

FREE

The Waterline News

Tooradin, Koo Wee Rup, Lang Lang, Nyora, Loch, Kernot, Grantville, Corinella, Coronet Bay, Bass, San Remo, Newhaven, Cowes, Phillip Island, French Island and Wonthaggi.

Available by email and at www.waterlinenews.com.au



Volume 3

8

April 2017

Grantville Pirate Festival

<https://www.marukoalapark.com.au/>

More family fun than you can poke a sword at...

SAT 22ND APRIL 10AM - 3PM

Grantville PIRATE FESTIVAL

Ice Age Live Stage Show!

Shows at 11am and 1pm

Meet characters Sid, Scrut & Diego at 12noon

ALL DAY PASS

Buccaneers & Weapons (Adults).....	\$30
Galley Slaves (Children 4-5).....	\$16
Old Bones (Aust. Seniors).....	\$20
Pirate Horde (2 Adults & 2 Children).....	\$80

At Pirate Pete's Mini-Golf Complex,
Maru Keala and Animal Park
1650 Bass Hwy Grantville
Ph: 5678 8548

"Dere be lots for young pirates to see and do!"

ALL ACTIVITIES ARE INCLUDED IN THE ONE TICKET PRICE!

- Ice Age Live Stage Show
- Kids rides and games
- Pirate Pete's mini-golf
- Entry to the animal park
- Roving Pirate Entertainers
- Giant slide and Jumping Castle
- Face Painting
- Old Time Pirate Games

10% off tickets purchased online from our website before the 16th April www.marukoalapark.com.au

Vinyl Layer

Expert laying of

Sheet Vinyl. Vinyl Tiles.

Vinyl Planks.

Laminate & Floating Timber Floors.

No job too small. Obligation free quotes.

Contact - I & S Meddings Flooring Contractors

0419 192 542



LANG LANG DISTRICT FUNERAL SERVICE

1 WESTERNPORT RD, LANG LANG

DIANNE COMBER - 0418 328 205

EMAIL: dianne@lldfs.com

'Compassion, Dignity & Respect with Quality Service'.

- * Personal Care - 24 hrs a day
- * Servicing all areas
- * Pre-paid & Pre-Arranged funeral plans available.

*'Let me be there to help you, in your time of need.
We've been there and we care.'*

*From the mountains to the sea
Alex Scott and staff providing*

CLASSIC REAL ESTATE SERVICE *Since 1886*



Madelyne Golby
Sales Agent
Debbie Golby
Rental Manager
Janine Milton
Office Manager

Gordon Waterson
Sales Agent
Jess Endres
Holiday Rentals
Robb Lawrie
O.I.E.C

CALL OUR TEAM NOW FOR A FREE MARKET APPRAISAL

5678 8433 OPEN 7 DAYS

A 1505 Bass Highway, Grantville W www.alexscott.com.au E sales@alexscottre.com.au

**ALEX SCOTT
AND STAFF**

AP
**PROGRESSIVE
PLUMBING**

**Servicing all
Westernport**

**Pensioner Discount
On maintenance jobs**

**Call Adam
0408 592 252**

**"ALL YOUR
PLUMBING SOLUTIONS"**

**Happenin Hair and
Beauty**

3/1509 Bass Highway
Grantville, Vic, 3984

03) 5678 8847



**ACCREDITED
MASTER
ELECTRICIAN**

**Clean Energy Council
MEMBER**

WHY CHOOSE US TO INSTALL YOUR SOLAR POWER?

- We are a local, family-owned and operated business, based in Lang Lang.
- We are fully qualified Master Electricians, working to the highest standards of the industry.
 - We have over eight years experience in the solar power industry.
- We have installed over 1000 systems across Victoria, ranging from small to over 100Kw.
 - We don't believe in cutting costs and use only high quality products for our systems.

Call Sam & Melanie Leighton on **03 5997 5998** to arrange a free quote,
or visit www.sunscapeelectrical.com.au to find out more!



3.0Kw System, The Gurdies



6.0Kw System, Inverloch RSL



4.5Kw System, Coronet Bay





NEWHAVEN COLLEGE PRESENTS

GUYS AND DOLLS

A MUSICAL FABLE OF BROADWAY
BASED ON A STORY AND CHARACTERS OF DAMON RUNYON
MUSIC AND LYRICS BY FRANK LOESSER
BOOK BY JO SWERLING AND ABE BURROWS

WONTHAGGI UNION COMMUNITY ARTS CENTRE
GRAHAM STREET, WONTHAGGI
ADULT - \$25
CONCESSION - \$20

FRIDAY MAY 5TH AT 7:30PM
SATURDAY MAY 6TH AT 1:30PM
SATURDAY MAY 6TH AT 7:30PM
SUNDAY MAY 7TH AT 1:30PM

TICKETS AVAILABLE AT
WWW.NEWHAVENCOL.VIC.EDU.AU

LICENSED EXCLUSIVELY BY MUSIC THEATRE INTERNATIONAL (AUSTRALASIA).
ALL PERFORMANCE MATERIALS SUPPLIED BY HAL LEONARD AUSTRALIA



JAMES McCONVILL & ASSOCIATES
BARRISTERS & SOLICITORS

Personal legal service
covering **Bass Coast** and **Phillip Island**

For an initial free consultation contact

Maka Atanasov

lawyer

Ph: 0423 323 659

We can visit your home, or another convenient location.

www.basscoastlawyers.com.au

The Waterline News - April

FROM THE EDITOR'S DESK

editor@waterlinenews.com.au



Welcome to the April edition of The Waterline News.

Packed from front to back cover with Community information, stories about our people, and happenings within the Waterline community area.

A number of items have been held over until next month because of our extended coverage of Anzac Day and some special features on some of "Our People", including a couple of sad farewells. Local Community Centre News from Bass, Corinella, Lang Lang, Wonthaggi and the Bass Valley U3A also feature, which gives all readers a look at what is happening and what activities are available to you. If there is something in particular you would like to see in The Waterline News, please get in touch, by email, or snail mail. Your comments, letters, ideas and contributions are always welcome. Have a happy & safe Easter and take care on the roads.

Roger Clark, Editor.

Distribution Area:

We distribute 1500 copies each month through Tooradin, Koo Wee Rup, Lang Lang, Nyora, Loch, Kernot, Grantville, Corinella, Coronet Bay, Bass, San Remo, Newhaven, Cowes and French Island. We also send out almost 500 copies by email and all editions right from the first edition are available on our website:

www.waterlinenews.com.au

www.waterlinenews.com.au

Disclaimer: All views expressed in The Waterline News are those of the author of each article, not the publisher.

INSIDE THIS MONTH

Section	Page	Section	Page
Advertisers index	34	Gardening & Outdoors	33
Anzac Day Services	23	Greg Hunt's news	31
Arts, Books & Writing	28-29	Health & Lifestyle	14-15
Bass Coast Post in print	21	History	24
Community Notes, Directory, News, and Community Centre updates	6-12	Markets, Op Shops and local Halls	9
Contact Details	5	Obituary	24 & 25
Entertainment & Lifestyle	16-17	On the Road - Places to go	26
Food	13	Our People	27 & 30
French Island News	18-20	Sports & Leisure	32
		Trivia, Philosophy & Quiz	22

THE WATERLINE NEWS
Editor & publisher Roger Clark
PO Box 184 Grantville 3984
Phone 0410 952 932

Office Hours Mon- Fri 8.30am - 4.30pm

Email: editor@waterlinenews.com.au

Website: www.waterlinenews.com.au

ABN 97 395 483 268



ADVERTISING RATES			
Small	6cm x 6cm	\$	20.00
Small 1.5 (Bus Card)	6cm x 9cm	\$	27.50
Double Small	6cm x 12cm	\$	37.50
1/4 Page	9cm x 14cm	\$	55.00
1/2 Page	18cm x 14cm	\$	85.00
Full Page	18cm x 28cm	\$	135.00

Colour ads + 100% - When available

Email: editor@waterlinenews.com.au

Advertising Deadline 1st each month

CORINELLA RATEPAYERS AND RESIDENTS ASSOCIATION



2017 Committee

President. Lyndell Parker.

Vice President. Peter Tait.

Secretary. David Laing.

Assistant Secretary. Wayne Maschette.

Treasurer. Michael Kelzke.

General Committee Members.

Brian Lloyd and Jackie Tait.

As we slide out of a late Indian summer into Autumn it is a good time to stop and take a breath, to reflect on the role and purposes of the CRRRA.....we aim to work with and for the community of Corinella, promoting effective, sensitive, and transparent communication on community issues, with integrity, through groups and individuals. Striving to be inclusive of all, regardless of age, interests or social standing. Enhancing social and cultural activities, promoting Corinella locally and in the wider community. Working on planning and implementation of a coordinated future for our community, liaising with Bass Coast Shire, State and Federal authorities on ongoing planning issues, working towards sustainable and sensitive development, and promoting awareness and protection of our fragile environment.

The word community carries a sense of belonging, a sense of togetherness, bonding together for the common good. The CRRRA provides a forum for community opinion, where we respect and value different view points, and aim to work constructively to achieve community objectives, and build community spirit focusing wherever possible on what's strong not what's

wrong, a message that is so important for our collective well being, moving forward into the future.

The special guest speaker for our June meeting will be Chris Wightman, strategic planner with Bass Coast Shire, a great opportunity to hear what the Shire has in the pipeline for our town and Shire's future growth, all are welcome to join us, you don't need to be a member, even though we are always keen to have new members it is an opportunity to all share our skills to make Corinella an even better place to live. We always finish our meetings with a "cuppa" and some homemade goodies, it is an opportunity to share fellowship and make new acquaintances and friends, especially if you are new to town, we really like to make you feel welcome !

Lyndell Parker.

Saturday April 22



Grantville

PIRATE FESTIVAL

Kernot Memorial Uniting Church 60th Birthday Celebration



Everyone is invited to attend the Kernot Memorial Uniting Church 60th Birthday Celebration Service, Kernot Memorial Uniting Church, 1040 Loch - Kernot Road, Kernot

Sunday 4 June 2017, commencing at 10 am and afterwards for refreshments at the Kernot Hall.

Please contact Hon Secretary Judy Hogan on 0422 094 903 for any queries.

The Waterline News would like to acknowledge the contribution of all volunteers who help make this community great.

Community Notes

CORONET BAY RATEPAYERS & RESIDENTS ASSOCIATION 2017 COMMITTEE



President: David Buckingham

Vice President: Kevin Brown

Secretary: Stephanie Hartridge

Treasurer: Sebastian Nowakowski

Committee Member: Mel Gration.

We are seeking one further committee member and welcome application from CBRRA members.

Please contact our Secretary, Stephanie Hartridge on 0414 370 929 or email shartrid@bigpond.net.au

All our ratepayers and residents are most welcome to join or renew their membership for just \$20 per family annually.

Please contact our Secretary.

We meet four times per year to review and keep everyone up to date with current issues and projects. Our next meeting is scheduled for 11 am on Saturday 29th April at the Coronet Bay Community Hall. We expect to have updates on control of horses on the beach and the potential re-opening of the old boat ramp. We have also arranged for a National Broadband Network (NBN) representative to attend and provide information and answers to all your questions about the imminent launch of an NBN internet service for our town. We are listening to your views and aim to work together to make Coronet Bay even more beautiful and a wonderful, safe place to live and play.

The Coronet Bay Combined Community Group organises our markets and fairs.

We have a double header at Easter, with a market at the Community Hall on Saturday 15 April and a family beach fair the following day at the Coronet Bay foreshore.

There is a need for more helpers on those days and for future events. These events are an integral part of the community life but are at risk of not happening in the future without more regular volunteers.

If you can assist please call the Secretary Combined Community Group, Sue Quartermain on 0408 290 923
Email: susiequa@tpg.com.au

April 15 Easter Market, Fred Gration Reserve.

Speak to Ann Reed for the opportunity to book a stall.

Prices from \$10 for 1 table.

Opens 8:00am

Ann's phone number is 5678 0341

April 16, Easter Fair, Coronet Bay Foreshore. **susiequa@tpg.com.au**



Coronet Bay Neighbourhood Watch

Contact: Ivan Bradshaw -

5678 0663 - 0414345754

Chairperson. Ivan Bradshaw.

Vice Chairperson Julie Cameron.

Secretary Pauline Hiscock.

Vice Secretary Ivan Bradshaw.

Social Media Manager Christine Slavin

Treasurer Joyce Cotter.

Vice Treasurer Tracey Farr.

Area Supervisor Levinus Van Der Nuet

Fund Raising Bianca Peters.

Due to incoming correspondence as well as reduced crime in recent months committee has also been able to purchase signs for letter boxes/fences to create further awareness of Neighbourhood Watch.

Other numbers you might like to put into your phone.

San Remo police 56785500

Wonthaggi police 56714100

Hoon hotline/crime stoppers 1800333000

GRANTVILLE AND DISTRICT RATEPAYERS & RESIDENTS ASSOCIATION

2016 -17 Committee

President: Roger Clark

Vice President: Darrell Egan

Secretary:

Treasurer: Sylvia Harris

General Committee Members:

Vicki Clark, Kat Cox, Neil Daly.

Membership Fees: \$10 single - \$20 family
Payable to Sylvia Harris at the Post Office/Newsagency.

GDRRA is still looking for a Secretary to join the Committee for 2017 so if you are able to help, please contact us now.

After the election of the 2017 Committee, the incoming President paid tribute to the service put in by the previous Committee members, in particular, Helen Zervopolous and Kathy Hopkins, who decided not to stand again after 12 years service.

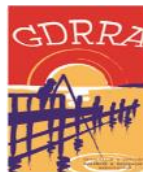
Treasurer Sylvia Harris has also been on board for 12 years and she has decided to continue in the role.

GDRRA needs your support, and we will be running a special feature in the next edition of The Waterline News.

If you wish show your support and join us please see Sylvia at the Post Office.

If you are interested in the position of Secretary, or know someone who might be able to help us out, please let us know.

Email: gdrasecretary@gmail.com



PIONEER BAY PROGRESS ASSOCIATION



Contact

Zena Benbow

pbpa@bigpond.com

We look forward to holding a community BBQ in the very near future to get your votes on the Community Space (aka Toilet block, meeting & storage facility)... so once that's decided we can get on finding money to get it built!

This newsletter also finds us two weeks after the last road's workshop- let's NOT let this opportunity pass and get the roads finally done! The bottom of the list is really not a great position to find ourselves in... so we once again encourage those who think they'd struggle with a special charge scheme to speak to Council NOW and work out a payment plan which gives you a bit more breathing space. It's already been indicated that for a \$15,000 average investment that a \$25,000 increase at sale time is possible... let's REALLY think about this in a positive light.

Finally we extend invitation to interested parties who wish to participate in this vibrant community through the meetings- Fourth Tuesday of every month September to April, then bi-monthly over Winter, 7.30pm, 58 Sonia Crescent. See you there.



President: Jean Coffey

0419 500 593

Secretary: David Pearce

0401 514 339

All Tenby Point residents are very welcome. Membership is just \$10 per household per year.

EXPRESSIONS OF INTEREST

**CORINELLA CARAVAN PARK
MANAGER**

JOB REQUIRES

- **GOOD COMMUNICATION SKILLS**
- **THE NEED TO LIVE LOCALLY**
- **NATIONAL POLICE CHECK AND CURRENT DRIVING LICENCE.**
- **SUIT SEMI- RETIRED PERSON/ COUPLE**
- **APPROX. 25 HRS PER WEEK WEEKEND WORK**

**FOR MORE INFO CONTACT
SECRETARY
corinellaforeshore@gmail.com**

Community Notes

Grantville & District Foreshore Committee of Management

Chairman: Eric Hornsby.
Treasurer: Roger Hayhurst.
Secretary: Barbara Coles
General Committee Members:
 Dr. David Bourne, Ian James, and
 Dr. Eric (Tim) Ealey.
Contact: Barbara Coles
bacoles@bigpond.net.au
<http://www.gadfc.com.au/>



Mangrove re-establishment at Grantville

In January, the Department of Environment, Land, Water and Planning (DELWP), sought community input for the Draft Mangrove Re-establishment Plan for the Grantville coastline.

DELWP has partnered with the Grantville Foreshore Committee of Management, Bass Coast Shire Council, Parks Victoria, and the Western Port Seagrass Partnership to develop the plan to re-establish mangroves in coastal Crown land at Grantville. Mangroves were previously present in the Grantville area but were harvested out until the 1960s.

Mangroves and tidal saltmarshes are amongst the most endangered marine wetland habitats worldwide. Efforts to halt the decline are critical for the health of the Western Port marine environment, which is a Ramsar-listed wetland of international significance.

The efforts to re-establish mangroves will be done in such a way as to still allow continued access to the waters of Western Port.

During the consultation many community members expressed their support for re-establishing the mangroves as the preferred natural and self-sustaining method of coastal stabilisation.

There were also some enquiries into the possibility of engineered structures to protect the foreshore. While this is not the preferred option to mitigate erosion of the foreshore, DELWP would like to have a conversation with the community to discuss their concerns.

A coastal processes study and an analysis of management options has been done, however DELWP acknowledge that the results need to be discussed with the community to find a way forward.

DELWP is now looking to run an open

house forum to hear from interested community members. This open house is being planned for 10 am – 12 pm Saturday May 6, and will be held at the Grantville Hall. For more information please contact Peter Merritt, telephone 9210 9363.

LOCAL POLICE NETWORK

**Bruce Kent Station
Commander,
San Remo Police
Eastern Region
Division 5 Victoria
Police**



**phone: 5678 5500
fax: 56785766
mobile: 0411 837 467
email: bruce.kent@police.vic.gov.au**
 Unfortunately Bass Coast recently witnessed another fatal incident on the Island.

This involved a single vehicle where the single occupant is deceased. Driver behaviour does have its consequences and I asked our residents to be mindful of their own behaviour but to also be vigilant to impatient holiday travellers who maybe also suffering from fatigue.

It doesn't take much to move into the left lane and let these travellers through.



**Emergency Dial 000
www.police.vic.gov.au**



News from The Probuc Club of Corinella and District Inc

We meet on the first Wednesday of each month (except January) at the Bass Hotel, Bass 10am start. Guest Speakers and fun times, promoting fellowship and friendship. Morning tea supplied and You can purchase lunch after the meeting if required. All visitors are welcome to attend our Club Meetings. For further Information please contact Heather Reid on 0421012519 or Rob Parsons on 0402852300.

March 2017

Wednesday 1st Club Meeting and lunch at George Bass Hotel 10am
 Wednesday 8th Lunch Royal Hotel in Koo Wee Rup 12pm
 Wednesday 15th Ten Pin Bowling at Cowes 11am Cowes.
 Wednesday 22nd Movie & Lunch. Movie before or after lunch at 12pm RSL Leongatha.

April 2017

Wednesday 5th Club Meeting and lunch at George Bass Hotel 10am
 Thursday 13th Lunch at RSL Cranbourne 12pm
 Wednesday 19th Ten Pin Bowling at Cowes 11am Cowes.
 Wednesday 26th Movie & Lunch. Movie before or after lunch at 12pm RSL Leongatha.

All other outings arranged by the Club To Be Advised.

South Gippsland Support After Suicide

**Have you been
bereaved by suicide?**
 Come for morning tea and a chat

South Gippsland Support After Suicide is a new initiative offering peer support for those bereaved by suicide.

We meet monthly on the fourth Thursday at the
Grantville Transaction Centre
 Corner Bass Highway and Pier Road, Grantville

from 10am-12pm
 Dates for 2017

23 Feb	27 July
23 March	24 August
27 April	28 September
25 May	26 October
22 June	23 November



These meetings are hosted by trained volunteers who have themselves been bereaved by the suicide of a loved one.

For further details or to RSVP

email southgippslandsas@gmail.com OR phone 03 9421 7640



ACCESS the BARS®

- Tired? • Stressed? • Brain Fog?
- Stressed/Strained Relationships?
- Cranky Kids? • Sleep Deprived?
- 24/7 Mind Chatter?

Tried everything? **Nothing** seems to help with your **Stress, Anxiety, Depression, OR** anything else you may be **suffering** with / from?

Are you seeking change? Then come and experience a **highly energetic Access Bars® session?** At the very least you will feel more **relaxed, lighter** AND have a **clearer headspace.**

SUITABLE FOR EVERYONE!

EVEN MEN & KIDS! CURIOUS!?

What are you waiting for? **Call Ann (Certified Bars Facilitator)**

0417 594 997 for All Bookings or Info; @Longwarry

South Gippsland Arthritis Support Group



Coffee & Chat 1st Monday of Month
 6-8pm, Leongatha RSL &
 1st Tuesday of Month 2-4pm,

Korumburra Indoor Recreation Centre
 Cost: Gold Coin Donation. For more information please contact:

Adam: 0408353785 phomdin2@bigpond.com

Marg: 0417 154 057

Diane: 5658 1443

South Gippsland Mental Illness Carer's Group

If you would like to join the group or get more information:

Phone now -

Maggie 5658 1781

Rosemary 5662 4352



Send us your Community Group
Notices by 1st each month
editor@waterlinenews.com.au

Community Directory

Artists' Society of Phillip Island

56-58 Church Street Cowes

For more information <http://aspi-inc.org.au/>

Australian Red Cross

Woodleigh Vale Branch

Members meet in each other's homes on
2nd Thursday of Feb, Apr, Jun, Aug & Oct.

Contact Sheila Campbell 5678 8210

Bass Coast Community Baptist Church

Minister - Barry MacDonald 5995 3904

OP SHOP open Mon-Saturday

Contact the Op Shop for details 5678 8625

Bass Coast L2P Learner Driver Mentor Program

Wonthaggi - Corinella

The Bass Coast L2P Program now has a car at Corinella & District Community Centre.
For further information contact:

Veronica Dowman 5672 3731 0467590679

Bass Coast Strollers

Catering for all adults participating in walks around the Bass Coast region of Victoria.

Contact Liz Hart 5678 0346

Website: <http://basscoaststrollers.org/>

Bass Friends of the RSL

Secretary Sue Kinniff 0418 588 596

Bass Valley Landcare

2-4 Bass School Rd, Bass 5678 2335

Bass Valley Lions Club Op Shop

Situated at the Grantville Garden Supplies

Open Monday-Saturday 5678 8357

Corinella & District Probus Club

1st Wednesday each month except January

Bass Hotel 10am start, Morning tea supplied. Can purchase Lunch after meeting.

Heather Reid 0421 012 519

Corinella Bowling Club Inc.

Balcombe Street Corinella.

Jacquie Carter 5678 0596

Corinella & District Community Centre

48 Smythe St Corinella. 5678 0777

Mon - Fri 10am - 4pm Keep up to date:

Facebook @corinellacommunitycentre

www.corinellacommunitycentre.org.au

Corinella & District Men's Shed & Woodies Group

Corinella Road

Visitors and new members welcome.

Contact: Ken Thomas 0427 889 191

Corinella Foreshore Committee

Contact Barbara Oates 0427 780 245

Coronet Bay, & Surrounds Playgroup (0-4yrs)

Coronet Bay Hall

Mondays 10am—12noon

(Please bring \$2 per family and a piece of fruit. (\$5 Annual Membership per family), ALL children are to be accompanied by their parent or carer. Tea and coffee provided, Indoor and outdoor play

Contacts: Becky 0439 638 854
Ann 5678 0341

Coronet Bay Adult Social Club

Tuesday 7-10pm Coronet Bay Hall

Ann 5678 0341

Country Women's Association of Vic inc. Bass Group.

Coronet Bay Margot 0409 559 047

Cowes Lorraine 5952 2165

Glen Alvie Libby 5678 3280

Grantville Annie 5678 8037

Loch Val 5659 4268

Woodleigh Vale Carol 5678 8041

Grantville & District Ambulance

Auxiliary

Contact - Shelly 0417 593 497

Grantville & District Business & Tourism Association

President Neroli Heffer 5678 8548

Grantville & District Ratepayers & Residents Association

Secretary Kathleen Hopkins 5678 8327

Grantville & District Foreshore

Committee

Roger Hayhurst 0416 061 400

Grantville Recreation Reserve Committee

Pat Van 5997 6221

Grantville Tennis Club Inc.

Contact Pat Van 5997 6221

Kernot Uniting Church

1040 Loch-Kernot Road, Kernot

Local services throughout the year

Contact Secretary Judy Hogan 0422 094 903

Lang Lang Community Centre

Coordinators Marg and Michelle

Phone 5997 5704

Email: llcc@langlang.net

Lang Lang Playgroup

(0-Preschool) Thursdays 9.30am

Lang Lang Community Centre \$2 per child

Contact Crystal 0473 077 125

Phillip Island Community Art & Craft Gallery Inc.

Cowes Cultural Centre Thompson Ave

Open every day 10am—4pm

All Enquiries Call Aleta 0419 525 609

Phillip Island Indoor Carpet Bowlers

Come and join the fun

Friday 2 - 4.30pm, Saturday 1 - 4.30pm

Phillip Island Celebration Centre 6 Lions

Court, Cowes Contact Jack 0434 944 380

Phillip Island & District Railway Modellers Inc.

The Phillip Island & District Railway Modellers Inc. meet every Sunday from

1.30pm to 5pm. At the Phillip Island Celebration Centre, 6 Lions Court Cowes.

Contact Peter 5956 9513

Phillip Island Patchworkers

Meet on a Monday night from 7.30 at the Newhaven Hall (except public holidays), the first Tuesday of the month at the Newhaven Information Centre meeting room 10.30 and the last Tuesday of the month at the Cultural Centre in Cowes at 10.30. Cost to attend is \$2. To join the club is \$20 annually with a \$6 one off joining fee. For more information contact Debbie on 59521530 or at phillipislandpatchworkers@gmail.com

Phillip Island Senior Citizens Club

Phone bookings 5952 2973

Email piscc123@gmail.com

Phillip Island Squares

Square Dancing, Bass Valley Community Hall, Bass School Rd, Bass 7.30 - 10.00pm Thursday nights

Contact: Carol 5952 5875

Pioneer Bay Progress Association

Zena Benbow pbpa@bigpond.com

Survivors of Suicide

Raising awareness to aid prevention

Jillian Drew 0413 056 165

St Pauls Anglican Church Bass

HC at 12.30pm every Sunday followed by a shared lunch

Rev Greg Magee 5952 2608

St Georges Anglican Church Corinella

1st Sunday each month 11.00am

Other Sundays 9am

Free Community Lunch Corinella

Community Centre Second Friday

Op Shop open Mon, Thur, Fri 10am - 2pm

Saturday 9am- 12.30pm

Tenby Point Residents Association

President Jean Coffey 0419 500 593

Secretary David Pearce 0401 514 339

The Probus Club of San Remo

Second Monday of the month (except January) 10am at the Newhaven Public Hall. Visitors Welcome.

Enquiries: Neil Stewart 5956 6581

Around the Markets & Op Shops

U3A Bass Valley



Courses offered:

Book Club, Bush Painting, Creative Writing, Gardening, Get Creative, Movies & Theatre Appreciation, Tai Chi for Arthritis and Welding.
www.u3abassvalley.com

Heather White 5997 6323
(PO Box 142 Grantville 3984)

U3A TAI CHI

Why not give the U3A Tai Chi for Arthritis a try? Coronet Bay Hall 9.30am Tuesday
Gentle exercise, good company and a cuppa.

Further information:

Laura 5678 0884
Vicki 5678 8734



MARKETS

Every Sunday

Kongwak Market

10am - 3pm

Retro stalls, food, vegetables, coffee, curries
30+ stalls

Enquiries: Jane 0408 619 182



1st Saturday

Archies Creek Indoor Market

Community Hall

Enquiries: info@archiescreek.com

2nd Saturday

Coal Creek Farmers' Market

Coal Creek Community Park 8am - 12.30pm

50+ stalls

coalcreekfm@hotmail.com

Contact for information 0459 629 000

Cowes Island Craft Market

102 Thompson Avenue, 9am - 2pm

In the grounds of St Phillips Church
60+ stalls Make, bake and grown goods and produce.

Contact for further details 0412 710 276

4th Saturday

Churchill Island Farmers' Market

40+ stalls. 8am - 1pm

peter@rfm.net.au

Further Information 0439 364 760

Cowes Market on Chapel

Chapel Street. 8.30am - 2pm, 30+ stalls

Further information-contact 0428 603 043

1st Sunday

Jumbunna Bush Market

Jumbunna Hall

Further information, phone 5657 3253

2nd Sunday

Koowe Community Market

Cochrane Park, Rossiter Rd 8am - 1.30pm

Indoor/outdoor Phone 0418 289 847

Email: info@kooweemarket.com.au

Rotary Club Market Wonthaggi

Apex Park 8am - 1pm, 50+ stalls

Walk to nearby Make it - Bake it Market

Contact: Neville Goodwin 5672 7245

Garry Sherrick 5672 5812

Loch Lions Village Market

May - Sept Loch Public Hall

Oct - April Loch Railway Station Park

70 + stalls

Information from Noel Gregg 5627 5576

Market day phone 0418 500 520

3rd Sunday

Inverloch Farmers Market

The Glade, Esplanade, 8am - 1pm

50+ stalls

Information: peter@rfm.net.au

Phone 0439 364 760

Tooradin Sunday Market

9am - 1pm

Stallholders wanted, \$20 includes 1 sausage & bread breakfast per stall.

All Market Enquiries: 0429 188 280

4th Sunday (Weather Permitting)

Grantville Variety Market

Grantville Recreation Reserve

Bass Highway, Ample parking.

Weather permitting, Except December which is the third Sunday.

8am-2pm 100+ stalls

BBQ & Sausage sizzle, Coffee Cart, indoor and outdoor, cake stalls plus plenty of home made goodies.

Contact for further details 5997 6221

Last Sunday of each month

Inverloch Community Farmers' Market

The Glade, Esplanade, 50+ stalls

Fresh produce grown and made in Gippsland.

Email:

info@inverlochfarmersmarket.com.au

Phone 0417 370 488

2nd Friday and Saturday each month

San Remo Cuppa and Chat Market

St. Augustine's Church

Marine Parade San Remo

Hosts a Cuppa and Chat Market every month on a Friday and Saturday.

Friday 9am - 1pm

Saturday 9am - 12noon

10+ stalls

Bric a brac, cakes, & jams Friday, plus a sausage sizzle on Saturdays.

Further Information: 5678 5386

OP SHOPS

Bass

Bass Valley Community Group

Hadden House Op Shop

Next to Bass Hall, Bass School Road

Monday to Friday 9am - 3pm

Saturday 10am - 2pm

Phone Enquiries 5678 2277

Corinella

St George's Anglican Church Op Shop

Smythe Street Corinella, next to Church

Monday, Wednesday, Thursday, Friday

10am - 2.00pm

Saturday 9.30am - 12.30pm

Grantville

Bass Coast Community Baptist Church

Op Shop

Bass Highway, Grantville

Open Monday - Friday 10am - 3pm

Saturday 10am - 1.30pm

Phone 5678 8625

Lang Lang

Lang Lang Community Op Shop

12 Westernport Road

Monday - Friday 10am - 3pm

Saturday 10am - 1pm

Nyora

Nyora Op Shop at the Nyora Station

Open Monday - Saturday 9am - 1pm.

Enquiries to Sylvia, Phone 5659 0089

San Remo

Bass Coast Community Health Op Shop

Back Beach Road.

Opening times and all enquiries to Bass

Coast Health on 5671 9200 or Email:

info@basscoasthealth.org.au

Community Halls for

Hire

Archies Creek

Mez Oldham

0415 445 215

Bass Valley

5678 2277

Corinella Paula Clarke 0418 441 046

Coronet Bay Peter Thick 0429 851 004

Dalyston Dorothy Slade 5678 7334

Grantville Pat Van 5997 6221

Kernot Julie Johnston 5678 8555

Kongwak Betty Anderson 5657 4317

Loch Grieg Barry 0419 358 628

Kilcunda Marion 0404 135 434

Nyora Robyn 5659 0098

Newhaven Noel Street, 5956 6122

Rhyll Ring General Store, 5956 9205

Woodleigh Evan Jones 5657 7275



More Community News



Mitchell House wishes you a safe and happy Easter.

Who are we?

Wonthaggi Neighbourhood Centre incorporating Mitchell House and the Harvest Centre is run by a community based Committee of Management. We aim to provide a positive, welcoming environment where you can meet new friends, learn or share skills, ideas and information. If you're interested in being more involved in your Neighbourhood Centre call in and have a chat to the Coordinator Jan Bourne.

News from Wonthaggi Neighbourhood Centre (Mitchell House) To call: 5672 3731

We have enjoyed your interest and enthusiasm over term 1 and we are looking forward to your participation in term 2. We will be continuing with our regular courses and special activities. Of particular interest is the week of activities celebrating Mitchell House's involvement with the community. This will be happening 8th - 14th of May.

Some of our regular and one off events with dates are:

Traditional Sampler Quilts on Mondays 9.30 - 12.30pm. Have a go on 17th & 24th April. Please book.

Carers Support Group on the 3rd Tuesday of the month, our next one is 18 April. 10.30am - 1.00pm.

It provides an opportunity for carers to meet for social contact and support.

Meditation on Tuesdays at 12.30 - 1.15pm. Try it on 18th April. Learning to relax and meditate just requires gentle practise.

Dru Yoga will be returning on Tuesdays 7.00 - 8.00pm. Come along on 18th April. It is a graceful and potent form of yoga, it works on body, mind and spirit to rejuvenate your whole being.

Harvest Garden Activities. The Garden Group meet on Wednesdays 10.00am - 12.00noon. Come along on 19th April. There is also the Seed & Veggie /Produce Swap on every 2nd Saturday 9.30 - 11.30am.

Boomerang Bags (cotton) on Thursdays 7.00 - 8.00pm. Have a go on 20th and 27th April. Make bags out of recycled material and help save the environment. Donations of good doona covers and sheets are very welcome.

Sing For Fun on 2nd and last Wednesdays of the month. Come along on 26th April and 10th May. It can provide many health benefits, can lighten our mood and assist with stress-relief. Call Jacqui for details: 0432 934 681.

Chronic Pain Support will be on again this term on a Thursday at 1.00pm. The date is yet to be decided.

Chronic pain can be isolating, meet with others to share and have social support. Call to register.

Community Councillor Catch Ups is on the last Friday of the month. Our next one is 28th April 1.00 - 3.00pm. Come and chat with councillors from Bunurong and Westernport Wards.

Courses to return but dates to be decided. Call Mitchell house to confirm.

Learn Leather Carving on Thursdays 10.30 - 12noon. Learn the art of leather carving.

Make a belt, purse, bag. Be creative!

Look out for:

Your Asthma in your Hands Learn simple techniques and pressure points to help open your lung and breathing capacity.

Tai Chi for beginners is on Thursdays 10.30 - 11.30am. Learn gentle Tai Chi steps which will improve muscle and joint strength, balance, co-ordination and enhance mental health.

Tai Chi for Arthritis on Tuesdays 1.30 - 2.15pm. Medical studies confirm that Tai Chi may relieve arthritis pain, reduce falls and improve quality of life. Why not give it a go?

The Craft and Cuppa group meet every Friday 10.00am - 12noon.

Bring along your craftwork or ideas or both!

The Evening Crochet group will be doing another course this term.

The Toy Library, now revitalised, opens from 10.00 - 2.00pm Tuesday to Thursday. Become a member and variety will be the spice of play life for your child!

There are many other courses and events available, find out by visiting our Facebook page on Mitchell House Wonthaggi Neighbourhood Centre and keep up to date with what's going on or just pop in and have a cuppa and a chat, everyone welcome.



Bass Valley Computers (Grantville) has closed down and moved to Wonthaggi. If any of my old customers need help they can ring me on 0438 788 363

Ed Allison



FRENCHVIEW CARAVAN PARK GRANTVILLE

Gateway to Phillip Island

French View Caravan Park in Grantville is now owned by Islevue Communities P/L. French View is now predominantly an affordable retirement option for over 55's. It is to be developed over time as a Lifestyle Village, which also provides for annual holiday home sites and some very limited short stay motel units.

They currently have two new homes on order and for sale, a one bedroom and a two bedroom, with more to follow as the lifestyle needs of the over 55's grows and the village develops.

The new owners have some wonderful short, medium and long term plans for the village which will see lots of changes and improvements over time. The Directors are Sydney based and very switched on to the needs of the aging population. They also spend a regular amount of time visiting on site at Grantville and liaising with the managers of the village.

Currently the village has two BBQ areas, an in ground salt water pool, an amenities block, including a Baby Bathroom and a laundry. The village is pet friendly (subject to approval) and is on the Westernport Bay Foreshore within close proximity to many facilities and beautiful areas.

They have everything required for the enjoyment and convenience of easy retirement living and there will be more to come as plans develop.

The new managers in the village, Trish and David are available on site and for any enquiries you can contact Trish by phone on (03) 5678 8282 or email:

fvmanager@islevuecommunities.com.au

To make a time to drop in for a chat and discuss your options.

They look forward to working with the local community and to settling in to the beautiful area of Grantville and surrounds.

The new development will certainly be a great asset to the community.

Editor

The Waterline News

makes space available to all community groups in our distribution area and nearby for letting the community know about their activities and events.

Send us your details

Deadline - 1st of each month.

Distribute 3rd Thursday of each month

To ensure your message gets out there, make sure you get in before the deadline.



News from the Community Centres

BASS VALLEY COMMUNITY GROUP Inc.

Bass School Road, Bass
Centre Manager:
Roderick McIvor
Phone 5678 2277



The Bass Valley Community Group's Autumn Festival went well. The weather on the first Saturday of March was glorious. Attendance numbers did seem to be a little down at times compared with last year, but those who were there definitely enjoyed themselves. A team of smaller children got enormous excitement from riding the mechanical bull, an addition to the usual rides. Invariably they came off it but were eager to clamber back for another go. The organising committee is now taking a well-earned rest. But once they have a bit of a break, they'll be feverishly planning for a bigger and better event next year.

I mentioned Paul's Table last month. This is a wonderful new project at the Bass Hall that has been launched by Ross and Tracey Denby. Paul's Table is a community café. After publicising the advent of the café through its own Facebook page www.facebook.com/paulstablecafe and with cards and information brochures at the Autumn Festival, it had its first opening on Sunday 12th March. Since then the café has been open in the Bass Hall each Sunday and Wednesday from 10am to 2pm. In addition it features Sunday breakfast from 8:30am.

Paul's Table has been a great success already and has plans to get better and better. Ross and Tracey have invested significant time and resources into establishing the café. Speaking with a number of those who have visited the café, they have said how good the coffee and food is. But more importantly they have said that they have met and got to know people from their community they otherwise would not have...to the benefit of everyone. It has definitely added to the environment of the Bass Valley Community Centre with the possibility of getting a good cup of coffee without having to even cross the road!

VOLUNTEERS...VOLUNTEERS...VOLUNTEERS.

The second week of May is National Volunteers Week. But the reliance of the Bass Valley Community Group on volunteers is every minute of every day, not just one week in the year. Having adequate numbers of volunteers to keep our operations in support of the community (particularly the older members of it) is very much an ebb and flow proposition. Every time we think we have just the number of helping hands we need, someone finds that something in their life changes and we lose a vital helper. The most extreme case is probably the recent relocation of two of our key volunteers who, out of the blue went off to live at Mt Isa.

We rely on volunteers and are always looking for new ones, in particular to support us through work at the Hadden House Opportunity Shop. So if you might have a day a week where you are at a loose end, please give us a ring on 5678 2277.



Corinella & District Community Centre

Spread your wings and fly with us



We are your local Neighbourhood House and Adult Community Education Centre. Term 2 is here, drop by and pick up a program to see what's on. Come and join our new mosaic class, computer basics class, exercise classes, art groups and much more...

Calling all artists, we are revamping the Foyer Wall and providing a gallery space for rental on a monthly basis. The months are filling fast, call for further details and costings. Don't forget we have our 9 seater bus for hire at a great rate and the free food pantry that's available for those having difficulty putting food on the table. Call in for further info or like us on Facebook - @corinellacommunitycentre.

See you soon, Iain Ritchie
48 Smythe St Corinella 5678 0777
Mon-Fri 10-4.00

Phillip Island Community and Learning Centre



56-58 Church St, Cowes
Centre Manager - Linda Morrison
5952 1131
Email : manager@pical.org.au
www.pical.org.au

LANG LANG COMMUNITY CENTRE



Public Internet Access to all members.
iPad Tuition
Lifestyle classes including: Yoga, Pilates, Cardio, Walking group and Line Dancing, Tai Chi.
Playgroup and Hey Dee Ho for the littlies.
A variety of Patchwork groups.
Men's Shed Group.
Secretarial Support Services including: Photocopying, typing and scanning.
Book Exchange
Small offices for hire
Centrelink Agent with dedicated computer.
Medicare Claim Service

Forthcoming events:

Our main project is our Art Trail which is designed to showcase the Lang Lang township and local artists, to enter you must live within a 20 km radius of Lang Lang.

The Trail will open on May 5th and close on May 21st.

Details are on the Lang Lang Art Trail Facebook page.

*Origami flowers on Thursday June 8th 2-4 pm, cost \$5.00, bookings essential, sample on display in our office.

*Australia's Biggest Morning Tea- our annual event which is actually held in the afternoon Thursday May 25th at 2pm. A get together where we play some games and enjoy each others company while fundraising for this great cause. Bring a plate to share and gold coin donation.

For further details on all events

Please call us, we open @ 9.30am five days a week.

7 Westernport Rd, Lang Lang 3984

Contact Coordinators

Michelle or Marg

(03) 5997 5704

llcc@langlang.net

0473 077 125



Community



**CFA NEWS
With
Michele
Fulwell**

HAPPY EASTER!

The Easter school holidays has been a time to reflect on campfire safety. Even now many areas, including Bass Coast Shire, are dry and remain in the Declared Fire Danger Period so please check the CFA, BOM and local shire website to ensure lighting any campfire is appropriate before you do so. If you do have campfire always ensure it has been put out properly before leaving. All campfires should be put out with water. If the embers are cool enough to touch the fire is safe. Never use soil to put out a fire. The soil will actually retain the heat allowing the fire to smoulder and stay hot for hours. Substantial fines can be applied to anyone leaving a campfire unattended. With the end of daylight savings everyone should have changed their smoke alarm batteries. Smoke alarms should be tested every month and batteries changed at least once a year. CFA recommends changing your batteries when you put your clock back.

Also important at this time of year is getting your heating sorted ready for winter. If you have a wood heater get a chimney sweep in to ensure the flue is clear and the firebox safe. If you have gas or electric heaters make sure they are operating correctly and call in an appropriate trade's person if you have any concerns. Please note an interim ban applies to devices designed for domestic use producing a flame using alcohol as fuel, mainly for decorative purpose. The ban applies to all tabletop devices and to certain freestanding devices that do not have specified safety features and warnings. For more information on the ethanol heater ban visit www.consumer.vic.gov.au.

All fire brigades in the Bass Coast are volunteer brigades and welcome enquiries from community members wishing to join us. Being a part of your local brigade is a fantastic way to be involved in your local community. All training and protective equipment is supplied. Roles are available as fire-fighters and in support capacities for women and men aged from 16 years up. As I write this preparations are in full swing for our Grantville Adventure Expo and a full report will follow next month.

And finally please look out for Corinella Fire Brigade collecting for the Royal Children's Hospital this Easter!!

Michele Fulwell

Bass Valley Combined Churches Easter Services.



Good Friday

9.30am Stations of the Cross
St Joseph's Catholic Church
Bass

Contact Michael Powers
Email: powerfarmbass@hotmail.com

10.30am Re-enactment of the Passion
and Holy Communion at
St Paul's Anglican Church Bass

Easter Sunday

Easter Sunday dawn service 6.30am, April
16. Corinella foreshore, near the rotunda.

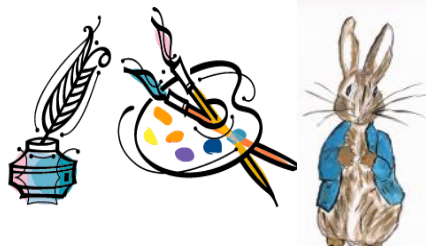
Hot cross buns after the service at St
George's Anglican Church.

Contact Rev Colin Oakley
Email: colinoakleyrevd@gmail.com
All Welcome
Enquiries 0411 393 009

Bass Coast Community Baptist Church
Minister - Barry MacDonald 5995 3904

For information on all other local Church services over Easter

Contact
Sandy Ridge
5997 6127
Email:
sandyr1903@gmail.com



Artists' Society of Phillip Island Easter Exhibition

Cowes Cultural Centre, Thompson Ave,
Cowes

Official Opening & Award Presentation:
Thursday 13th April, 7.30pm.

Opening Hours:

Friday 14th - Sunday

16th April, 10am-5pm

Monday 17th April, 10am--2pm.

Contact:

Warren, 0420789531

Kooweerup Regional Health Service

235 Rossiter Road, Koo Wee Rup
ph: 03 5997 9679
email: gregorys@krhs.net.au

website: www.kooweeruphospital.net.au



Koo Wee Rup's very own Youth Centre.

Local youth frequently find it difficult to know how or where to get help for their health and wellbeing, "One in five school age children will struggle in some way during their school life" said Brian Harlow the Hub Youth Centre Co-ordinator. "But 70% of them won't know how to seek assistance, we're here to fill that gap." Fortunately Wednesday the February saw the official opening of Koo Wee Rup's own Youth Centre-The Hub. KRHS CEO Frank Megens and staff welcomed community members, local Cardinia Councillors, local youth and other supporters to the opening.

Friday the March 3 the Federal Member for Flinders and Minister for Health and Sport Greg Hunt visited the Koo Wee Rup Men's Shed and The Hub. Greg Hunt discussed how important good mental health is for wellbeing and the installation of Solar Panels on the shed under the Solar Communities Program. These solar panels will greatly reduce the cost of power to the Men's shed.

KRHS is a 72 bed Public Hospital. We provide a range of community and centre based services: Acute Care, Early Parenting, Transitional Care, Respite and Residential Aged Care, Community Health, District Nurses, Pathology and Allied Health e.g: Physiotherapy, Social work and Occupational Therapy. There is also Specialist Medical Services: Podiatry, Cardiology and a Diabetes Clinic. KRHS is a member of the International Health Promoting Hospitals Network and Global Green and Healthy Hospitals.



Kooweerup
REGIONAL HEALTH SERVICE

Food

Three-bean stew



As soon as autumn arrives and the weather cools down, I start making this all the time. It's a warming, hearty dish that tastes lovely served on a hot bed of brown rice or quinoa with a big dollop of Mango Salsa on top. I love the mix of black, butter and cannellini beans; they create such a fantastic mix of textures that satisfies me every time. This is very freezable, so you can make a larger quantity and keep the rest to enjoy as a healthy ready meal for when you're busy. I never used to eat much onion, as it didn't agree with me, but I've been slowly reintroducing it to my diet... which is why you're now seeing more of it, too. If you're not an onion person, feel free to leave it out. Serves: Six

Ingredients:

Large jug of olive oil
2 celery sticks, finely chopped
1 medium onion, finely chopped (optional)
Salt and pepper
4 garlic cloves, finely chopped
2 red chillies, deseeded and finely chopped
400g can of chopped tomatoes
4 tablespoons tomato purée
2 red peppers, finely chopped
400g can each of butter beans, black beans and cannellini beans, drained and rinsed
Large handful of fresh coriander

Method:

Heat the oil in a large saucepan over a medium heat.
Add the celery and onion (if using) with lots of salt and pepper, then stir.
Cook until the celery is turning translucent, then add the garlic and chillies and cook for a minute, stirring so that nothing catches.
Add the canned tomatoes, tomato purée, red peppers and 350ml of water and let it bubble for about 30 minutes, stirring to break down the tomatoes now and then, until the sauce is starting to reduce and the peppers are soft.
Once you're ready to eat, add the beans. They'll need about 10 minutes.
When they've had that, turn the heat off and let cool slightly.
Serve in bowls topped with a sprinkling of coriander.

This recipe was taken from Deliciously Ella with Friends by Ella Mills, published by Hachette Australia on 31 January 2017 RRP \$29.99.



OVER60SIXTY

Coconut and mango panna cotta



This is one of the easiest dessert recipes and it takes no more time to multiply the recipe to feed a large party. Any seasonal fruits can be used. In winter, when mangoes are out of season, use strawberries. A shot or two of Malibu, Cointreau or other liquor is also a decadent addition to the fruit salad.

Serves: 6

Ingredients: Panna cotta

50 ml water
100 g sugar
1 ½ gelatine leaves titanium strength or 3 ½ leaves gold strength
100 ml coconut cream
200 ml mango puree
200 ml pure cream

Salad

2 mangoes, peeled and cut into 2 cm dice-sized pieces
3 passionfruit
1 tablespoon caster sugar

Method:

Bring the water and sugar to the boil then remove from heat.
Soften the gelatin sheets in cold tap water then squeeze out excess water before stirring

into the warm sugar syrup. Cool to room temperature.
Place the sugar syrup and coconut cream in a large bowl and mix together. Stir through the mango puree.
Whip the cream to soft peaks and carefully fold through the mango mix.
Divide the panna cotta mix between 6 glasses and refrigerate for a minimum of 4 hours to set.
For the salad, combine mangoes, passionfruit pulp and sugar in a bowl and stir to dissolve the sugar.
To finish, remove the panna cotta from the refrigerator. Add the mango and passionfruit salad to each glass and serve.



Kernot Food & Wine Store
Paul and Julie Johnston

Open

Thursday & Sunday 9.30am - 8.00pm

Friday-Saturday 9.00am - 10.00pm

Breakfast & Lunch Thursday to Sunday

Wood Fired Pizza Thursday to Sunday

Dinner Menu Friday & Saturday

[Winter opening times may differ]

Live Music Friday Night & Sunday Lunch



1075 Kernot-Loch Road
Kernot, Victoria 3979
03 56 788 555

kernotfoodandwinestore@gmail.com
facebook: Kernot Food and Wine Store

BASSINE SPECIALTY CHEESES

Bass River Dairies Whole Milk. 1 & 2lt.

Plus an exciting range of gourmet cheeses, made on the premises.

Café, Lunches, and yummy Ice Cream.

Now Open 7 days a week
Mon-Fri 10-4, Sat-Sun 10-6
Phone 0466 183 513



TRAVEL
060INSURANCE
**Terms & Conditions apply.

Cover tailored specifically for over-60s.
The best holidays come from peace of mind.
For more information call 1800 622 966



DEMENTIA

Dr. Rachel Wonderlin



I WANT TO GO HOME?

"When I come to visit, my dad says that he wants to go home," she said. "I think I should've just kept him there...I should've taken care of him at home."

I hear this all of the time at my dementia care community. Family members come in, teary-eyed or angry, and suggest that their loved one wants to go home.

What I usually explain is this: our residents don't normally ask us about going home, or not nearly as much as they ask their loved ones. Seeing a loved one is a "trigger" for wanting to go home—it's a reminder that "home" is no longer where they live.

But, what is home?

I used to take care of a woman at her house. I went over there three times a week and worked "third shift," aka the overnight shift. I would help Helen get ready for bed,

and then I would tuck her in.

Before it was time for bed, though, Helen would ask me about going "home."

"My husband is waiting for me," she'd explain. "I need to get home soon, if not tonight, we need to go tomorrow."

The thing was, Helen had lived in the same house for nearly 50 years. Because of her dementia, she no longer recognized her house as her home. The "home" she was looking for was sometimes her childhood home. Sometimes it was the home that she had raised her children in, and the home where her husband woke up beside her each day. That home, although it belonged in the same house, was no longer recognizable: her husband had passed, and her children were grown.

I told her family about this, and tried to explain that, truly, Helen would do well in a long-term care community. Her family did not want to move her, although she would've benefited from the 24-hour care and ability to socialize with other residents.

"Do you think we can go back to my house tomorrow?" Helen asked.

"Sure," I said. "We'll go tomorrow."

Dr. Rachel Wonderlin

<http://dementia-by-day.com/>



2017 Flu Vaccinations

2017 Influenza Vaccinations

Where: DG Nurse Practitioner Clinic, Grantville.

When: Vaccines will be available in first week April.

How: Phone 5616 2222,

Ph/text 0467 841 782 for appointments.

Flu Vaccination free to eligible persons.



Grantville Medical Centre
2/1524 Bass Highway,
Grantville

For Appointments Call
(03) 5678 8029

Hours

Mon - Fri 9.00am - 4.30pm
(Wed closes at 1.00pm)
Closed over lunch period

Bulk Billing

All Pensioners, Health Care Card
Holders and children under 16 are
Bulk Billed.

www.wonthaggiemmedical.com.au



Nurse Practitioner

DG Nurse Practitioner
Grantville Transaction Centre
Cnr Bass Hwy & Pier Rd
Grantville, 3984

Hours

Mon, Tues, Thur, Fri 8:30 am - close

Bulk Billing

All consultations bulk billed
May have fees for some procedures*

For appointments phone
5616 2222

or

0467 841 782

Same day appointments available

Some of the services available

Fluvax
Men's Health
Referrals
Wound Care
Dressings*
Lesion removal*
Treatment minor illnesses / infections

Immunisations
Prescriptions
Skin Checks
Women's health
Ear syringing*
Suturing*



FOCUS
on Lifestyle

Fred Lodge

Factory 3, 17-19 The Concourse, Cowes, Vic, 3922
Ph: (03) 5952 3352 Fax: (03) 5952 3342
Mob: 0437 243 448
E-mail: focus@waterfront.net.au

Mobility Aids & Lifestyle Products

Nici Marshall
MASSAGE THERAPIST

*Relaxation *Therapeutic *Deep Soft Tissue
*Myofascial Release *Sports Massage *Myofascial Cupping
*Pregnancy Massage *Manual Lymphatic Drainage

[facebook.com/nicimarshall](https://www.facebook.com/nicimarshall)
0488 665 051
5/39-41 Panorama Drive
San Remo 3925
nici1968@hotmail.com
Member of AAMT

IS IT POSSIBLE TO DETECT PARKINSON'S EARLIER?



Parkinson's disease has long been a source of confusion, misinformation and misunderstanding, with many believing it to simply be "the shakes". But there is so much more to this cruel and complex disease.

According to Parkinson's Australia, there are currently around 70,000 people affected by the disease in this country alone. The average age of diagnosis is 65 years, but for some, the dreaded news can come much earlier.

"My mother had Parkinson's," Over60 community member Pauline Marrone explains. "She was first diagnosed at 43 years old and passed away at 73. The last 10 years of her life, once she became bedridden, were terrible to watch, particularly the involuntary jumping of her legs after she had taken her medication. My dad was her carer. He passed away in his sleep, in bed next to her, and she was unable to do anything but lay there next to him until help arrived. It was very traumatic."

Not only is its cause currently almost impossible to pinpoint, it's also notoriously difficult to diagnose, as there are currently no laboratory tests available – diagnosis is all down to examinations conducted by neurologists.

To understand a bit more about the disease, and learn about an exciting breakthrough that may lead to the development of an effective treatment, we spoke to Associate Professor Antony Cooper. As head of the neuroscience division at the Garvan Institute of Medical Research, his work focuses on a number of neurodegenerative diseases – primarily, Parkinson's disease. "We're looking at two things," he explains.

"One, to try and understand what are the early events that cause or contribute to Parkinson's, because if we can identify them, it gives us a way of trying to find a therapy that would stop this disease. And two, to search for biomarkers (indicators of disease).

"In Parkinson's, you start to get neurons that either degenerate (which means they die) or simply aren't working, which is really the same outcome – in that different parts of your brain stops working properly. "With one part of your brain not working it produces specific symptoms but then the problem "spreads" to another brain region, causing that region to fail which results in a new set of symptoms. As time goes on, you get more and more brain regions affected, and therefore you gain new symptoms and the symptoms you already have get worse. This is disease progression."

There may be hope, however, in slowing the progression of the disease. Current therapies only treat certain symptoms rather than tackling the disease as a whole. Associate Professor Cooper believes his team's research could lead to the development of a treatment, which would get to the root of the problem and prevent the disease getting worse.

"There's a protein called alpha-synuclein which is quite central to the disease. It's recently been proposed that the progression of the disease – that is, the timing pattern in which parts of the brain fail – is that this protein might be moving from one brain cell to another, where it triggers the next cell (which was healthy) to fail or degenerate.

"We're also looking at a second Parkinson's disease gene called PARK9 (or ATP13A2), which is involved with how the cell copes with toxic levels of alpha-synuclein. It protects the cell against rising levels of alpha-synuclein and also impacts how that alpha-synuclein is perhaps transmitted from one cell to another. A number of us at the Garvan are investigating if we could interfere with that transmission of alpha-synuclein between cells, we might be able to stop the disease getting worse, which would be fantastic."

Therapy will be most beneficial if we can

give it to people very early in the disease course.

"Part of our problem is that by the time some people are diagnosed, they've already got a resting tremor in their hand, and by that stage, you're probably in the mid-course of the disease," he explains. "So, we need to be able to diagnose people much earlier. And that's pretty hard, because the really early symptoms don't necessarily suggest Parkinson's, so we need earlier indicators – biomarkers. Some people may have had the disease for five years before they began to show symptoms. So, the earlier we can detect it, if we have a therapy, we could give those to people before they even have symptoms, and we may stop the progression really early on. Pre-symptomatic diagnosis, that's our goal."

Associate Professor Cooper hopes that, one day, if the search for biomarkers is successful, diagnosing early Parkinson's will be as simple as a trip to the doctor. However, without proper funding, diagnosis will remain a struggle.

"If you wonder whether you're diabetic or have high blood glucose, you go and have a blood test where they take a measurement and say, 'you've got 5, that's healthy,' or 'you've got 7, that's a concern'. That's a biomarker for diabetes. So, we're looking for biomarkers that we can measure so that, maybe at the age of 50, you can stop by your GP and as part of your blood test they screen you for Parkinson's and say, "hey, your markers indicate very early stages of Parkinson's, we've got this therapy," or 'we're going to monitor you for another year and see if it gets worse,' and ideally, we'd be able to significantly slow the disease and add an extra five or more years of being symptom free."

OVER60SIXTY

<http://www.oversixty.com.au/>

THIS IS SPONSORED CONTENT
BROUGHT TO YOU IN CONJUNCTION
WITH GARVAN INSTITUTE.

<https://www.garvan.org.au/>



"Safflower Chinese Medicine, more choices naturally"
Individual consultations and low cost community acupuncture sessions available to get your health on track.

safflower
Chinese Medicine Dispensary & Clinic

Call now: 03 5956 7011
reception@safflowerclinic.com.au
www.safflowerclinic.com.au

Ella Hayes
Health & Trauma Counsellor

Phone: 0407814049
Email: elephant_ella@bigpond.com

Your Health - Your Choice



PHILLIP ISLAND JAZZ CLUB
Sunday April 23 2 - 5pm
New Orleans Swamp Dogs.



Paul Ingle – Trombone/Vocals
 Ian Hellings – Trumpet/Cornet
 Leonid Grigoryan – Clarinet/Sax's
 Clint Smith – Banjo/Guitar
 Geoff Kluke – String Bass
 The New Orleans Swamp Dogs have been pleasing audiences for the last few years with their happy traditional jazz for dancing and listening pleasure. Although the musicians may be known to you, once they all get together, they create an individual style of jazz not unlike the famous Hot Five sessions lead by Louis Armstrong.

21st May – Suzanne Petersen

For more information please ring Robin Blackman on 0432 814 407.

Moe-Latrobe Jazz Club



Friday April 28 8-11pm
The Swamp Dogs
Enquiries: Bruce Lawn 5174 3516

South Gippsland Jazz Soc.

Inverloch Jazz Club

Sunday May 14

Maree Wilson & Friends.

June - T.B.C

Enquiries: Neville Drummond 5674 2166



Saturday May 6

Coronet Bay Hall

7 - 11pm

Coronet Bay UNPLUGGED continues to attract good audiences every 1st.

Saturday of the month at 7pm. at the Coronet Bay Hall, Gellibrand street.



No matter what style of music you like there will be something to your taste. You can bounce along to rock or shed a tear with heart rending folk, or just have the troubles of the day flow away with beautiful classical music and poetry. Truly the best value entertainment around, it's just a gold coin to enter and supper is provided.

WIN A CD

For your chance to win a fabulous Australian Jazz CD simply send your name and address on the back of an envelope to:
 PO Box 184 Grantville, 3984,
 or you can Email: Win A CD to editor@waterlinenews.com.au
 But, don't forget to include your name and address if you are emailing.
 Congratulations to our March winner, your CD is in the mail.

Why not try your luck this month?



KERNOT FOOD & WINE STORE



Friday & Saturday nights, Sunday afternoons .

Live music at The Kernot Store.

For details on who is performing and to book a table:

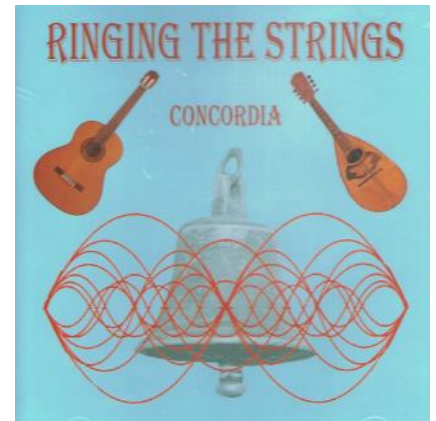
Call Julie on 5678 8555



The Jazz Club - 12-2pm Saturdays.



CD REVIEW



RINGING THE STRINGS

Concordia Mandolin and Guitar Ensemble

Something a little different this month with a new CD from the Concordia Mandolin and Guitar Orchestra, which features two outstanding local performers, Judy John and Carol Robinson.



Concordia performed at St Phillip's Anglican Church in Cowes last month, to the delight of those who attended. The performance and this CD are highlighted by the outstanding performance by the extremely talented guitar soloist, Michelle Nelson.

The Ensemble plays pieces by Gabriel Faure, Erik Satie, (arranged by Michelle Nelson) Francois Menichetti, Peter Sculthorpe, Stephen Lalor and Michelle Nelson.

Solo performances by Juliette Maxwell (accordion) and Michelle Wright (mandolin).

Details on how to order the new CD and others by the ensemble are available at: <http://www.concordiamandolins.org.au/CompactDiscs.html>

Roger Clark

Are you having difficulty tuning in to 103.1 3BBR-FM?



West Gippsland Community Radio Inc.

You can now hear your favourite programs through our streaming service.

Find the link at: www.3bbrfm.org.au

STARS SHONE AT SUNSET



It certainly was a great night at the Grantville Reserve for Serenade at Sunset where a magnificent performance was provided by both the professionals from Melbourne and our local Rising Stars.

The two Serenade aims were again evident.

1. assisting our young local talent with finance and stage experience and,
2. providing our community with a professional performance at an affordable price.

Again, we saw our Rising Stars provide us with magnificent performance but importantly they were rubbing shoulders with professionals and learning from it. Performing on stage with such professionals is real hands on assistance for the young people.

It has been a delight over the years at Serenade to see the development of these young people. Some of us will remember Maria-Rosa Gatto appear for the first time at 14 years of age, now at the ripe old age of 17 she wowed the audience with a confident and powerful performance.

Corey Green – now here is someone with a great future; he only started singing four years ago under the tutelage of Kirk Skinner and how he has developed! We have seen this during the last few years and his talent is such that he has already played the title role in ‘Pippin’ and the demanding role of Che in ‘Evita’. What a future he has!

Then we had the pleasure of welcoming Alliza Miel for her first Serenade performance and what a performance it was; the audience loved her rendition of ‘You

Raise Me Up’ among others. She is a former member of the Australian Youth Choir and is currently taking private voice lessons. Her performance was a delight and you have the opportunity to see her again in the coveted role of ‘Kim’ at the Wonthaggi Theatrical Group’s 2017 production of ‘Miss Saigon’. The Serenade concept is unusual, but powerful, and the proof is in the pudding. What has happened with some of our past Rising Stars? Well Kate Amos has recently been performing in London, Alexandra Flood is studying and performing in Munich while our latest to flee the nest is Tom Green who is finalising his Bachelor Degree in Music, performing and has recently started a music teaching cadetship. It is not suggested that Serenade is responsible for their success, that comes from their own hard work, teachers and talent, however we do believe that this Serenade concept has a role to play in their development.

We were fortunate to see Tom Green, one of our past Rising Stars perform, who along with Lucy Najm opened the show. These two are local favourites and the audience loved them both. Also in the first half we were lucky to see the Newhaven Boys Vocal Group that was formed in 2012 and performs at a range of community events. They showed their versatility with a most accomplished performance. For something different we had Jake Amy and the Groove Hunters perform their own brand of music that mixes jazz, pop, blues and soul. Although they are now based in Melbourne they are local Bass Coast people. We then enjoyed the Headline Act of Andrea Creighton, Josh Piterman and Verity Hunt-Ballard who had been brought to us by David Rogers-Smith and once more David provided us with a magnificent production. Although the music was mainly Music Theatre one of the highlights was David and Josh performing Nessun Dorma as a duet. Unusual but delightful, it worked and the audience loved it.

The finale was magnificent with all the cast including the Rising Stars providing the audience One Day More that received a

standing ovation.

It was a marvellous night, with magnificent music and a community coming together. The only disappointment was the small number in the audience; many people have missed an event that Bass Coast can be proud of. Maybe the weekend was not suitable but clearly for those who did attend it was magic.

I am constantly being stopped by people saying what a great experience it was and one said that she had tears in her eyes as she left. You really cannot get a greater compliment.

Barry Hutton

NEWHAVEN CONTRIBUTION

Another highlight was the outstanding presence of performers with a connection to Newhaven College.

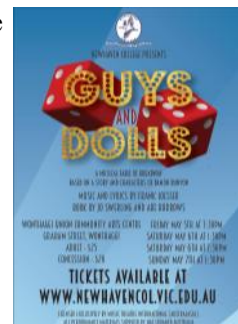
In addition to the incredible, Newhaven Boys Vocal Group, former students Emma Volland and Jake Amy the pianist gave an outstanding performance.

Both have regular gigs, including Paris Cat in Melbourne.

Newhaven, were also represented by student Maria Ros Gato, Tom Green, Teacher at the School, another former student, Corey Green, and Director of Music Kirk Skinner. School Principal, Gea Lovell, said “I was very proud of them all”.

Newhaven College students and staff have been enthusiastically preparing for their 2017 musical production of **Guys and Dolls**.

Four shows are being held at the Wonthaggi Union Community Arts Centre from Friday 5 May to Sunday 7 May. Tickets are available at www.newhavencol.vic.edu.au and for cast profiles and regular updates, follow the Newhaven College facebook page, www.facebook.com/newhavencollege
See More details on Page 3 Roger Clark



We are here to help you.

When quality counts.



PETER BUITENHUIS
Chief Executive Officer
0407 045 525



MIKE FOENANDER
Executive Residential & Commercial Sales Manager
0408 547 677



JENNI KENT
Sales Property Consultant
0428 566 643



MARC COULTRE
Sales Property Consultant
0477 045 744



BETH LYNCH
Sales Property Consultant
0402 518 313



JOSH DUNSTAN
Residential & Rural Sales Consultant
0407 558 933



GREG DAVIS
Sales Property Consultant
0488 279 740



SARAH FOSTER
Sales Support
5952 5100



MELISSA STEINER
Sales Support/Reception
5952 5100



CAMILLE MORRIS
Marketing & Business Development Manager/IT
0417 181 961

Sales
59525100

54 Thompson Avenue, Cowes Vic 3922

Judith Wright **Stockdale & Leggo**

real
estate

www.phillipisland.com.au

Welcome®

The French Island News



FRIENDS OF FRENCH ISLAND NATIONAL PARK (FOFI)

Secretary: Meredith Sherlock. Phone 0438 077329, email: secretary@fofi.org.au



FOFI Project Days

Third Saturday each month - activity to be confirmed. Contact Meredith for details, closer to the date.

More details on: www.fofi.org.au

More details on: www.fofi.org.au

FRENCH ISLAND COMMUNITY ASSOCIATION

French Island Community Association
Tankerton PO
French Island
Victoria 3921
secretaryfica@gmail.com



EMERGENCY SERVICES

There is no regular police presence or ambulance service on the island. French Island has a Country Fire Authority (CFA). There is one fire engine stationed permanently on the island, next to the Community Hall on Tankerton Rd. CFA volunteers are able to respond to any kind of emergency. Calling 000 is always the best option in an emergency.

NURSE ON CALL

For non urgent health issues islanders may utilise the Department of Health's Nurse on Call service:
Nurse On Call 1300 60 60 24

AMBULANCE SERVICES

Ambulance Membership
Membership Enquiries 1300 366 141 (Mon-Fri 8am-8pm, Sat 9am-5pm). Membership is advised as Air Ambulance is used from the island. If local support is required ask Ambulance to request CFA support on the island.

FIRE PLAN

All bushland residents should have a personal fire plan. The French Island CFA hosts annual information sessions which give concrete advice on this topic. The CFA is also happy to visit individual properties to further aid in the development of fire plans. As for all of Victoria, fire bans and other instructions issued by the CFA should be followed.

POISON INFORMATION HOTLINE 131126

French Island General Store and Post Office

From bread and milk to plumbing supplies, the store provides so many goods and services, we can't name them all here. In the meantime, whether it's distilled water for batteries or a fuel filter for the car, ring to find out what's in stock. Newspapers can also be ordered from the store with at least 24 hours notice.



289 Tankerton Road, French Island 3921 (03) 5980 1209

FRENCH ISLAND FERRY

The French Island Ferry is a ferry service which runs between Stony Point on Mornington Peninsula and Cowes on Phillip Island, via French Island.

The ferry departs from:

Stony Point Jetty on the Mornington Peninsula
(Stony Point Station is a short walk from the jetty)
Tankerton Jetty on French Island
Cowes Jetty on Phillip Island

Fares:

Tickets are available at the Stony Point kiosk, and also on board the ferry.

Please note: the French Island Ferry is not a myki ticketed service.

The following fares apply:

Adult: one way - \$13.00, return \$26.00

Child*: one way - \$6.00, return \$12.00

Pensioner/concession: one way - \$8.00, return - \$16.00

Bicycle (additional cost): one way - \$4.00, return - \$8.00

*Children aged under 4 years travel free.

*Child fares are available for children aged from 4 to 12 years old.

For more information, see the French Island Ferries website http://interislandferries.com.au/fi_costs.php

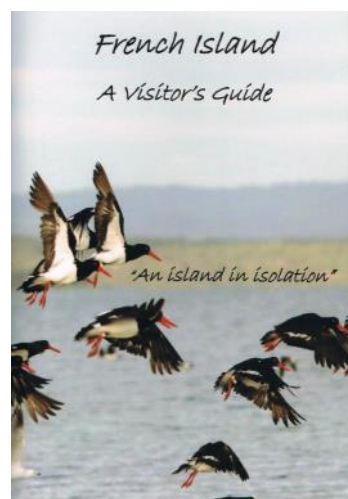
New French Island Visitor's Guide

Now available:

From the General Store

Or Email the author
Christine Dineen

dineenc@optusnet.com.au



Notices for the French Island section of

The Waterline News should be sent to:

editor@waterlinenews.com.au

by the 1st of each month.

The French Island News

Visitor's Guide author Christine Dineen on radio Roger Clark

Turned on the radio in the car on the way to deliver some of the Waterline News to outlets last month, in the middle of a discussion on French Island.

Visitor's Guide author Christine Dineen was one of the callers to Jon Faine's ABC radio programme and thinking she got cut off a bit short, I emailed her when I got home. This is what she had to say.....

"I was disappointed that I was cut off so quickly when talking to Jon Faine on morning radio last week but at least I was able to most emphatically dispute the statement made by a listener that French Island is a mosquito infested swamp. The ignorance about the island in times of so many forms of "communication" amazes me.

Another exchange that demonstrated a lack of insight occurred when I took a copy of the new edition of the Visitor's Guide to French Island to the Information Centre in Federation Square. The person responsible for vetting which guide books are included at the centre stated that she wasn't interested in show-casing the book as she had asked two of her colleagues about French Island and they knew nothing about it - including where it is.

I responded that this lack of knowledge about the largest Victorian island was one of the reasons why a book which informed visitors about what the island has to offer should be included in their display!!!

I had intended to mention this at the launch in the hope that people visiting the city could complain about such an oversight, but with the excitement of the event, I forgot.

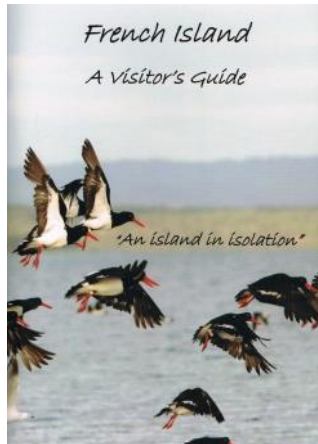
I also wanted to mention to Jon Faine that the book had again been a collaborative process, with the islanders and Parks supporting its revamp.

I particularly wanted to explain that it had been dedicated to Mick Douglas, the ranger that had worked for decades to ensure that the island gained the recognition it deserved as a national park.

I would have liked to have emphasised to Jon Faine that the island is not for everyone. if you don't know the difference between a swamp and wetlands, if birds and koalas in their natural environment and a quietness that comes from bicycles and walkers rather than traffic and congestion are not your thing, then stay away.

I could have then added that French Island is a haven to be enjoyed and we are so lucky that such an island exists in close proximity to the city. But I was told to hold the line and then I heard a loud bip bip. My call had been terminated!

Well done Christine !



French Island Community Tip

Working Bee Time: 10am - noon

Got a little spare time this year to help keep the tip tidy?

Here are this year's dates.

April 10

May 8

June 12 (Queens Birthday holiday)

July 10

August 14

September 11

October 9

November 13

December 11

BYO water, gloves, hat, mozzie repellent and sunscreen.

Contact: Linda on 0413 919 607



French Island Landcare



Beekeeping Information Session.

When: Friday April 28

Where: 119 Clump Rd.

Time: 10.00 - 11.30am.

Landcare Ordinary Meetings

All Landcare members are welcome to attend.

Mondays 9.15am at the hall on the following dates.

March 20 April 24 May 15

**For more information on any of these events, contact
filandcare@gmail.com.**



**Landcare Nursery
Volunteers are always
welcome at the nursery on**

**Wednesdays and Thursdays from 10am to
noon.**

Contact: filandcare@gmail.com.

Contact Terri:

0413 088 527



The French Island News

A FORGOTTEN PROPOSAL

(From FOFI News - March)

In 1899 there was growing recognition that chronic alcohol abuse was an illness requiring treatment and rehabilitation rather than punishment.

This led to a government inquiry and the Report of the Board appointed to inquire into the Question of the Treatment of Habitual Drunkards (Victorian Parliamentary Paper no. 49, 1899).

The Board considered that:

The establishment of a retreat in a country locality is best suited to the needs of the confirmed drunkard.

Out-door employment has been emphasized as the most important and needful for the building up of the system broken down by the excessive use of alcohol.

To conduct such a place as if it were merely a prison would not be the means of obtaining satisfactory results, but the more it is looked upon as a retreat established for curative treatment, and managed as such, the more likelihood there is of success.

French Island, in Western Port, has been suggested and supported as a most suitable place for the object in view, and reports have been received from gentlemen acquainted with the locality.

It possesses the advantages of being isolated, and, having no licensed houses or wine shops, is at the same time within easy reach of Melbourne.

Legislation will be necessary to prevent the supply of liquor to any one committed to this retreat.

A visit was paid to this island, and we consider that a site for the establishment of a retreat for persons of the poorer classes could be selected there, and as a great deal of labour would require to be expended before produce, &c., could be raised to contribute towards their support, ample opportunity would be afforded for the regular and necessary employment of the inmates. Suitable buildings of an inexpensive character could be erected, providing accommodation for about half-a-dozen persons in each, and it would be necessary for the superintendent, who should be a medical

man, to reside on the spot.

Facilities should be given for religions and moral influences to be exercised on the inmates, as evidence was given that this is a most important factor in effecting permanent results.

Provision could also be made on the island for female inebriates, and their employment could take the form of laundry work for the men, in addition to any other suitable occupation in which their labour could be profitably employed. Their place of residence should be in a different part of the island from that of the men. The members of the Board were (Major) John A. Christophersen, Tankerton; M. Callanan, "Coolebah", Somerville; and John Stevens Smith, Melbourne Seed Warehouse.

Like so many other "good ideas" for French Island over the years, this proposal apparently came to nothing, but from a conservation point of view we can be grateful.

Callanan submitted that "with the expenditure of a few hundred pounds in draining, [the northern marshes] could be made first-class fattening land for sheep" and Stevens enthused that "a very large area of rich flat land could be reclaimed along the north shore, with a little engineering skill similar to which is done by the Dutch farmers in Holland".

Fortunately all of the north coast saltmarsh has been included in the Western Port Ramsar site since 1982.

Christophersen also noted that "there are only about 30 families on the island ... and almost all of them are very abstemious people"!

Meredith Sherlock

Pic - Human remains at Tortoise Head

Walter Mitchell

FRIENDS OF FRENCH ISLAND NATIONAL PARK

President: Chris Chandler 0407 705 450

Secretary: Meredith Sherlock 0438 077 329

Email: secretary@fofi.org.au

Website: www.fofi.org.au



VAN STEENSEL TIMBERS

EST 1965

EXPERT ADVICE AND
GOOD OLD FASHIONED SERVICE

DELIVERY ALL AREAS

TIMBER-HARDWARE-PAINTS-TOOLS-WATER TANKS

Cnr. Bass Highway & Glen Forbes Rd, Grantville 03 5678 8552

421 Princess Hwy, Officer VIC 3809 03 5943 2371

The Bass Coast Post in Print

Bass Coast Post



Online news, articles, columns, photos by and for Bass Coast residents.

In Memorium: Footy, laughter and War



A turn around the Loch footy oval has Bob Middleton contemplating the roar of the crowd and the waste of war.

Footy returned to Loch after 22 years' absence. July 18, 2015

OUR dog Charlie, the one who charmed his way out of the lost dogs home, has a close relationship with the Loch footy oval. He takes me there at least twice a week to do laps and meet up with some old friends and check out the oak trees that surround the oval.

The reserve is almost circled by these ancient oaks that offer kind shelter on rainy mornings and, with the surrounding hills and the river, they form a natural amphitheatre that produces an atmosphere of its own making.

When I read through the history of this ground, I can understand why some locals still refer to it as "The Footy Oval". Your imagination can pick up the noise of the crowds as you walk around the field. I have reliable confirmation that the last game was played back in 1993. Pat Kennedy was working on renovating the pavilion when Charlie and I strolled by some weeks ago. He says he was out there playing in that final match, so he would know.

This year some wise people got together and entered three teams in the Warragul & District Competition so footy is back. Poowong-Loch now fields an under 10, under 12 and under 14 team. They have not had a lot of impact on the scoreboard so far but George Elton, president of the Memorial Reserve Committee (Loch Memorial

Reserve is the oval's official name), tells me the under 14s had some success in the early part of the season. But it's early days yet, let's give the lads time.

The oval has been recently equipped with goal posts and guard rails and the reserve committee has organised and paid for a pavilion upgrade. The light towers that grace the oval were built back in 1974. Cricket has been a constant summer sport here so it's a healthy and welcome trend to see the return of junior football.

The community raised the funds to put a suspension bridge over Allsop River. As I look through Garry Knox's recorded history of the oval, Reserved Space, I'm reminded how country communities work together. The development and maintenance of this ground down through the years is the work of many dedicated groups and individuals. The features and amenities they have achieved are quite astounding. Apart from the club rooms, there are cricket nets, tennis courts, a soccer practice area, a large covered barbecue gazebo and camping facilities. One special feature is the pedestrian suspension bridge which sways 40 feet above the Allsop River bed.

Included in Garry Knox's book is a section about Loch, Stock and Barrel, a successful fund-raising group that purchased a tractor and mower for the reserve, financed clubroom renovations and donated towards the building of the pedestrian suspension bridge. The reserve benefited to the tune of \$46,000.

The Loch, Stock and Barrel group sound a lively lot. There is a story told that committee member Carolyn Wilshaw took an injured man to hospital one Sunday. In return, she received flowers which led to marriage two years later.

At one of their many social gatherings, the band put a call out on the microphone to get committee people on to the stage to stop people throwing beer. The committee were near the stage and it turned out they were the ones throwing the beer. But my favourite is the one of an unnamed committee person body surfing down the marquee on left-over bags of coleslaw.

I have heard that nudity was always guaranteed on a Sunday morning. What were they doing? Diving into the Allsop River?

It is a sobering experience to walk the perimeter of these grounds. Fifteen oak trees partially surround the oval, each with a plaque dedicated to World War II soldiers to whom (along with WWI soldiers) the Loch Memorial Reserve is dedicated. All but three lost their lives while still in their 20s.

There are just two oaks on the eastern side of the oval which I like to think of as the Coster-Pedder wing. One is dedicated to Jack Coster, shot down over Germany in 1945. The other to Ernie Pedder who died on the Kokoda Track in 1943. Both were aged 20.

Behind the gazebo are a line of oaks, two of them dedicated to two airmen of the RAAF. Both are listed as J. Brock and both lost their life in 1943. For a while I wondered why the duplication but looking closer saw that dates and service numbers did not match. They were brothers.

Part of a family of six, John (Jack) Brock, aged 23, lost his life when the aircraft he was in disappeared over Cologne after dropping flares. His elder brother James (Ray) Brock was killed in an aircraft accident in Geraldton, WA. The story has it he was on a flight from Darwin to Geraldton. On arrival they had to circle for some time waiting for airport landing strip lights to be turned on. The plane ran out of fuel, six of the crew were killed while two escaped injury. Their plaques reveal they were born on the same day three years apart and died on the same day of the month four months apart.

Every day that Charlie and I visit, I become more fluent in the language of war and its madness. But mixed in with the sorrow, there is also a feeling of peace to be found here. Walking around the Loch Memorial Reserve can do that to you.

Bob Middleton



QUIZ?

1. What is the Italian word for pie?
2. What is the national flower of Wales?
3. Which Australian marsupial enjoy eating eucalyptus leaves?
4. Which reptile, according to the song, should you never smile at?
5. Alfred, an ancient King of Wessex, is famous for burning what?
6. In nautical terms, what is the opposite of port?
7. How many bones are there on a Skull & Crossbones flag?
8. What was Marilyn Monroe's natural hair colour?
9. Name Fred Astaire's famous red-haired dancing partner.
10. What is the world's tallest tree?
11. What name was given to the soldiers who protected Roman emperors?
12. Which two metals is pewter made from?
13. What was Louis Armstrong's chosen form of music?
14. Name the port of Rome.
15. Paul Newman ate fifty eggs in which film?
16. Don Alfonso is the lead role in which opera?
17. Which city does the River Lagan flow through?
18. Who sang about being an eggman and a walrus?
19. What takes place in Hong Kong's Happy Valley?
20. Which country does the sport of pelota come from?

ANSWERS

1. Pizza. 2. Daffodil. 3. Koala. 4. Crocodile. 5. Cakes. 6. Starboard. 7. Three. 8. Ginger. 9. Ginger Rogers. 10. The Coast Redwood (one of three sequoia species). 11. Praetorian Guards. 12. Tin and lead. 13. Jazz. 14. Ostia. 15. Cool Hand Luke. 16. Così Fan Tutte, by Mozart. 17. Belfast. 18. The Beatles. 19. Horse Racing. 20. Spain.

THINKERS WANTED

South Coast Speakers Toastmasters

Meet on the 2nd and 4th Wednesday from 7.30pm to 9.30pm at the San Remo Hotel, 145 Marine Parade, San Remo.

If you would like to come to check it out,

call Brigitte 0421 812 691

info@southcoastspeakers.org.au



Trivia and Philosophy



PLACE NAMES & THEIR MEANINGS

French Island

Originally named Ile des Francais (Island of the French people) by the 1802 French scientific expedition led by Captain Nicholas Baudin. The island was renamed French Island as early as 1826.

Gippsland

Named in honour of Sir George Gipps, Governor of New South Wales from 1838-1846. The Cardinia Creek was the boundary between the Port Phillip District and Gippsland. Thus the Central Hotel (on the Cardinia Creek) was at one time called the Gippsland Hotel. The Gippsland boundary is now the Bunyip River.

Jam Jerrup

From the Aboriginal words jham meaning "separated" and jerrup meaning "friends".

Lyall's Inlet, Western Port Bay

Named after William Lyall (1821-1888) owner of the nearby Harewood property.

Moody's Inlet, Western Port Bay

Named after Christopher Moody (1833-1920) Koo-Wee-Rup land owner and Cranbourne Shire Councillor

Nyora

From the Aboriginal word for "wild cherry tree". The area was originally known as Lang Lang East until the Great Southern Railway line went through from Dandenong to Port Albert, and the railway station built in the area was called Nyora. This line was opened as far as Lang Lang in February 1890 and it was opened to Nyora and Loch in November 1890. However the actual township site had been proclaimed on December 23, 1886 and it was surveyed in 1887 by John Lardner an assistant surveyor in the Lands Department.

Quail Island, Western Port Bay

Name taken from the birds on the island. Originally called Harris Island, which was

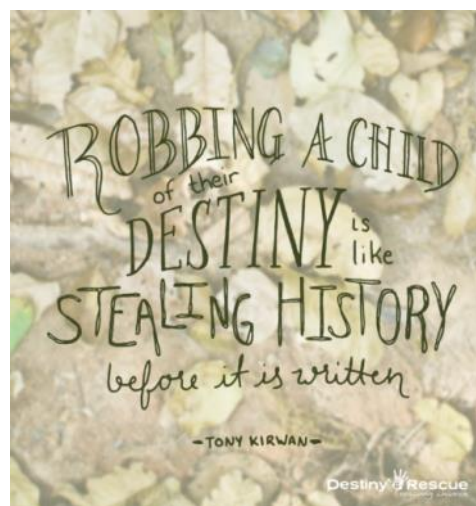
named during Lieutenant James Grant's trip to Western Port Bay, in the Lady Nelson, in March 1801. Surgeon John Harris was a Magistrate and member of the New South Wales Corps.

Rutherford Inlet, Western Port Bay

Named for Thomas Rutherford. Rutherford took out the licence for the Bourbinandera run, of 1800 hectares (4480 acres) in 1842.

Watson Inlet, Western Port Bay

Named after John Watson, whose property 'Freehall', was near to the Inlet. John Watson was the owner of considerable property in the Parish of Tyabb, a prominent citizen and a member of the Mt. Eliza District Road Board. A Mornington Peninsula Shire Council Ward is named after him.



Special Offer...

PRINTED A4 Flyers

- Qty 500
- Full Colour 1 side
- 170gsm stock

= \$66 (incl. GST & delivery)

Call **0404 148 632**

to discuss any printing requirements you may have



Unit 10, 1488 Ferntree Gully Road, Knoxfield Vic 3180
Tel: (03) 8740 3461 | Mob: 0404 148 632
Email: vered@minutemanpress.com



Contact Jamie the TV Guy
8.00am to 8.00pm

0418 504 488



ANZAC DAY SERVICES

Bass:



A Dawn Service will be held at 5.45am at the Bass Cenotaph. The Dawn Service will be followed by a gunfire breakfast at George Bass Hotel.
For more information, contact Terry Salmon on 0418 179 890.

Cowes

6.00am - Dawn service followed by a Gunfire Breakfast as the sun rises over Westernport Bay
10.00am - Morning tea at the Cowes Cultural Centre for marchers and their families
10.50am - March steps off from Cowes Cultural Centre along Thompson Avenue to Cowes Cenotaph
11.00am - Commemorative Service
12.30pm - Post ceremony entertainment at Phillip Island RSL featuring female acapella group, The Valeries

Inverloch

6.00am Dawn Service will commence in the RSL grounds, 15 Bolding Place with a Piper, ex Navy Bugler, readings and candlelight dedication followed by a free Gun Fire Breakfast served by members of the Inverloch & District Lions Club.
10.00am Commemoration Service will be held at The Inverloch Community Hub in A'Beckett Street.

After the service, the Veteran's will form up and march down A'Beckett St with a local band playing, then back to the Cenotaph for wreath laying, ex Navy Bugler, flag raising and National Anthem. The Cenotaph will be covered in hand made poppies made by the many residents and clubs of the local community. HMAS Cerberus and the RAAF Fly over will be in attendance in Inverloch.

The public are then invited back to the RSL for a light lunch and cuppa. The bar will open at midday.

****Both The Hub and RSL have wheelchair accessibility and toilets.**

Kongwak

A service will be held at 10.00am at the monument at the Kongwak Hall, followed by morning tea at the gazebo in the park. For more information, contact Sue Mooney, Kongwak Community Group on 03 5657 4490 or email snsmooney@bigpond.com.

Lang Lang

Members of the public are invited to attend the Dawn Service, to be held at the Lang Lang Shrine at 5.45am.

After the remembrance service a small Dedication Service is to be held for the laying of a plaque in honour of Mr Robert Sproule, who was a POWQ on the Thailand-Burma Railway.

Refreshments will be available in the RSL Hall after completion of the formalities.

Wonthaggi

A Dawn Service is being held at 6.00am at the Wonthaggi Cenotaph followed by a gun fire breakfast at the RSL Hall, Graham Street.

Marchers to gather at 9.45am at the RSL Hall, Graham Street and proceed to Soldier's Reserve and the Cenotaph for a 10.00am service followed by light refreshments at the RSL Hall.

For more information, contact Rod Gallagher on 03 5672 4226

E.E (Betty) Caldwell reflects on Anzac Day.

Eighteen he was. Fit, energetic, eager to arrive where the action was. And now the day had come!

The training had taken months, mainly in Egypt. It had rained much of the time, but even when it hadn't the sand was damp as his diary tells:

6th November 1914: "We slept in the open on the desert and when we got up in the morning everything was wet through with dew. We were camped by the pyramids and sphinx."

The first week at Mena camp the boys had to sleep on the bare ground and it rained every night.

By February 1915: "We are sleeping in the open, our tents are to be left at Mena, and we have to keep our packs ready to go to the trenches at a minute's notice. Our equipment, including rifle and blankets weighs over 100 pounds."

And again on 9th: "It rained all night and our blankets were wet through."

The weather seesawed through March and April – hot, cold and wet. Aboard the Galeka at Lemnos his personal trials began: 16th April: "I was very bad with cold in head and bad throat." Tonsillitis and influenza, he said, continuing daily until 25th – his last entry: "This is it. We are to land on the beach at the Dardanelles." Of course he didn't land.

From his hospital bed he saw the panorama enacted before him – mates clambering down into the ship's life-boats (the navy boys scheduled to ferry then ashore had all been killed by them) – the Galeka being shelled in the process – the moaning from the bunk above until the man succumbed – his own rifle propped in the corner now smashed in pieces.

These things he did not confide to his diary.

Two months passed before the Secretary to the Defence advised his father that he had been wounded but was not in a serious condition. Wrong on three counts:

Mr G not Mr J.

His son was not wounded.

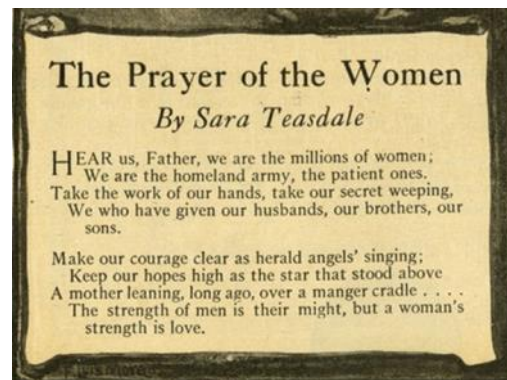
The boy was gravely ill with rheumatic fever and enlarged heart. He was not expected to survive.

During his long convalescence, throughout which he sometimes dreamed of the dark eyed lass he'd met briefly once back home, he wrote several cards to his family, the one dated 24th August saying:

"I am trying to get in the draft that are leaving here today for the front but the doctor won't let me go."

His mates were anchored still at Gallipoli, both the living and the dead. There was yet a lot more dying to be done before they would exchange the Dardanelles for the carnage on the battlefields of Europe.

© E E CALDWELL



History

Fisherman's Cottage Museum Tooradin



The museum is located in Foreshore Road on the edge of Sawtells Inlet (Melway ref 144 A6) and is open Sundays from 12noon to 4pm, or by arrangement. We open the Museum on Sundays from noon until 4pm.

Entry is \$3 adults, \$2 concession and 50c for children. The phone number at the museum is **0359983643**. If you leave a message we will get back to you. Groups can arrange visits at other times.

Polly Freeman

Lang Lang & District Historical Society



The Lang Lang Historical Society meets on the third Tuesday of the month at 1.30pm at the Lang Lang Historical Display Centre, in Whitstable Street, Lang Lang.

The Centre is open each Wednesday 11am - 3pm or by appointment
Secretary Peter Hayden 5997 5114

BASS VALLEY COMMUNITY GROUP

FRIDAY MORNINGS.

COMPUTER CLUB 10.00 - 12.00 (No age restrictions) Informal computer learning and problem solving. Laptops, notebooks and internet access provided, or bring your own. Free tea and coffee. \$8.00 per week, (BVCG Members \$5.00). Bookings essential

Phone: 5678 2277

OUR HISTORY - - SAN REMO CEMETERY by Noelene Lyons

UN-MARKED GRAVE OF GEORGE H.W. PAYNTER Located.

I have recently taken on the project of sorting out the San Remo Burial Register (similar to Wonthaggi Cemetery project). I now have a complete CORRECT Burial register for San Remo Cemetery 1863 - 2016 With San Remo a lot of the graves are un-marked or no burial plots were recorded. I have just been able to name an un-marked



grave of George H.W. PAYNTER d June 6, 1976.

If you are a family member who would like to know where Mr. Paynter's grave is located please contact mea plaque or wooden named cross would look great on his concrete slab....

If you feel you might be able to help me confirm other un-marked burials, then please contact me on 56724739 or email noelene@dcsl.net.au Looking forward to your help

VALE - Dr Peter Brooks

BROOKS. Dr E. P.

(Peter). 4.3.1934 -

25.3.2017 Thank you for

the love and care you

have shown us as

husband, father, father-in

-law and grandfather. A

wonderful life, a difficult

two years. We love you

and will miss you dearly. Alison, Stephen,

Mark, Nada, Suzie, Owen, Roy and

Harrison.



Peter has been a member at Bass Valley Historical Society for over 30 years.

He was a prominent member at Wonthaggi Historical Society and came to Bass Valley as well.

He has been a good friend to the society and its founding members.

He represented the two societies as Vice President of the South Eastern Historical Association and has been a speaker at many functions both at Wonthaggi and at neighbouring societies.

His gentle humour and quick wit will be missed.

Libby Skidmore

Bass Valley Historical Society

Chicory on Phillip Island



Our special report on the history of the Chicory industry on Phillip Island has been held over until next month because of our extended coverage of Anzac Day activities and a couple of "Our People" and special tributes.

www.flyawayscreens.com.au

Decorative Doors

Window Fly Screens
Fly Screen Doors
Diamond Grill Doors



Stainless Steel Doors
Guard Mesh Doors
Pet Doors

Richard Johnson

Mobile: 0409 590 055 Phone: 5659 0055

Re-meshing available

Welded Security Doors and Window Screens

Email: flyawayscreens@gmail.com



VET CLINIC

WONTHAGGI
5672 1044

PHILLIP ISLAND
5956 7262

INVERLOCH
5674 2408

Phillip Island

Wonthaggi

Inverloch

mail@wonthaggivet.com.au

Obituary

VALE ROGER CUTLER

Dairy man turns vigneron with depth and style

Roger Cutler 28-2-1949 – 6-3-2017

Roger Cutler, who grew up on the family dairy farm overlooking the Bass River and saw the property morph into the award-winning Bass Valley Estate, has died, aged 67, after a brief illness.

Life-long friend, Mark Holmes, recalls an idyllic knockabout childhood: fishing in the river with string, hook and tea-tree branch; getting up to no good while their parents were dancing in the old Nyora hall and the kids were meant to be sleeping in the cars outside.

Their stories became family legend, like the day they headed down to the river to pick apples in an old orchard, “armed with buckets and one small whingeing sister in an Annie Oakley outfit” — and their fox terrier picked a fight with a ten foot tiger snake. As they ran for their lives, Roger told them that snakes can travel at thirty miles an hour. “We hit the first barbed wire fence at thirty-one miles an hour,” says Mark. “Roger and I leapt over the top, and then we dragged Linda through the fence. The Annie Oakley outfit and sixguns were still attached to the fence a week later.”

Sport was a huge part of Roger’s life. He played football, cricket, indoor cricket, volleyball and squash at school and community level. “We were fortunate to start our football career at Loch in the late 60’s with many talented footballers and great administrators,” says Mark. The teenage mates played for Loch Seconds in the preliminary final the year the Firsts won their 1967 premiership.

Wherever he lived, Roger played sport. In the late seventies and eighties it was Nyora, Poowong and Korumburra. He played footy with the Beaumaris Sharks and with Claremont in Perth. There were epic wins and losses and memorable premierships: a footy premiership at Beaumaris, a cricket premiership at Nyora, indoor cricket and volleyball premierships at Korumburra. According to Mark, “Whatever sport Roger was engaged in, he gave 110 per cent.”

Not one to get stuck with a bad decision, Roger tested a variety of jobs before he found his vocation. As a young twenty-something, he worked for a number of different companies, mostly in sales, in which he showed promise.



At Nissan he and Mark Holmes earned the nicknames Hand-Out Holmes and Cut Price Cutler.

During these early years he and his future wife Robyn met through friends at a party in Melbourne. They were married two years later in 1973.

In 1974, Roger and his brother Ray took over their parents’ delicatessen business in Beaumaris. Roger eventually bought the milk bar two doors down from the deli. A brief foray setting up a deli in the new Cranbourne Plaza followed in 1978.

Then came the life-changing decision: he and Robyn and their young son Ben returned to the family dairy farm on Nyora-St Helier Road. Their daughter Emma was born soon after.

Roger’s uncle, Frank Cutler, had pioneered cool climate wines at Western Port Winery — today The Gurdies Winery — and Roger and his father had helped plant the vines. When deregulation of dairy farms loomed in the late 80’s and they put down ten acres of their own land to vines with cuttings from Frank’s winery, a wine-making dynasty was born. Bass Valley Estate Wines took root and flourished.

At first, being a farmer, Roger preferred the challenges of viticulture. But over time he became more interested in crafting the wines, seeing “the fruit of the vine in the bottle.”

Always inquiring, Roger enrolled in a Bachelor Degree in Viticulture and an Associate Degree in Applied Science: Wine Making and Appraisal. He knew his high distinctions were partly due to Robyn’s proof-reading of his assignments. “Luckily, for Roger,” says his sister Karen wryly, “Robyn survived his scholastic years.”

In his search to create an exemplary product, he produced his share of award-winning wines. Those that met his own criteria made him happiest: cool climate wines of an exceptional local flavour exploiting the grape’s natural seasonal and annual qualities and integrating the oak flavours from the barrels — “slower drinking wines that satisfy and reward the palate.”

The Gurdies Winery owner, Dick Wettenhall, tells of the debt owed to Roger by newcomers like himself. “With his combination of local knowledge and formal qualification, he’d become a kind of elder statesman in the area.” He was very influential in the development of South Gippsland Wine Inc., “finding ways to represent wine in the region and promote tourism.”

Karen Cutler tells of the slow transformation of the farm. The cowshed became the tasting room, but remained a cowshed for a few years. It’s now a great wine tasting and entertainment venue where the infamous Cutler Ploughman’s Platter, helicopter tours and functions enable people to linger longer and enjoy the magnificent valley views.

Karen closes her eulogy with this image of a loved and loving son, husband, father, grandfather, brother and friend in the place of his creation.

“At the end of a busy day, or any day for that matter, Roger would often sit alone in the winery, listening to the music he loved, with a glass of his favourite Cabernet Sauvignon in hand, looking over his valley, contemplating life.”

This obituary was derived principally from the eulogies of Karen Cutler and Mark Holmes.

Gill Heal

On the road - places to go

TARWIN LOWER - EASTER

Good Friday:

All Day – CFA fundraiser – “You Beaut” Raffle, (Fantastic Prizes) \$2 per Venus Bay Surf Lifesaving Club ticket or 3 for \$5 and start of the Tour De Tarwin Fishing Classic (Day 1)
\$5 Adults and Kids free
12 noon – Tour de Tarwin Art Show opens at the Tarwin Lower Mechanics Hall.

Easter Saturday:

11th Annual Tour de Tarwin Bike/Walk Tour & Picnic, and Tour De Tarwin Fishing Classic (Day 2). Remember if you're going in the Tour to join in the fun and perhaps even form a team or decorate your Bike. (Participation is \$25 Family \$10 Adults \$7 Kids includes Lanyard & giveaways)

Easter Saturday:

Football – 3rd Annual Tour De Tarwin Shield – fixture match between Tarwin Sharks versus MDU.

Easter Sunday

Inaugural Tour De Tarwin Beach Run – Join us on Easter Sunday morning for our first Tour De Tarwin Beach Run – great fun for all the family. See you on Beach 1 Venus Bay
(Participation is \$25 Family \$10 Adults \$7 Kids includes a free Showbag and entry to our Easter Egg Hunt!)

Easter Sunday afternoon – Family Bare Foot Bowls and BBQ at Tarwin Lower Bowls Club and Tour De Tarwin Fishing Classic (Day 3)

John O'Reilly
0401414800

Tour de Tarwin media Liaison Officer
Crystal James
0438822880 Event manager.



TOUR DE TARWIN EASTER FESTIVAL 2017

Now in its 11th year, the Tour De Tarwin Easter Festival is South Gippsland's largest fundraiser for local emergency services. Our Walk, Run, Ride event on Easter Saturday, Beach Fun Run on Easter Sunday, 4-day Fishing Classic and our 'U Beaut' raffle all raise vital money for the CFA in Tarwin Lower, Venus Bay Surf Life Saving Club and CERT to purchase equipment, vehicles and communication devices to help keep our communities safe.

Our all ages events are fun and healthy. Bring the whole family and join in the fun.

A huge thank you to our Committee members, volunteers and the Venus Bay Community Centre for making this festival possible.

EASTER SATURDAY 15 APRIL
11th Tour De Tarwin Walk, Run or Ride

EASTER SUNDAY 16 APRIL
Inaugural Tour De Tarwin Beach Run

Follow TourDeTarwin on Facebook for event news
Avoid the queues and register online tourdetarwin.com.au

Unique. The way travel should be



Travel Managers
As individual as you are

Kirra Moon-Curry
Personal Travel Manager

M: 0403 190 234
E: kirra.moon-curry@travelmanagers.com.au
travelmanagers.com.au/KirraMoon-Curry



Evans Petroleum Gippsland Pty Ltd
Phone (03) 5662 2217
Fax (03) 5662 225
Depots:
Leongatha Traralgon Sale

www.evanspetroleum.com.au



Book now

The Rustic Cacao Factory and Cafe

LochVillage

We use the old-fashioned way of making Handcrafted Drinking Chocolate with raw cacao and Australian spices.

Enjoy a "free tasting" at the Cafe.

The Rustic Cacao Factory and Cafe also offer tasty meals on the barbecue and you can give your lunch a kick with any of 20 varieties of the World's hottest chilli sauces.

Open: Friday, Saturday, Sunday and Public Holidays
10:00 am to 4:00 pm ~ Booking phone: 0478 899 821

Our people - Know your Councillors - Bunurong Ward

Cr Les Larke



Contact:

Landline:
(03) 5671 2121

Mobile:
0428 747 461

Email: les.larke@basscoast.vic.gov.au

Cr Larke has vast experience and interest in the accountancy and financial planning professions, both in Australia and internationally, working in global, national and regional settings in public practice for more than 25 years.

He has consulted broadly across the private, government and not-for-profit sectors, and in a wide range of industries and professions, and brings finance, governance, audit, risk management and a range of other commercial and change leadership skills to benefit the Bass Coast Shire community.

During his career in public practice, Cr Larke was appointed General Manager State Trustees to lead that entity's transition from the public sector through commercialisation and ultimately establish the Government of Victoria's first model for conversion of public sector organisations to state owned enterprise standing. Les is a Fellow Certified Practising Accountant – CPA Australia.

Cr Brett Tessari - Deputy Mayor



Contact:

Landline:
(03) 5671 2122

Mobile:
0428 857 845

Email: brett.tessari@basscoast.vic.gov.au

Cr Tessari is a third generation local who is very passionate about the Bass Coast community and where we live.

He lives with his wife, Leanne, and together have raised three children who have all grown up and been educated in the Shire.

Cr Tessari is an active community member, having been President of the Wonthaggi Power Football Netball Club for five years and a member of the Wonthaggi Relay For Life Committee, presiding as Master of Ceremonies at the event for the past two years.

He was also involved in the Centenary of Wonthaggi, where he was also Master of Ceremonies for the event at the State Coal Mine. Cr Tessari has worked across the Shire on Phillip Island, Inverloch and currently in Wonthaggi.

As a Councillor for Bunurong, Cr Tessari intends to work hand-in-hand with the community on issues that concern us all.

Cr Julian Brown



Contact:

Landline:
(03) 5671 2123

Mobile:
0429 130 472

Email: julian.brown@basscoast.vic.gov.au

Cr Brown has a life-long connection with Bass Coast and is the fourth-generation of his family to reside in the Shire. One of his grandfathers worked in the State Coal Mine in Wonthaggi as a coal miner and his father has had a long involvement in local and state government. Cr Brown grew up and attended primary school in Wonthaggi, and studied at Newhaven on Phillip Island before moving to Melbourne to finish his VCE studies. He spent time volunteering in South Africa before studying history, politics and languages at university. For a number of years, Cr Brown also lived in Japan where he worked as an English teacher and studied martial arts. He returned to live in Bass Coast in 2012 and established a small business teaching martial arts. Cr Brown wants to see Council taking a balanced approach that gives due consideration to communities, the environment and the local economy.

For further information on any of our Councillors, visit the council website <http://www.basscoast.vic.gov.au/Council/>

Burgess Motors
Automotive Repairs
Phone 0455 544 194
Lot 2 Fact. 4 Grantville Dr.
Grantville Vic. 3984

Cranbourne Exhaust Pty. Ltd. (Inc. in Vic.) trading as
FASTFIT
CAR CARE
Standard, custom and performance exhaust systems
Complete brake and suspension service
Full vehicle repair service, log book servicing
Ted Watson
222 High Street, Cranbourne 3977
Telephone: 5996 4555



Bass Concreting and Excavation
Your local contractor No job too big or small
Excavators, bobcat, tippers, all tickets and
insurance
Give Wayne a call for a quote 0433 802 212



Block Slashing Russell Sanders
0418 549 499





POET'S CORNER

Submissions welcome
editor@waterlinenews.com.au

Thoughts

There are thoughts too hard to say,
 too deep to brave the light of day.
 Submerged,
 they will not risk
 the flinty force
 of censure.

Hidden, they hold close
 our inmost selves;
 the real
 the true
 the fragile.

As the secret 'berg, one eighth
 is raised, the rest
 beneath the surface
 safely lays.

Dulcie Stone

HAIKU

Thoughts in miniature
 A haiku is untitled and
 unrhymed.

A seasonal word or reference
 associated with nature should
 appear in the haiku, and contrasting
 images may be used. Usually the first line
 stands alone while the second and third
 connect to give an aspect of that image.

Perspective

tree's roots and crown stretch
 bringing earth's dew and sun's heat
 to union in fruit.

summer cicadas
 shred somnolent afternoons
 with their own purpose.

the many-hued fire
 comforts warmly when contained,
 threatens horror free.

sun-drenched sere paddocks
 patient earth cradles her seeds
 till rain wakens them.

Rebecca Maxwell

Haiku Group, Society of Women Writers, Victoria



Next month we conclude Rebecca
 Maxwell's collection of Haiku from the
 Haiku Group, Society of Women Writers,
 book, Thoughts in Miniature.
 With special thanks to Meryl Brown Tobin.
 Email: h-mtobin@bigpond.com

We have held over some of our
 regular features to publish this
 poem for Anzac Day

Editor

The Anzac on the Wall

By Jim Brown



I wandered thru a country town, 'cos I had
 some time to spare,
 And went into an Antique Shop to see what
 was in there.
 Old Bikes and Pumps and Kero lamps, but
 hidden by it all,
 A photo of a soldier boy An Anzac on
 the Wall.

'The Anzac have a name?' I asked. The old
 man answered 'No',
 The ones who could have told you mate,
 have passed on long ago.
 The old man kept on talking and, according
 to his tale,
 The photo was unwanted junk, bought from
 a clearance sale.

'I asked around,' the old man said, 'But no
 one knows his face,
 He's been on that wall twenty years...
 deserves a better place.
 For someone must have loved him, so it
 seems a shame somehow.'
 I nodded in agreement and then said... 'I'll
 take him now.'
 My nameless digger's photo, well it was a
 sorry sight
 A cracked glass pane and a broken frame ...
 I had to make it right
 To prise the photo from its frame I took care
 just in case,
 Cause only sticky paper held the cardboard
 back in place.
 I peeled away the faded screed, and much to
 my surprise,
 two letters and a telegram, appeared before
 my eyes
 The first reveals my Anzac's name, and
 regiment of course
 John Mathew Francis Stuart ... of
 Australia's own Light Horse.
 This letter written from the front... my
 interest now was keen;
 this note was dated August 7th, 1917

'Dear Mum, I'm at Khalasa Springs, not far
 from the Red Sea
 They say it's in the Bible ... looks like a
 Billabong to me.
 'My Kathy wrote, I'm in her prayers...she's
 still my bride to be,
 I just can't wait to see you both, you're all
 the world to me.
 And Mum you'll soon meet Bluey, last
 month they shipped him out
 I told him to call on you, when he's up and

about.'

'That bluey is a larrikin, and we all thought
 it funny,
 He lobbed a Turkish hand grenade into the
 Co's dunny.

I told you how he dragged me wounded;
 in from no man's land.

He stopped the bleeding, closed the wound,
 with only his bare
 hand.'

'Then he copped it at the front, from some
 stray shrapnel blast,
 It was my turn to drag him in, and I thought
 he wouldn't last.

He woke up in hospital, and nearly lost his
 mind

Cause out there on the battlefield, he'd left
 one leg behind.'

'He's been in a bad way Mum, he knows
 he'll ride no more

Like me he loves a horse's back, he was a
 champ before.

So Please Mum can you take him in, he's
 been like my own brother
 Raised in a Queensland orphanage he's
 never known a mother.'

But Struth, I miss Australia Mum, and in my
 mind each day

I am a mountain cattleman, on the high
 plains far away.

I'm mustering white-faced cattle, with no
 camel's hump in sight,

and I waltz my Matilda, by a campfire every
 night

I wonder who rides Billy...!! I heard the
 pub burnt down!!

I'll always love you... and please say
 Hooroo, to all in town'.

The second letter I could see, was in a lady's
 hand,

An answer to her soldier son, there in a
 foreign land.

Her copperplate was perfect, the pages neat
 and clean

it bore the date, November 3rd 1917.

'T'was hard enough to lose your Dad,
 without you at the war
 I'd hoped you would be home by now...
 each day I miss you more'

'Your Kathy calls around a lot, since you
 have been away,

To share with me her hopes and dreams,
 about your wedding day.

And Bluey has arrived... and what a
 godsend he has been

We talked and laughed for days, about the
 things you've done and seen'

'He really is a comfort, and works hard
 around the farm,

continued page 29

Writing

The Anzac on the Wall continued

I read the same hope in his eyes, that you won't come to harm.
Mc Connell's kids rode Billy, but suddenly that has changed.
We had a violent lightning storm, and it was really strange.'
'Last Wednesday, just on midnight, not a single cloud in sight, It raged for several minutes, it gave us all a fright.
It really spooked your Billy ... and he screamed and bucked and reared,
And then he rushed the sliprail fence, which by a foot he cleared'

'They brought him back next afternoon, but something's changed I fear,
It's like the day you brought him home, for no one can get near.
Remember when you caught him, with his black and flowing mane?
Now Horse Breakers fear the beast, that only you can tame,'
'That's why we need you home son.....
Then the flow of ink went dry.....
This letter was unfinished... and I couldn't work out why.

Until I started reading, the letter, number three
A yellow telegram delivered news of a tragedy.
Her son killed in action... Oh! What pain that must have been,
the same date as her letter... 3rd November 1917
This letter which was never sent, became then one of three.
She sealed behind the photo's face ... the face she longed to see.

And John's home town's children, when he went to war,
Would say no greater cattleman, had left the town before.
They knew his widowed mother well, and with respect did tell,
How when she lost her only boy... she lost her mind as well.
She could not face the awful truth, to strangers she would speak

"My Johnny's at the war you know... he's coming home next week."

They all remembered Bluey, he stayed on to the end.

A young man with wooden leg, became her closest friend.

And he would go and find her when she wandered, old and weak,
and always softly say... 'Yes dear ... John will be coming home next week.'

Then when she died, Bluey moved on... to Queensland some did say.

I tried to find out where he went, but don't know to this day.

And Kathy never wed, a lonely spinster... some found odd.

She wouldn't set foot in a church ... she'd turned her back on God.

John's mother left no Will, I learned, on my detective trail.

This explains my photo's journey, of that clearance sale.

So I continued digging, cause, I wanted to know more.

I found John's name with thousands, in the records of the war.

His last ride proved his courage... a ride you will acclaim

The Light Horse Charge at Beersheba of everlasting fame.

That last day in October back in 1917,
at 4pm our brave boys fell ... that sad fact I did glean.

That's when John's life was sacrificed, the record's crystal clear.

But 4pm in Beersheba is midnight over here.....

So as John's gallant spirit rose, to cross the great divide,

Were lightning bolts back home, a signal from the other side?

Is that why Billy bolted, and went racing as in pain...?

Because he'd never feel his master, on his back again...!

Was it coincidental...? Same time... Same day ... Same date...!!

Some proof of numerology... or just a quirk of fate...?

I think it's more than that you know, as I've heard wiser men,
Acknowledge there are many things, that go beyond our ken

Where craggy peaks guard secrets, neath dark skies torn asunder,
Where hoof beats are companions, to the rolling waves of thunder

Where lightning cracks like 303's, and ricochets again,
Where howling moaning gusts of wind, sound just like dying men
Some Mountain cattlemen have sworn, on lonely alpine track,
They've glimpsed a huge black stallion ... with Light Horseman on his back.

Yes Sceptics say, it's swirling clouds, just forming apparitions.
Oh No, My friend you can't dismiss all this as, superstition.

The desert of Beersheba ... or a windswept Aussie range,
John Stuart rides on forever there... I don't find that at all strange.

Now some gaze upon this photo, and they often question me,
and I tell them a small white lie, and say he's family.

'You must be proud of him.' they say ... I tell them, one and all,
That's why he takes ... the pride of place ...

The Anzac on the Wall. Lest We Forget

Footnote:

I was sent this poem when I was looking for my Gallipoli ancestors.
Libby Skidmore Bass
Valley Historical Society.



Paint & Sip CORONET BAY

Fun • Relaxing • Inspirational

Absolutely NO experience necessary..!

- Create a painting in just one 3 hour session
- Choose an image from our extensive catalogue or BYO painting idea • All materials supplied
- BYO drinks • Groups welcome • Max. 12 per session

Catalogue & Bookings: www.paintandsip.com.au

Email: chris@paintandsip.com.au


Bass Valley Handyman
No job too big or small

Scott Longden
We always call you back

www.bassvalleyhandyman.com.au
slongden@bassvalleyhandyman.com.au

0419367705

Servicing Bass Coast and South Gippsland

Our people

Tim's Story

E.H.M (Tim) Ealey M.Sc. Ph.D. OAM

Tim Ealey was recently asked to write a story on his life so far, for one of his former School's, magazine. This is extracted from what he wrote.

Tim got into Sydney University with the lowest possible marks, five B's, thrived and got into Honours but escaped and went to Heard Island in the Antarctic.

He was too young for the war, so this was a great chance to grow up.

Tim and his biologist mate Graham did all the field work surveying the birds and counting elephant seals, all 80,000 of them. Back packing in summer and sledging in winter, their surveys led to Heard Island ultimately being made a sanctuary.

They sledged right to the end of the island to Split Bay Crossing, a huge glacier which was later named Ealey Glacier. Happily it is fed from a large snow field on Mt. Big Ben, and has not diminished at all so far. The CSIRO considered that because he had survived the loneliness of 14 months on Heard Island, he would be suited to work on Hill Kangaroos (Euros) in the Pilbara at a lonely research station, Abydos, 50 miles from Marble Bar with daily temperatures of 40 degrees.

Tim got married and worked there for six years, getting a Ph.D. and two lovely kids in the process.

In 1960 he was given a job at Monash University as Senior lecturer in Zoology. This evolved into a Masters degree M.Env.Sc. set up in 1973 despite much opposition from the University academics. This then became the Graduate School of Environmental Science of which he became the Director.

The course produced 800 graduates who obtained many influential positions in Government and Industry.

During his time at Monash, he also worked with the United Nations, Environmental Programme and did a lecture tour of Nankai University in China.

He worked for Channel 7 for six years on a program called Dr. Tim, about ecology and conservation.

He helped set up an Environmental Living Zone and a Conservation Cooperative in the Christmas Hills area, north of the Yarra river. Both are thriving today.

He also served on a number of environmental planning committees and helped the Walpiri Tribe with land rights claim to the Tanami Desert with the skin brother name of Tim Tchapanaka. He discovered he could paint in 1960 and has a couple of fairly successful exhibitions. He doesn't paint any more but has run U3A classes on landscape painting. He retired from Monash University in 1986 and was awarded the Robyn Boyd Award for contributions to "living Environment". Also the Victorian Education Award for contributions to environmental education, then managed to lose a considerable amount of superannuation supporting environmental research projects.

Tim, and wife Laura, moved to Coronet Bay in 1998 and he joined the Seagrass Partnership, spending over ten years growing seagrass and more recently thousands of mangroves.

He had ten schools growing mangroves and planting them.

The kids called him Dr. Mangrove and on the basis of this he was awarded the "Hero of Westernport Award". "Environmental Ambassador of the Bass Coast Shire". "Commonwealth Coastal Custodian". "Order of Australia", and "U.N Association Environmental Day Award".

Canberra rated him as a "National Treasure and sent out a sound engineer to do a seven hour interview.

Tim turned 90 on March 29 and has decided to retire after finishing his research on barnacles which inhibit our young mangrove plants.

Tim's wife, Laura, administered nine homes for homeless youth before she met Tim.

Tim dragged her to Victoria to live in his mud house he had built in Kangaroo Ground where she immediately painted the timber green!!

It was her idea to move to the coast.

At Corinella she set up a strength training group for oldies called the Leadbeater Lifters in 2002 after doing nearly a year's

training as a gym instructor. In 2008 she trained as an instructor in Tai Chi leading to very successful programme at Coronet Bay. She also served on the Bass Coast Health Council.

For the last five years she has been the Grand Commander of the Australian Federation of Freemasonry for Men and Women. Trips to the Paris headquarters and around Australia have taken a great physical toll and she is now looking forward to a quieter life.



Tim celebrated his 90th birthday at a gathering of family and friends at the Coronet Bay Hall on April 2.

The celebration also doubles as a 'Farewell' with Tim and Laura having sold their home in Coronet Bay and heading to South Australia at the end of June, when Laura gets back from her final Lodge conference in Paris.

They are reluctantly leaving Coronet Bay to give her some time with her family in South Australia.

However both say they will never forget our friends at Coronet Bay.....never!!

Tim and Laura have made an outstanding contribution to the community over the past 19 years and will be sadly missed.



Gordon Chase - Chase Computers (03)56787097 or 0430168345

www.esahc.com
gordon@esahc.com



**Bass Coast
People's
Choice**
**TRADES & SERVICES
2013 2014 2015 2016**

Computer and related hardware
Software provision and installation
Network and internet connection
Email configuration

Preventative maintenance
Repair and upgrade
Website setup, maintenance and support
IT support when you need it

**WE COME TO YOU
NO FIX - NO FEE***

*conditions apply

**Chase
Computers**

Greg Hunt says



Greg Hunt
MP
Federal
Member for
Flinders
Minister for
Health.
Minister for
Sport.

Like many of you I am looking forward to the school holiday period and spending time with my children and enjoying family time. They grow up so fast and we really have to treasure every moment with them. I am pleased that we have seen an additional 200,000 children vaccinated during the first year of the No Jab, No Pay program. This requires all children to be immunised or undergoing an immunisation program in order to attend childcare and to receive family payments.

It's vital that children are covered for measles, mumps, rubella, whooping cough. Being protected is critical.

This is a tough policy because it's about public health and the safety of our beautiful kids. Most importantly, if your child is covered then other kids are covered as well. I encourage all parents across the Bass Coast region to ensure their children are vaccinated.

We are also taking action to enable the safe and legal distribution of medicinal cannabis products for adults and children suffering from painful and chronic conditions.

We recognise that access to medicinal cannabis is of vital importance to many

Australians. But we must ensure this is done in a way that is safe and responsible. I look forward to working with members of the recently established Australian Advisory Council on the Medicinal Use of Cannabis to ensure medicinal cannabis is available for those who need it.

I will join you all in paying respect to our service men and women at local Anzac Day services across the electorate on April 25. This is a time for us all to reflect on the fellowship and courage of our defence personnel, past and present.

On Anzac Day we remember with affection the courage of our fellow Australians and the value of mateship and camaraderie. These are values we uphold and preserve. I would like to wish you all a safe and happy Easter with your loved ones. In particular, I encourage people travelling over the Easter holiday period to take caution on our roads so everyone arrives safely at their destination.

If I can be of assistance to you in any way please feel free to contact me:

Greg Hunt

**4/184 Salmon Street (PO Box 274)
Hastings 3915**

**Email: greg.hunt.mp@aph.gov.au
Tel: (03) 5979 3188**

Website: www.greghunt.com.au



Saturday April 22 10am - 3pm



S&P

Heavy Mechanical

ON SITE & WORKSHOP SERVICE

- ⚙️ **Cars & trucks**
- ⚙️ **Mechanical, electrical and hydraulic repairs**
- ⚙️ **Fleet maintenance**

24 HOUR BREAKDOWN SERVICE

5678 8472 0488 003 129

**FACTORY 3 | 6-10 GRANTVILLE DRIVE
GRANTVILLE**

Cr Clare Le Serve
Western Port Ward

**M: 0448 083 286
T: 03 5671 2155**

**clare.leserve@basscoast.vic.gov.au
www.basscoast.vic.gov.au**

**Bass Coast Shire Council Office
76 McBride Avenue, Wonthaggi 3995
T: 1300 226 278**



Greg Hunt
FEDERAL MEMBER
For FLINDERS

**Phone:
(03) 5979 3188**

**Email:
greg.hunt.mp@aph.gov.au**

**Website:
www.greghunt.com.au**

Working together

- getting results



TONY SMITH
Corinella
0487 457 163

- **Active Home and Commercial Cleaning**
- **Specialising in Rental Property's**
- **Steam Cleaning of Carpets**
- **Car Interiors**
- **All general needs**
- **Prompt and reliable**
CALL TONY NOW



BASS COAST STOCKFEEDS

**Bass Coast Stock Feeds
& Pet Supplies**

**Something for every pet or farm animal,
furry or feathered**

**Shop 1&2 Grantville Drive Grantville
5678 8933 - 0430 537 392**

K9 Pawfection

**Dog Wash, Grooming
& Clipping Service
Coronet Bay**

Available by Appointment

**Phone Sandra on
0413 209 709**



Sports & Leisure

CORINELLA BOWLING CLUB Inc. 2016/17 SEASON

22 Balcombe St Corinella.

T: 5678 0497.

Follow & Like us on our Facebook page - Corinella Bowling Club on Westernport or search for www.facebook.com/CBC.Westernport

Corinella Bowling Club Winter activities from May to August.

Contact Jacquie Carter – 5678 0596

Enid Johnston – 5678 0118



FISHING with Craig Edmonds



Over the Easter weekend we will be running a Fishing competition with 100% of the entry fee being donated to the Good Friday Appeal.

There will be categories for heaviest Squid, Flathead, Salmon, Whiting, Gummy and there will be categories just for junior anglers, Squid, Whiting and Flathead.

We have had some extremely generous support from the local businesses and as well as the category prizes we will have lots of vouchers you can win just for entering. We will have regular lucky angler draws over the weekend and a full list of the prizes and giveaways are available in store or on our Facebook page. You can fish every day or just one day, from the land or boat. We are hoping to get around 100 entries to raise as much as possible for this very worthy cause. So, let all your friends and family know and enter for a fun weekend.

More information and entry forms will be available on our shop Facebook page, web site and in store and you will be able to sign up any time before the comp but must be entered before 12pm on Good Friday. Enter early as the first 50 people go into a special draw for a pair of Uglyfish sunglasses.

Some very good conditions over recent weekends saw plenty of boats out trolling around chasing those now elusive tuna. They have gone a bit shy and not necessarily

gone altogether as a few customers told me they still sounded some reasonable fish just couldn't get them interested at all.

The glassy conditions saw a few giving the Kingfish a go and several were caught but most only small. There were a couple of reasonable size ones but no real reason why or where they were caught. Many of the kingfish reports we have received lately were from those trolling small skirted lures for tuna and the kings were more of an accidental catch. The bigger ones came from those who went to target them using live baits.

The best of the reports came from the area between pyramid rock and the George Kermode wreck with one we know of from the Pinnacles.

Still plenty of bait offshore in slimmeys both big and small, yakka's and couta with plenty of arrow squid down deep on the bottom.

We have had several reports about large amounts of krill again with salmon boiling up around the krill but not really interested in taking lures. Those chasing flathead didn't seem to have too many problems finding a good feed, although it was probably a bit harder than the last couple of weeks and you needed to do a bit more work and go back over a patch when you found them. There have been some good pinkies this week offshore as well, maybe a sign of them leaving the bay.

Whiting are being caught but working out the right time has again been the problem with those fishing the early morning doing better consistently. This week however with a bit of cloud cover there has been several reports from even the middle of the day. On the very sunny bright days we didn't have a single report from during the day and any reports came from both ends as the sun was just coming up or going down. Cleland bight produced a few fish but the best of the reports came from the top end of the bay towards the bass river and reef island. We had a few reports from the other side at Ventnor from our kayak customers and the size of the whiting was slightly better there as well.

Still several pinkies although not as many of the very small ones reported and some quality as well over the 40cm. The pinkie

reports were random in where they were caught and I would struggle to point you to the exact place to find them. The corals were probably the only spot consistent from the reports trouble was it was the smaller ones caught for the week. There was also 100's of undersize gummies and schoolies and the usual flathead.

If you are fishing in the bay make sure that you have a light rod set up with a small lure for salmon sitting in the rod holder because there have been some schools of salmon moving through the bay. There have also been schools of yakka's and slimmeys mackerel that have been big enough to take a small lure, 15g to 25g in white the best from the reports. There have been a lot of slimmeys and yakka's from the jetties around the island mostly in the evening and with a sabiki rig you can get a bucket of quality bait in a very short time, but just remember there is a bag limit on these fish. Calamari continue to be frustrating because of their inconsistency from both land and from the boats.

There doesn't seem to be any logical reason for it with plenty of possibilities, the most popular is the number of predators, couta and pike mainly in the bay now making the calamari very timid. There doesn't appear to be a problem with numbers because we are still getting customers coming in giving us reports that they bagged out.

I have had several reports from customers fishing on the Cowes side in boats and those fishing the San Remo jetty seeing huge schools of small calamari travelling past so I think like all fishing something will set them off again and in no

time, we will be getting plenty of reports again.

HAPPY
EASTER

Jim's
BAIT AND TACKLE

(03) 5678 5462
151 Marine Parade, San Remo Vic 3925
www.jimsbaitandtackle.com.au

WHELAN ELECTRICS

All types of Domestic and Commercial Installations
LED LIGHTING
SAFETY SWITCHES
SWITCHBOARD UPGRADES
PHONE POINTS - T.V
POINTS
FANS
POWER POINTS
SMOKE ALARMS

0439 746 856

REC 25541

CORY WHELAN

"A" Grade Electrician
whelanelectrics@gmail.com

PETER C WEST
PLUMBING

Corinella

Small Job Specialist

40 Years Experience
Lic. No 22837

Phone 0419 307 615

UNDERSTANDING YOUR GARDEN

James Middleton

Buying Gardening Tools - Part 5



Pruning Saw

Another must have tool for any gardener is a pruning saw.

Sometimes plant

or tree limbs are even too

thick for loppers

and you need to break out the saw.

In theory, any old saw would do, they all cut wood, but garden pruning saws are designed to work best on living plants.

When living plants are cut, they secrete a sticky residue, or sap and this can cause difficulty for an ordinary saw. Pruning saws are designed with this in mind, made with either non-stick or low-stick teeth that will keep on cutting even when covered by tree sap.

Pruning saws also generally come with a curved handle. This makes getting in and around tree limbs easier which is important because, unless you have shaped your tree, it is often the most difficult to reach or most awkward limbs that you are trying to remove.

Another big bonus of a proper pruning saw over an ordinary saw is size and portability. Pruning saws often fold (though not always) and this is beneficial for 3 reasons;

1. Takes up less space.
2. Are safer, you won't risk cutting yourself reaching into your gardening tools.
3. Helps better protect the teeth, helping the tool to last longer.

What to look for in a pruning saw

The first tip for anyone looking to buy a pruning saw is to spend that little bit extra and get one that folds up and get one which has a replaceable blade. Though pruning saw blades can generally be sharpened, eventually a new blade will be needed. If the blade cannot be replaced, then you will have to spend big again on a new tool. However if the blade is replaceable, this will significantly cut down

the long-term cost of maintaining your pruning saw.

A relatively recent improvement to the pruning saw range are blades called tri-cut. Basically, these are sharpened on 3 edges, like a triangle, and reportedly cut twice as fast. I have never owned a pruning saw with this kind of blade but every review I have read has strongly recommended them, so I'll recommend you look for a pruning saw with a tri-cut blade also. Once again, try and stay away from pruning saws with lots of plastic pieces. Plastic makes the tool cheaper, but it is also rare for tools with plastic to go the distance and last many years. In fact in many cases, manufacturers make tools out of plastic because they won't last for years, forcing you to buy another tool in a couple of years. It makes sense for manufacturers, they need the business, but it is a shame that there are fewer and fewer top quality tools.

Cost of a pruning saw

Pruning saw range in cost from about \$20 right up to \$150. To get a folding pruning saw with a tri-cut blade you are probably looking around the \$40 mark. Spending \$60-70 will get you a top notch tool, spending \$30-40 will get you a serviceable tool. Spend less than \$30 and you are probably getting a tool that will last a season or two before you have to spend another \$20-\$30 on a new tool.

May Gardening Tips

May is the last month of autumn, your last month of gardening before winter really starts to hit. If you have a lot of delicate plants in pots out enjoying the summer and autumn sun, now is the time to find a more sheltered spot for winter.

Many pot plants are fine outside during winter, but make sure your pots have good drainage, you don't want the roots to be soaking in water 24/7 as this can cause the roots to rot.



Potted plants do need a good amount of water, which self-watering pots do well, but they also need to have good drainage. Make use of the fallen autumn leaves around your garden. Pile them up together in a compost bin or a corner of your garden so that they can break down and then be used as mulch or compost later in the year. Some of the best gardeners I know spend very little on mulch and compost because they use the natural seasons their gardens go through, and the waste produced (such as leaves), to produce good, rich mulch and composts themselves. Organic matter makes a really big difference towards growing a healthy garden so why waste the nutrients and organic matter from dropped leaves?

May is also your last chance to get spring bulbs in. Try and get them sown within the first two weeks of May for best results this spring if you have not put them in during April.

Early May is also a great chance to plant vegetables so that you get a bumper winter crop of



vegetables throughout the winter months. If you leave planting till June, you won't start to see the produce until July or even August, depending on what you are planting.

Plant some broccoli, carrot, spring onions, or winter lettuces.

If you want to plant some citrus trees, you are not too late. Citrus trees, and trees in general, really like to be planted in Autumn because it means they usually receive a good mix of sun and rain so that they can really develop their root systems, then get the rains of winter before they have to cope with the hot sun of spring and summer.



<http://aussiegreenthumb.com/>



GRANTVILLE MITRE 10

Open 7 days
Mon - Fri 7am-5pm
Saturday - 8am-3pm
Sunday 9am-3pm
Bill Humphrey
& Gary Skinner
5678 8213

Bass Highway Grantville

Advertisers Index

APRIL ADVERTISERS INDEX

Advertiser	Page
Access Consciousness - The Bars	7
Alex Scott Real Estate - Grantville	2
AP Progressive Plumbing	2
Bass Coast Stockfeeds	31
Bass Concreting & Excavation	27
Bassine Specialty Cheeses (Farm Shop)	13
Bass Valley Handyman - Scott Longden	29
Bendigo Bank	36
B.J's Mowing & Garden Maintenance	34
Burgess Motors - Grantville	27
Chase Computers	30
Cut n Edge Lawn & Garden	34
Evans Petroleum	26
Fast Fit Car Care & Exhaust	27
Flyaway Screens	24
Focus on Lifestyle - Mobility Aids	14
Grantville Medical Centre	14
Grantville Mitre 10 - Hardware	33
Grantville Pirate Festival - Maru Park	1, 5 & 31
Happenin' Hair & Beauty - Grantville	2
Health & Trauma Counsellor - Ella Hayes	15
Hunt, Greg - Federal MP for Flinders	31
Hypnotherapist - Kathryn McKean	35
James McConvill & Associates - Legal	4
Jim's Bait & Tackle San Remo	32
Kernot Food & Wine Store	13
Kirra Moon-Curry, Travel Managers	26
K9 Pawfection - Dog Grooming	31
Le Serve, Clare - Local Ward Councillor	31
Lang Lang Funeral Services	1
Massage Therapist - Nici Marshall.	14
Minuteman Press - Printers	22
Nurse Practitioner - Deb Garvey	14
Newhaven College	3
Over 60 Travel Insurance	13
Paint & Sip - Art Classes	29
Paynter, Brian - State MP Bass	35
Peter. C. West Plumbing	32
Right Choice Mortgage & Leasing	35
Rustic Cacao Factory & Café	26
Safflower Chinese Medicine	15
S&P Heavy Mechanical - Grantville	31
Sanders, Russell Contractor & Block Slashing	27 & 34
Smith, Tony - Commercial & General Cleaning	31
Stihl Shop - Lang Lang	34
Stockdale & Leggo (Judith Wright) Cows	17
Stockdale & Leggo -Grantville & Koo Wee Rup	36
Sunscape Electrical - Solar installations	2
TV Guy - Antenna Installation Specialists	22
Van Steensels Timber & Hardware	20
Veterinary Clinics - Inverloch, San Remo & Wonthaggi	24
Vinyl Layer - Ivan Meddings	1
Whelan Electrics	32
Wings & Fins Restaurant	35

RUSSELL SANDERS

Contractor - 0418 549 499

**4WD Backhoe & Tipper
Slasher Hire
Blocks Slashed or cleared
Driveways built or repaired
Site cuts and excavations
Hydraulic grader blade**

643 Densley Road Woolamai 3995

Phone: 5678 2373

Email: russellsandersbackhoehire@gmail.com



**Make your business easy to find.
Advertise in the next issue of The Waterline News.
editor@waterlinenews.com.au**



BJ's Mowing & Garden

For all your lawn & gardening needs

- Household Lawns and Larger
- Green waste removal
- Weed spraying
- Friendly prompt service
- Obligation free quotes
- Competitive rates
- Fully Insured
- Servicing all areas from Grantville, Corinella and Coronet Bay to San Remo & Phillip Island

**Call now
0414 463 395**

Brendan Dwyer



Cut n Edge Lawn and Garden

Samantha White
0422 332 792

445 Korrine rd
Glen Alvie 3978
ABN: 88 774 766 036

Cut n Edge Lawn and Garden

- Catcher mower and/or ride on mower
- Whipper snipping
- Maintaining gardens, weeding, trimming, planting, mulching ect
- Weed removal in lawns either by hand or chemical spray
- Great affordable rates and service with a smile
- Public liability insurance

**TRIM A
140M LONG HEDGE
ON A SINGLE CHARGE**

\$379

**INCL BATTERY & CHARGER
[ONE BATTERY POWERS ALL]
SKIN ONLY \$279**

HSA 56

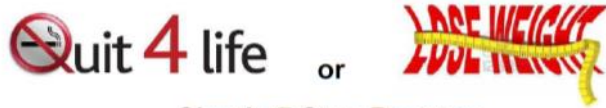
**Stihl Shop Lang Lang
2 Cambridge Street LANG LANG 3984 Ph: 03 5997 5691**

STIHL

*Performance example using cutting 140m of 2 metre high hedge with AK 20 battery

Hypnosis

Change Your Life Today



Simple 7 Step Program

Total Package \$350

Rapid Results	Highly Effective
Safe & Stress Free	Tailored for You
Renewed Energy	Healthy Quality of Life

Call

Kathryn (Hypnotherapist)

0407 676 898

Corinella

www.reikieternalenergy.com.au

Also Available

Stress Reduction

Performance Enhancement

Rid Bad Habits

Research shows that Hypnosis is one of the most effective ways to become a non-smoker for life or lose and maintain your ideal Weight.



Mortgages and Leasing

Located in LANG LANG and KOO WEE RUP

We also offer a MOBILE mortgage broking service; we can come to you at a time most convenient to you, including evenings in your home.

Have you reviewed your Home Loan in the last 3 years?

Did you know our service to you is FEE FREE*



Contact our friendly team for your Home Loan Health Check.

Just answer 6 easy questions and we can provide a QUICK COMPARISON to show you how competitive your mortgage is.

Ph 03 5977 2024

* There is no need for us to charge a fee as we receive a commission from the lender that you choose. This commission is not added to your loan. Our service is at a cost to the lenders and not yourself.



FRESH CRAYFISH SALES

Tooradin Airport,
3260 South Gippsland
Highway,
Tooradin, Victoria.

Book Now...

Phone (03) 5998 3600

Menu

Specialising in Flinders Island
Crayfish cooked fresh to your
liking.



Fresh Flinders Island Crayfish
available for purchase at Wings
and Fins Restaurant located at
the Tooradin Airfield.

Renowned Australia wide for
providing only the best in fresh
crayfish year round.

Sourced from across the
Tasman, Flinders Island is
surrounded by pristine,
untrammelled, deserted white
beaches with crystal blue
waters.

Harvested by local fisherman,
the fresh Crayfish are
transported weekly by aircraft
before being placed straight into
live Crayfish tanks.

The Crayfish are then
monitored and cared for before
being cooked to order.
Priding ourselves on providing
only the best in fresh Crayfish.

**2 Course Seniors Lunch
\$17.00**

www.wingsandfins.com.au

BRIAN PAYNTER MP STATE MEMBER FOR BASS



Please contact
my office if I can
assist you

**talk to
BRIAN**

brian.paynter@parliament.vic.gov.au

03 5672 4755

26 McBride Ave, Wonthaggi 3995
and 51 James St, Pakenham 3810

Authorised & Edited by Brian Paynter MP 26 McBride Avenue,
Wonthaggi 3995. Tel: 5672 4755 www.brianpaynter.com.au.
Funded from Parliament's Electorate Office and Communications Budget.

Gotta love loyalty.

Save up to 1.25% p.a. off a variable rate home loan.

When you choose a Bendigo Connect Home Loan package, we'll reward you with a big interest rate discount.

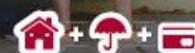
The more you bank with us, the more your discount grows.

And home loan discounts are just the beginning.

Special offers on insurance, credit cards, and even financial planning are just some of the loyalty benefits waiting for you.

Drop into your nearest branch at San Remo - 5678 5833, Cowes - 5952 3383 or Grantville - 5678 8773 to find out more.




Home loan discounts
are just the beginning.



San Remo District, Cowes and Grantville & District
Community Bank® branches

Credit provided by Bendigo and Adelaide Bank Limited ABN 11 068 049 178 AFSL/Australian Credit Licence 237879. Terms and conditions, fees and charges apply. All information including interest rates is subject to change without notice. Full details available on application. Lending criteria apply. S565755 (350487_y1) (27/03/2017)



Who would you trust to sell your home?

Don't let someone you wouldn't trust sell your property!

Our agents are committed to giving you an easy going and maximum value experience.

Stockdale & Leggo
Koo Wee Rup

5997 1899

Stockdale & Leggo
Grantville

5678 8700



**Stockdale
& Leggo**

real
estate