

FREE

# The Waterline News

Tooradin, Koo Wee Rup, Lang Lang, Nyora, Loch, Kernot, Grantville, Corinella, Coronet Bay, Bass, San Remo, Newhaven, Cowes, Phillip Island and French Island. Available by email and at [www.waterlinenews.com.au](http://www.waterlinenews.com.au)

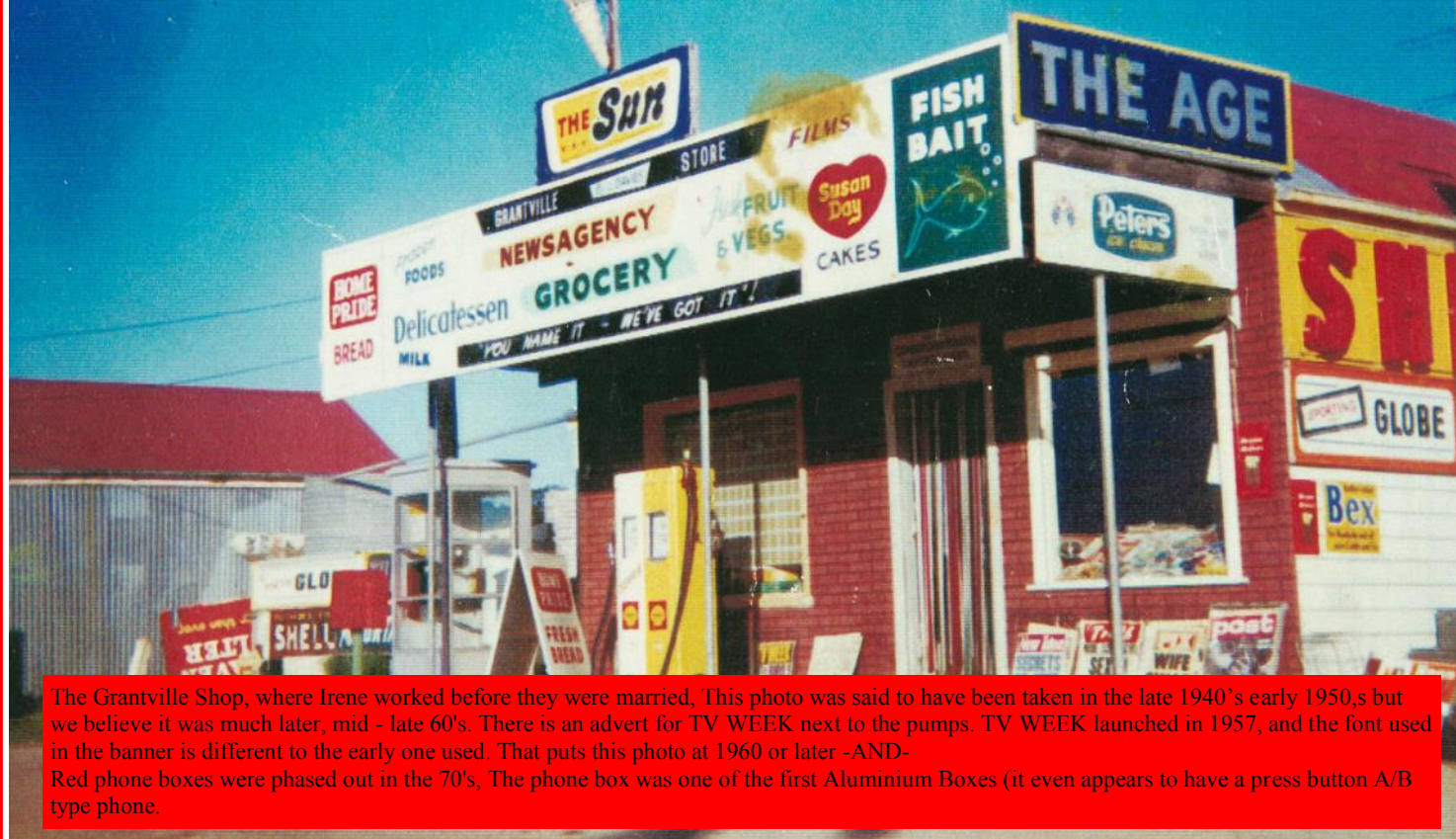


Volume 3

# 5

January 2017

## Meet The Wheatleys



The Grantville Shop, where Irene worked before they were married, This photo was said to have been taken in the late 1940's early 1950,s but we believe it was much later, mid - late 60's. There is an advert for TV WEEK next to the pumps. TV WEEK launched in 1957, and the font used in the banner is different to the early one used. That puts this photo at 1960 or later -AND- Red phone boxes were phased out in the 70's, The phone box was one of the first Aluminium Boxes (it even appears to have a press button A/B type phone.

### Meet Don & Irene Wheatley

This month we are very lucky to have the first of a series of feature articles written by Tony Hughes, profiling one of Grantville's Most popular couples, Don and Irene Wheatley. This article is based on an interview they gave to Tony and Irene Williams in December 2013.

Read their story in our Bass Coast Post in Print section on Page 21.

### Vinyl Layer

Expert laying of ....

Sheet Vinyl. Vinyl Tiles.

Vinyl Planks.

Laminate & Floating Timber Floors.

No job too small. Obligation free quotes.

Contact - I & S Meddings Flooring Contractors

0419 192 542



LANG LANG DISTRICT FUNERAL SERVICE

1 WESTERNPORT RD, LANG LANG

DIANNE COMBER - 0418 328 205

EMAIL: [dianne@ldfs.com](mailto:dianne@ldfs.com)

*'Compassion, Dignity & Respect with Quality Service'.*

- \* Personal Care - 24 hrs a day
- \* Servicing all areas
- \* Pre-paid & Pre-Arranged funeral plans available.

*'Let me be there to help you, in your time of need.  
We've been there and we care.'*



*From the mountains to the sea  
Alex Scott and staff providing*

**CLASSIC REAL ESTATE SERVICE** *Since 1886*



**Madelyne Golby**  
Sales Agent  
**Debbie Golby**  
Rental Manager  
**Janine Milton**  
Office Manager

**Gordon Waterson**  
Sales Agent  
**Jess Endres**  
Holiday Rentals  
**Robb Lawrie**  
O.I.E.C

**CALL OUR TEAM NOW FOR A FREE MARKET APPRAISAL**

**5678 8433 OPEN 7 DAYS**

A 1505 Bass Highway, Grantville W [www.alexscott.com.au](http://www.alexscott.com.au) E [sales@alexscottre.com.au](mailto:sales@alexscottre.com.au)

**ALEX SCOTT  
AND STAFF**

**AP**  
**PROGRESSIVE  
PLUMBING**

**Servicing all  
Westernport**

**Pensioner Discount  
On maintenance jobs**

**Call Adam  
0408 592 252**

**"ALL YOUR  
PLUMBING SOLUTIONS"**



**"Safflower Chinese Medicine, more choices naturally"**

Individual consultations and low cost community  
acupuncture sessions available to get your health on track.

**safflower**  
Chinese Medicine Dispensary & Clinic

Call now: 03 5956 7011  
[reception@safflowerclinic.com.au](mailto:reception@safflowerclinic.com.au)  
[www.safflowerclinic.com.au](http://www.safflowerclinic.com.au)



**ACCREDITED  
MASTER  
ELECTRICIAN**

**Clean Energy Council  
MEMBER**

## WHY CHOOSE US TO INSTALL YOUR SOLAR POWER?

- We are a local, family-owned and operated business, based in Lang Lang.
- We are fully qualified Master Electricians, working to the highest standards of the industry.
  - We have over eight years experience in the solar power industry.
- We have installed over 1000 systems across Victoria, ranging from small to over 100Kw.
  - We don't believe in cutting costs and use only high quality products for our systems.

Call Sam & Melanie Leighton on **03 5997 5998** to arrange a free quote,  
or visit [www.sunscapeelectrical.com.au](http://www.sunscapeelectrical.com.au) to find out more!



3.0Kw System, The Gurdies



6.0Kw System, Inverloch RSL



4.5Kw System, Coronet Bay



# The Waterline News - January

## FROM THE EDITOR'S DESK

[editor@waterlinenews.com.au](mailto:editor@waterlinenews.com.au)



## CORINELLA RATEPAYERS AND RESIDENTS ASSOCIATION

### 2015 COMMITTEE.

**President.** Lyndell Parker.

**Vice President.** Peter Tait.

**Secretary.** David Laing.

**Assistant Secretary.** Wayne Maschette.

**Treasurer.** Michael Kelzke.

**General Committee Members.**

Brian Lloyd and Jackie Tait.

A safe and "Happy New Year" to all, from the CRRA committee and members.

On the December 16, we celebrated Christmas with our "Carols at the Rotunda". We were blessed with a beautiful warm evening, and it was a lovely time coming together and sharing the joy and fellowship that the season brings. A huge vote of thanks to our treasurer Michael Keltzie, who put in many hours and lots of hard work on the musical component for the evening, a talented singer / musician in his own right.

Thanks also to all the members of the committee for their dedication and countless hours given freely to making all of our events so successful and enjoyable. Our first event for the new year is the "TWILIGHT CAR BOOT SALE" at HAROLD HUGHES RESERVE CORINELLA on WEDNESDAY 18th January 5pm to 8pm..... \$10 small \$15 large.....a great opportunity to re-home some of your surplus treasures.....or find a bargain to cherish, while munching on a "snag from the barbie"..... a good portion of the money raised by this event will be going to the Bass Valley Children's Centre, so please come along and support this very

worthy cause, phone 0456 777 707 to enquire or book a site.

**Australia Day, January 26** will see our Annual Bass Coast Shire Sponsored, "FAMILY FUN DAY" with FREE sausage sizzle, Jumping castle and other activities for the kids and lots of iconic "Aussie" music etc. it's a day to celebrate Australia and all things "Australian", we are a very lucky country in so many ways, and it is such a wonderful opportunity to acknowledge our uniqueness, sharing the day together is very definitely an Aussie tradition! B.Y. O. chairs, drinks, sunscreen, etc and be prepared to "have a great day" at the Rotunda on the Foreshore in Corinella from 10.30 am.

One year passes and another begins..... it's exciting.

In April, a very special one, the Luminous Streets project, part of the "Edge of Us" Regional Arts Victoria small Towns Transformation grant. Already, workshops have started at schools and various locations around the waterline towns and I would encourage you to get involved and have 'a go', that's the Aussie way, and it is a great way of connecting with others in the community and finding an outlet for a creative spirit that you possibly didn't even know you had. If you are creative, then it is a opportunity to try out a new "medium" working with recycled or renewable materials, and sharing your skills for all of us to enjoy and be inspired by when the Luminous Streets light up in April. What a fantastic and exciting way to begin a new year.

Our first meeting for the year will be on Friday the February 6 with a 7pm start for the meeting. We will be hosting a workshop from 4.30pm for the Luminous Streets project and free "hot roast pork sandwiches" will be on the menu from 6pm to help keep the tummy from rumbling!

All are welcome to come to the workshop, and /or meeting. We have some very exciting guest speakers planned for this year's meetings, and are very keen to see new faces come to the meetings and take an interest in the future of our wonderful, amazing "little piece of paradise".... Corinella.

We are actively seeking new members, but you are very welcome to attend the meetings whether you are a member or not..... the purpose of the CRRA is to encourage everyone to be involved in their local community, and community issues and events.

**Lyndell Parker. President.**



## Welcome to the first edition of The Waterline News for 2017.

We have included a some extra holiday reading features for your interest, with special thanks to Tony Hughes for his profile on Don and Irene Wheatley, from Grantville.

Interest continues to grow in our Arts, books and writing segment, where we had to hold over several submissions until next month.

The deadline for the next edition is February 1, with distribution scheduled for the third Thursday, February 17.

*Roger Clark, Editor.*

### Distribution Area:

We distribute 1500 copies each month through Tooradin, Koo Wee Rup, Lang Lang, Nyora, Loch, Kernot, Grantville, Corinella, Coronet Bay, Bass, San Remo, Newhaven, Cowes and French Island. We also send out almost 500 copies by email and all editions are available on our website:

[www.waterlinenews.com.au](http://www.waterlinenews.com.au)

**Disclaimer:** All views expressed in The Waterline News are those of the author of each article, not the publisher.

## INSIDE THIS MONTH

Section	Page	Section	Page
Advertisers index	34	Greg Hunt's news	30
Arts, Books & Writing	26-28	Health	12
Bass Coast Post in print	1-22	History	23
Community Notes, Directory, News, and Community Centre updates	3-10	Letters	29
Contact Details	3	Local Business News	13&17
Entertainment & Lifestyle	14-15	Markets, Op Shops and local Halls	7
Food	11	On the Road - Places to go - People	24
French Island News	18-20	Self Sufficiency	33
Gardening & Outdoors	32	Sports & Leisure	31
		Trivia, Philosophy & Quiz	16

### THE WATERLINE NEWS

Editor Roger Clark

PO Box 184 Grantville 3984

Phone 0410 952 932

Office Hours Mon- Fri 8.30am - 4.30pm

Email: [editor@waterlinenews.com.au](mailto:editor@waterlinenews.com.au)

Website: [www.waterlinenews.com.au](http://www.waterlinenews.com.au)

ABN 97 395 483 268



### ADVERTISING RATES

Small	6cm x 6cm	\$ 20.00
Small 1.5 (Bus Card)	6cm x 9cm	\$ 27.50
Double Small	6cm x 12cm	\$ 37.50
1/4 Page	9cm x 14cm	\$ 55.00
1/2 Page	18cm x 14cm	\$ 85.00
Full Page	18cm x 28cm	\$ 135.00

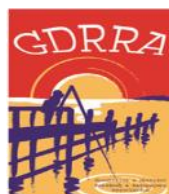
Colour ads + 100% - When available

Email: [editor@waterlinenews.com.au](mailto:editor@waterlinenews.com.au)

Advertising Deadline 1st each month



# Community Notes



## GRANTVILLE AND DISTRICT RATEPAYERS & RESIDENTS

### 2016 Committee

**President (acting)** Helen Zervopoulos  
**Vice President** Kat Cox  
**Secretary** Kathy Hopkins  
**Treasurer** Sylvia Harris  
**General Members** Chris Cox,  
**Membership Fees:** \$10 single - \$20 family  
**Kathy Hopkins, Secretary 0439 000 148**

No report this month



**President: Jean Coffey 0419 500 593**  
**Secretary: David Pearce 0401 514 339**  
 All Tenby Point residents are very welcome. Membership is just \$10 per household per year.  
**David Pearce**



**New Committee: Roger Hayhurst, Kathryn Cox, Eric Hornsby, Dr. David Bourne, Ian James, Barbara Coles, Dr. Eric (Tim) Ealey.**  
**Office bearers were due to be elected at a committee meeting this week, where Mick Dortmans from DELWP will outline plans to organise a community forum regarding foreshore erosion. Stay tuned for all the details**

**Contact: Kat Cox 0422 172 994**  
<http://www.gadfc.com.au/>

## PIONEER BAY PROGRESS ASSOCIATION

**Contact**  
**Zena Benbow**  
**pbpa@bigpond.com**

We've managed to scrape through for another year and get this free to attend Family Event organised once more. Remember it is a community fundraiser for the park- so please remember some cash for food and, after the success of last year, the silent auction!  
 Scat are back to entertain again and more surprises are in store.  
 Hope to see your smiling faces there!

**Zena Benbow**



## Coronet Bay Neighbourhood Watch.

**Contact: Ivan Bradshaw - 5678 0663 - 0414345754**  
 Chairperson. Dan Leskie.  
 Vice Chairperson Julie Cameron.  
 Secretary Pauline Hiscock.  
 Vice Secretary Ivan Bradshaw.  
 Social Media Manager Christine Slavin  
 Treasurer Joyce Cotter.  
 Vice Treasurer Tracey Farr.  
 Area Supervisor Levinus Van Der Nuet  
Fund Raising Bianca Peters.

We are now financially able to input into our/your community and are seeking suggestions as to where the community would like to see that money and future money spent, or goals we may be able to set for future purchases, please send any suggestions to us at:  
[coronetbaynhw@gmail.com](mailto:coronetbaynhw@gmail.com) or Pauline Hiscock 5 Bantering Bay Rd Coronet Bay Vic 3984.

Due to demand we are reordering uv pens in January that will be available for collection at our next meeting on 9/01 \$7 per pen, get in early to avoid disappointment.  
 Please contact Joyce Cotter for pen orders.

## South Coast Speakers Toastmasters

Meet on the 2nd and 4th  
 Wednesday from 7.30pm to 9.30pm  
 at the San Remo Hotel, 145 Marine Parade, San Remo.

If you would like to come to check it out,  
**call Brigitte 0421 812 691**  
**info@southcoastspeakers.org.au**



## CORONET BAY RATEPAYERS & RESIDENTS ASSOCIATION



### 2016 Committee:

**President** Kevin Brown  
**Secretary** Stephanie Hartridge  
**Treasurer** Mel Gration  
**General Committee Members**  
**To be confirmed.**

No Report this month



## A Leaf for the Memory Tree

Remembering our loved ones  
 When our loved ones, who we dearly miss, pass on, it is important to remember them in our own way.



Creating a leaf for the memory tree is a way to recognise and acknowledge those who have been a part of the Kooweerup Regional Health Service community and are no longer with us.

The Memory trees, decorated with metal leaves and engraved with personal messages, provide an honourable and lasting gift of remembrance.

The memory trees enable residents to participate in paying tribute to their friend. Staff, families and friends have the opportunity for remembrance and quiet reflection in lovely garden settings. There are 2 open dedications per year, and private visits can be arranged. Please call reception for dates and appointments.



## Kooweerup Regional Health Service

**235 Rossiter Road, Koo Wee Rup**  
**ph: 03 5997 9679**  
**email: gregorys@krhs.net.au**

# Community Notes



## BASS VALLEY FRIENDS OF THE R.S.L.

Are holding a Open Evening  
at the George Bass Hotel

On

TUESDAY 21ST MARCH 2017

7.00 PM

Guest Speaker is

MARK BAKER

( AUTHOR OF THE BOOK PHILLIP SCHULER )

If you wish to purchase dinner before the speaker  
please contact Daniel at the George Bass Hotel

On 56782206 to book.

## South Gippsland Arthritis Support Group



Coffee & Chat 1st Monday of Month  
6-8pm, Leongatha RSL &  
1st Tuesday of Month 2-4pm,  
Korumburra Indoor Recreation Centre  
Cost: Gold Coin Donation. For more  
information please contact:

Adam: 0408353785 phomdin2@bigpond.com

Marg: 0417 154 057

Diane: 5658 1443

## South Gippsland Mental Illness Carer's Group

If you would like to join the group or get  
more information:

Phone now -

Maggie 5658 1781

Rosemary 5662 4352

## Reiki Healing New to Corinella Christmas Special



**\$50 for 1 hour Reiki Healing  
Session with a Reiki Master**

**Benefits of Reiki:**

**Stress, Depression,  
Anxiety, Grief, weight loss, Illness recovery  
& many more.**

**Suitable for all ages. Evenings and  
weekends available.**

**Contact Kathryn to arrange a gift  
voucher or appointment**

**Phone: 0407 676 898**

**Website:**

**[www.reikieternalenergy.com.au](http://www.reikieternalenergy.com.au)**

**Email: [reikieternalenergy@gmail.com](mailto:reikieternalenergy@gmail.com)**



## South Gippsland Support After Suicide

### Have you been bereaved by suicide?

South Gippsland Support After Suicide is a new initiative  
offering peer support for those bereaved by suicide.

Our monthly support group meetings  
will be held on Thursday mornings at the  
Grantville Transaction Centre  
Corner Bass Highway and Pier Road, Grantville

Dates

18 August 15 September

20 October 17 November

15 December 19 January

from 10am-12pm

These meetings will be hosted by trained volunteers who have  
themselves been bereaved by the suicide of a loved one.

For further details or to RSVP

email [southgippslandsas@gmail.com](mailto:southgippslandsas@gmail.com) OR phone 03 9421 7640



**Support  
After Suicide**  
[www.supportaftersuicide.org.au](http://www.supportaftersuicide.org.au)



Supported by  
Bass Coast Shire

## ACCESS CONSCIOUSNESS BARS THERAPY

Did you know there are 32 points on your head  
representing different areas of your life that  
contain all the thoughts, ideas, beliefs emotions  
and considerations that you have ever stored?  
When these points are lightly touched, your  
brainwaves slow down, your head empties of  
thoughts, creating space in those areas and allows  
you to let go of all limitations and opens you to  
receiving.

**Great for Reducing Stress**

**Improved Sleep**

**Eliminates Mind Chatter**

**Feeling Stuck in Life**

**Greater Awareness**

**Less Reactive to Situations**

**Greater Happiness**

**Looking for some change in your life?**

**Is NOW the time to choose for you?**

**What are you waiting for?**

0417 594 997

[www.annmackenzie.accessconsciousness.com](http://www.annmackenzie.accessconsciousness.com)

## When was the last time you had a bra fitting?

Does your bra:

-leave red marks

-cause back pain or discomfort

-feel uncomfortable?

Book your free bra fitting appointment with an  
Intimo Bra Fit Specialist.

All fittings done in the privacy and comfort of  
your own home or elsewhere by arrangement.

Bra sizes: 8-24 A-G cup

Call Michele Fulwell on 0419 504 556

Independent Intimo Stylist



Bass Coast Health Supported Playgroup is held at the  
Grantville Hall, Thursdays from 10.00am – 12.00pm

during school terms. It includes the **smalltalk** program for parents,  
which provides parents with ideas on how to use everyday  
opportunities and activities to enhance their child's early literacy and  
learning at home.

**DO YOU HAVE CHILDREN  
UNDER 4 YEARS OF AGE?**



Come along and enjoy meeting other parents while you play with your child!  
Contact Janine on 0457 834 960

Special  
Offer....

## PRINTED A4 Flyers

Qty 500

Full Colour 1 side

170gsm stock

**= \$66** (incl. GST & delivery)

Call **0404 148 632**

to discuss any printing requirements  
you may have



Unit 10, 1488 Ferntree Gully Road, Knoxfield Vic 3180  
Tel: (03) 8740 3461 | Mob: 0404 148 632  
Email: [vered@minutemanpress.com](mailto:vered@minutemanpress.com)





Send us your Community Group  
Notices by 1st each month  
editor@waterlinenews.com.au

# Community Directory

**Artists' Society of Phillip Island**  
**56-58 Church Street Cowes**  
<http://aspi-inc.org.au/>

**Australian Red Cross**  
Woodleigh Vale Branch  
Members meet in each other's homes on  
2nd Thursday of Feb, Apr, Jun, Aug & Oct.  
Contact Sheila Campbell 5678 8210

**Bass Coast Community Baptist Church**  
Meets Sundays  
**OP SHOP** open Mon-Saturday  
Contact the Op Shop for details 5678 8625

**Bass Coast L2P Learner Driver Mentor Program** Wonthaggi - Corinella  
The Bass Coast L2P Program now has a car at Corinella & District Community Centre.  
For further information contact:  
Veronica Dowman 5672 3731 0467590679

**Bass Coast Strollers**  
Catering for all adults participating in walks around the Bass Coast region of Victoria.  
Contact Liz Hart 5678 0346  
Website: <http://basscoaststrollers.org/>

**Bass Friends of the RSL**  
Secretary Janet Welch 0411 446 129

**Bass Valley Landcare**  
**2-4 Bass School Rd, Bass 5678 2335**

**Bass Valley Lions Club Op Shop**  
Situated at the Grantville Garden Supplies  
Open Monday-Saturday 5678 8357

**Corinella & District Probus Club**  
1st Wednesday each month except January  
Bass Hotel 10am start, Morning tea supplied. Can purchase Lunch after meeting.  
Coral Smith 5678 0396

**Corinella Bowling Club Inc.**  
**Balcombe Street Corinella.**  
Patti Scammell 5678 0191

**Corinella & District Community Centre**  
**5678 0777 Mon - Fri 10am - 4pm**  
**Facebook @corinellacommunitycentre**  
[www.corinellacommunitycentre.org.au](http://www.corinellacommunitycentre.org.au)

**Corinella & District Men's Shed & Woodies Group** Corinella Road  
Visitors and new members welcome.  
Contact Secretary: Graeme 5678 0345

**Corinella Foreshore Committee**  
Contact Barbara Oates 0427 780 245

**Coronet Bay, Corinella & Surrounds Playgroup (0-4yrs)**  
Come and enjoy the fun at Coronet Bay Hall  
Mondays and Fridays 10am—12noon  
Monday Session - Free Play  
Friday Session - Free Play & Activities  
(Please bring \$2 per family and a piece of fruit. (\$5 Annual Membership per family), and ALL children are to be accompanied by their parent or carer.  
Contacts: Franciska 0400 465 377  
Ann 5678 0341

**Coronet Bay Adult Social Club**  
Tuesday 7-10pm Coronet Bay Hall  
Ann 5678 0341

**Country Women's Association of Vic inc. Bass Group.**  
Coronet Bay Margot 0409 559 047  
Cowes Lorraine 5952 2165  
Glen Alvie Libby 5678 3280  
Grantville Annie 5678 8037  
Lang Lang Aleeta 0419 525 609  
Loch Val 5659 4268  
Woodleigh Vale Carol 5678 8041

**Grantville & District Ambulance Auxiliary**  
Contact - Shelly 0417 593 497

**Grantville & District Business & Tourism Association**  
President Neroli Heffer 5678 8548

**Grantville & District Ratepayers & Residents Association**  
Secretary Kathleen Hopkins 5678 8327

**Grantville & District Foreshore Committee**  
Roger Hayhurst 0416 061 400

**Grantville Recreation Reserve Committee**  
Pat Van 5997 6221

**Grantville Tennis Club Inc.**  
Contact Pat Van 5997 6221

**Lang Lang Community Centre**  
Coordinators Marg and Michelle  
Phone 5997 5704  
Email: [llcc@langlang.net](mailto:llcc@langlang.net)

**Lang Lang Playgroup**  
(0-Preschool) Thursdays 9.30am  
Lang Lang Community Centre \$2 per child  
Contact Crystal 0473 077 125

**Phillip Island Community Art & Craft Gallery Inc.**  
Cowes Cultural Centre Thompson Ave  
Open every day 10am—4pm  
All Enquiries Call Aleta 0419 525 609

**Phillip Island Indoor Carpet Bowlers**  
Come and join the fun  
Friday 2 - 4.30pm, Saturday 1 - 4.30pm  
Phillip Island Celebration Centre 6 Lions Court, Cowes Contact Jack 0434 944 380

**Phillip Island & District Railway Modellers Inc.**  
The Phillip Island & District Railway Modellers Inc. meet every Sunday from 1.30pm to 5pm. At the Phillip Island Celebration Centre, 6 Lions Court Cowes.  
Contact Peter 5956 9513

**Phillip Island Patchworkers**  
Meet on a Monday night from 7.30 at the Newhaven Hall (except public holidays), the first Tuesday of the month at the Newhaven Information Centre meeting room at 10.30 and the last Tuesday of the month at the Cultural Centre in Cowes at 10.30. Cost to attend is \$2. To join the club is \$20 annually with a \$6 one off joining fee. For more information contact Debbie on 59521530 or at [phillipislandpatchworkers@gmail.com](mailto:phillipislandpatchworkers@gmail.com)

**Phillip Island Senior Citizens Club**  
Phone bookings 5952 6891  
Email [piscc123@gmail.com](mailto:piscc123@gmail.com)

**Phillip Island Squares**  
Square Dancing, Bass Valley Community Hall, Bass School Rd, Bass 7.30 - 10.00pm Thursday nights  
Contact: Carol 5952 5875

**Pioneer Bay Progress Association**  
Zena Benbow [pbpa@bigpond.com](mailto:pbpa@bigpond.com)

**Survivors of Suicide**  
Raising awareness to aid prevention  
Jillian Drew 0413 056 165

**St Pauls Anglican Church Bass**  
HC at 12.30pm every Sunday followed by a shared lunch  
Rev Greg Magee 5952 2608

**St Georges Anglican Church Corinella**  
1st Sunday each month 11.00am  
Other Sundays 9am  
Free Community Lunch Corinella  
Community Centre Second Friday  
Op Shop open Mon, Thur, Fri 10am - 2pm  
Saturday 9am- 12.30pm

**Tenby Point Residents Association**  
President Jean Coffey 0419 500 593  
Secretary David Pearce 0401 514 339

**The Probus Club of San Remo**  
Second Monday of the month (except January) 10am at the Newhaven Public Hall. Visitors Welcome.  
Enquiries: Neil Stewart 5956 6581

# Around the Markets & Op Shops

## U3A Bass Valley



### Courses offered:

Book Club, Bush Painting, Creative Writing, Gardening, Get Creative, Movies & Theatre Appreciation, Tai Chi for Arthritis and Welding.  
www.u3abassvalley.com

Heather White 5997 6323  
(PO Box 142 Grantville 3984)

### U3A TAI CHI

Why not give the U3A Tai Chi for Arthritis a try? Coronet Bay Hall 9.30am Tuesday  
Gentle exercise, good company and a cuppa.

Further information:

Laura 5678 0884  
Vicki 5678 8734



## MARKETS

### Every Sunday

#### Kongwak Market

10am - 3pm

Retro stalls, food, vegetables, coffee, curries  
30+ stalls

Enquiries: Jane 0408 619 182



### 1st Saturday

#### Archies Creek Indoor Market

Community Hall

Enquiries: info@archiescreek.com

### 2nd Saturday

#### Coal Creek Farmers' Market

Coal Creek Community Park 8am - 12.30pm

50+ stalls

coalcreekfm@hotmail.com

Contact for information 0459 629 000

### Cowes Island Craft Market

102 Thompson Avenue, 9am - 2pm

In the grounds of St Phillips Church  
60+ stalls Make, bake and grown goods and produce.

Contact for further details 0412 710 276

### 4th Saturday

#### Churchill Island Farmers' Market

40+ stalls. 8am - 1pm

peter@rfm.net.au

Further Information 0439 364 760

### Cowes Market on Chapel

Chapel Street. 8.30am - 2pm, 30+ stalls

Further information-contact 0428 603 043

### 1st Sunday

#### Jumbunna Bush Market

Jumbunna Hall

Further information, phone 5657 3253

### 2nd Sunday

#### Koowe Community Market

Cochrane Park, Rossiter Rd 8am - 1.30pm

Indoor/outdoor Phone 0418 289 847

Email: info@kooweemarket.com.au

### Rotary Club Market Wonthaggi

Apex Park 8am - 1pm, 50+ stalls

Walk to nearby Make it - Bake it Market

Contact: Neville Goodwin 5672 7245

Garry Sherrick 5672 5812

### Loch Lions Village Market

May - Sept Loch Public Hall

Oct - April Loch Railway Station Park

70 + stalls

Information from Noel Gregg 5627 5576

Market day phone 0418 500 520

### 3rd Sunday

#### Inverloch Farmers Market

The Glade, Esplanade, 8am - 1pm

50+ stalls

Information: peter@rfm.net.au

Phone 0439 364 760

### Tooradin Sunday Market

9am - 1pm

Stallholders wanted, \$20 includes 1 sausage & bread breakfast per stall.

All Market Enquiries: 0429 188 280

### 4th Sunday (Weather Permitting)

#### Grantville Variety Market

Grantville Recreation Reserve

Bass Highway, Ample parking.

Weather permitting, Except December which is the third Sunday.

8am-2pm 100+ stalls

BBQ & Sausage sizzle, Coffee Cart, indoor and outdoor, cake stalls plus plenty of home made goodies.

Contact for further details 5997 6221

### Last Sunday of each month

#### Inverloch Community Farmers' Market

The Glade, Esplanade, 50+ stalls

Fresh produce grown and made in Gippsland.

Email:

info@inverlochfarmersmarket.com.au

Phone 0417 370 488

### 2nd Friday and Saturday each month

#### San Remo Cuppa and Chat Market

St. Augustine's Church

Marine Parade San Remo

Hosts a Cuppa and Chat Market every month on a Friday and Saturday.

Friday 9am - 1pm

Saturday 9am - 12noon

10+ stalls

Bric a brac, cakes, & jams Friday, plus a sausage sizzle on Saturdays.

Further Information: 5678 5386

## OP SHOPS

### Bass

#### Bass Valley Community Group

#### Hadden House Op Shop

Next to Bass Hall, Bass School Road

Monday to Friday 9am - 3pm

Saturday 10am - 2pm

Phone Enquiries 5678 2277

### Corinella

#### St George's Anglican Church Op Shop

Smythe Street Corinella, next to Church

Monday, Wednesday, Thursday, Friday

10am - 2.00pm

Saturday 9.30am - 12.30pm

### Grantville

#### Bass Coast Community Baptist Church

#### Op Shop

Bass Highway, Grantville

Open Monday - Friday 10am - 3pm

Saturday 10am - 1.30pm

Phone 5678 8625

### Lang Lang

#### Lang Lang Community Op Shop

12 Westernport Road

Monday - Friday 10am - 3pm

Saturday 10am - 1pm

### Nyora

#### Nyora Op Shop at the Nyora Station

Open Monday - Saturday 9am - 1pm.

Enquiries to Sylvia, Phone 5659 0089

### San Remo

#### Bass Coast Community Health Op Shop

Back Beach Road.

Opening times and all enquiries to Bass

Coast Health on 5671 9200 or Email:

info@basscoasthealth.org.au

### Community Halls for

#### Hire

#### Archies Creek

Mez Oldham

0415 445 215

#### Bass Valley

5678 2277

Corinella Paula Clarke 0418 441 046

Coronet Bay Peter Thick 0429 851 004

Dalyston Dorothy Slade 5678 7334

Grantville Pat Van 5997 6221

Kernot Julie Johnston 5678 8555

Kongwak Betty Anderson 5657 4317

Loch Grieg Barry 0419 358 628

Kilcunda Marion 0404 135 434

Nyora Robyn 5659 0098

Newhaven Noel Street, 5956 6122

Rhyll Ring General Store, 5956 9205

Woodleigh Evan Jones 5657 7275





# More Community News



## Who are we?

Wonthaggi Neighbourhood Centre incorporating Mitchell House and the Harvest Centre is run by a community based Committee of Management. We aim to provide a positive, welcoming environment where you can meet new friends, learn or share skills, ideas and information. If you're interested in being more involved in your Neighbourhood Centre call in and have a chat to the Coordinator Jan Bourne.



Phone: 5672 3731

Email: mitchellhouse@desi.net.au

## LOCAL POLICE NETWORK



Bruce Kent | Station  
Commander, San Remo  
Police | Eastern Region Division 5 Victoria  
Police  
phone: 5678 5500 | fax: 5678 5766  
mobile: 0411 837 467

## Central Gippsland Police Investigation



Detectives from Central Gippsland Sexual Offences and Child Abuse

Investigation Team are appealing for information in relation to allegations of historical sexual assaults in the Grantville area in the 1980s and 90s.

It's believed the offences were committed against primary school aged children by an adult male.

Investigators are keen to speak to anyone who was a victim of a sexual assault in the Grantville area, particularly at the designated Grantville camp, around that time.

They are also keen to speak to anyone who has knowledge of any sexual assaults taking place.

Victoria Police encourages all victims of sexual assault and child abuse, and anyone who has knowledge of such a crime, to make a report.

Victoria Police is committed to investigating and bringing to justice those people who prey on children no matter how many years have passed.

Anyone who was a victim of sexual assault or has information relating to sexual assaults in the Grantville area can contact the Central Gippsland Sexual Offences and Child Abuse Investigation Team

5120 0351

**Information relating to any alleged sexual assaults can also be provided to Crime Stoppers on 1800 333 000 or submitted confidentially online at : [www.crimestoppersvic.com.au](http://www.crimestoppersvic.com.au)**

basscoast2pol@hotmail.com'."/&gt;

## Christmas Lunch a success



Despite the warm conditions on Christmas Day, 58 people came together to share a Christmas Community Lunch in Coronet Bay Hall. The day was also a celebration of the 10th Christmas Lunch which was initially commenced by Rona and Laurie Black. Rona and Laurie tirelessly presented the lunch for seven years and this year the decorations were in purple and silver, to honour their contribution to this very special lunch.

Thank you to those who attended and shared the Christmas cheer and the 'blending' of young and old on the day which was heart-warming to be part of.

Thank you also to those who handcrafted the decorations for the tables, the volunteers who baked Christmas puddings, Christmas cake, meringues and 'treats' to be taken home and enjoyed later on, and the workers who assisted with the preparation of the traditional Christmas Lunch.

Also thanks to the driver who collected and returned some of the guests to their homes. Thank you to the wonderful donors who helped provide such a spread on the day, Bass Coast Shire Council, Alex Scott Real Estate, Corinella Art Show Committee, Coronet Bay General Store, redwagon graphic design, Waterson Gas and two anonymous donors.

Joy Button

## STUDENT Choreography DANCE Challenge

You have an INVITATION to enter a unique dance presentation day on beautiful Phillip Island Saturday 28 January 2017 for ages 8-18



proudly supporting  
[beyondblue.org.au](http://beyondblue.org.au)



BEYONDDANCE  
create inspiration

Enter your own choreography "any style" solos, duo, trio, plus improvisation. Student teachers may represent their dance school in a small team entry. Feature categories for "Blue Challenge" Lyrical "Sing & Bling" Song & Dance "Minute to Win It" Jazz & Contemporary, Special Ability, VCE and Boys only.

[beyonddance.com.au](http://beyonddance.com.au) Tel 0432404408 [beyonddance@optusnet.com.au](mailto:beyonddance@optusnet.com.au)



# Community Centre News

## BASS VALLEY COMMUNITY GROUP Inc.

Bass School Road, Bass  
Centre Manager:  
Roderick McIvor  
Phone 5678 2277



Well... And so finally the year came to an end. At the Bass Valley Community Centre we had our final Christmas Party to thank the volunteers who had worked so valiantly through the year to support us. And the clients we support were also in attendance. It was a good way to end the year.

It was a year that seemed to slip away from us very fast, with a new month gone every time we looked up. Until right at the end, when it began to look like Christmas would never arrive.

We also had a very successful Christmas raffle. The prize was a wonderful collection of items donated by very generous supporters from the Waterline area and beyond to Wonthaggi and as far as Korumburra. A number of people put a lot of effort into selling the raffle tickets and we amassed nearly \$1500, a great outcome which will be very much needed as we move into the second half of the financial year. The winner of the raffle was Annette, one of the volunteers at the Hadden House Opportunity Shop.



**Annette with her prize, which included a wheelbarrow.**

It is always a bit special when the winning ticket is drawn and it comes out with the name of a hardworking volunteer, as the tickets are sold far and wide and the winner isn't always a local.

I mentioned before that we will be very thankful to get the revenue from the raffle. This year we have not been able to open the op shop on Saturdays due to a lack of volunteers on that day. It is a very big ask to expect someone to give up their Saturday morning (9:00 to 1:00) to service the op shop. As a consequence, our op shop revenue is down. So if there is anyone out there who could see their way to helping out on Saturdays, we would love to hear from them.

**Give us a call on 5678 2277.**

And speaking of giving a call, we now have a new telephone system that lets us ring from anywhere on the site, including the op shop. We were lucky enough earlier in the year to get a grant from the Commonwealth Government to support our volunteers. As well as the new and improved phone system we also now have a new split system air conditioner in the op shop. This replaces an antiquated air conditioner that provided no heating at all.

Back at work in January, our sights are set on our BIG annual fundraiser, the Bass Valley Autumn Festival. We've already been putting significant effort into it and are hoping that everyone puts Saturday 4th March into their diaries. There will be a number of surprises at this year's Festival that we hope make it an even bigger success than last year's.

**Roderick McIvor**

## Corinella and District Community Centre



### Spread your wings and fly with us

#### Neighbourhood House activities

- Strength training & Yoga
- Art classes & Exhibitions
- Craftie's Group
- Computer Classes
- Book Club
- Youth Drop-in Centre
- Internet Café (free for members)
- Art Gallery on the West Wall
- Community Lunch & Movie
- Food Bank for those in need
- CDCC Bus Trips max 8 people
- Historic Cemetery Walks
- Foodies Markets
- Meeting rooms for hire
- Photocopy, scan and fax services

**Call in for further info or Like us on Facebook**

**@corinellacommunitycentre**

**See you soon,  
Iain Ritchie (Manager)**

## LANG LANG COMMUNITY CENTRE



- Public Internet Access to All members.
- iPad Tuition.
- Lifestyle classes including: Yoga, Pilates, Cardio, Walking group and Line Dancing, Tai Chi.
- Playgroup and Hey Dee Ho for the littlies.
- A variety of Patchwork groups.
- Men's Shed Group.
- Secretarial Support Services including: Photocopying, typing and scanning.
- Book Exchange
- Small offices for hire
- Centrelink Agent with dedicated computer.
- Medicare Claim Service

#### Forthcoming events:

**Jan 26 - Australia Day and Citizenship Awards**

**Feb 28 - Pancake Day**

**Mar 1/8/15 - First Aid Cert II & CPR**

For further details on all events  
Please call us, we open @ 9.30am five days a week.

**7 Westernport Rd, Lang Lang 3984**

#### Contact Coordinators

**Michelle or Marg  
(03) 5997 5704  
llcc@langlang.net**

**Centre re-opens Thursday January 19.**



**0473 077 125**



# Community



**CFA NEWS  
With  
Michele  
Fulwell**

**Happy New Year to all! Hopefully you all had a safe and happy Christmas and New Year.**

Kernot-Grantville saw the Christmas season start with our annual dinner and awards night. Captain Andrew Blackney was awarded a 30 years of service to CFA medal with other recipients receiving 15, 10 and 5 year awards. Other awards on the evening went to Joan Kerr for Firefighter of the Year for commitment to CFA and brigade ideals and Jan Pettenuzzo, Allan Kerr and Joan Kerr were all awarded the brigades Heart of Gold Award for commitment to member welfare.

New Year's Eve saw a huge turnout at the Coronet Bay Fireworks. Young and old delighted in touring both the Corinella Tanker and Kernot-Grantville Tanker 2 with children needing to know the emergency 000 number to earn a tour. Barrie Stewart, Community Safety Coordinator for Kernot-Grantville Brigade, was on duty to make sure the kids got the answer right and answer any questions.

Despite the recent rain CFA is warning of a higher than average risk of grass fire this season. Hopefully most of you attended the Community Meeting held in Grantville earlier this month but if you didn't head to the CFA website and check out the plan and prepare section. Remember, if you are confronted by a grass fire in a built up area, you need to make your way at least two streets away, and wait until it is safe to return home. It may be very smoky, so if you are an asthmatic make sure you take your medication with you as well as some drinking water. Don't forget your pets, on hot days make sure that they have plenty of water and some shade. If it gets very hot a bit of ice in their water bowl will be a great treat for them.

Stay in touch with events by listening to our local emergency broadcaster - ABC Melbourne 774 AM, downloading the VicEmergency App, bookmarking [emergency.vic.gov.au](http://emergency.vic.gov.au), following CFA and Emergency Vic on facebook or calling the VicEmergency Hotline on 1800 226 226. For further information [www.cfa.vic.gov.au](http://www.cfa.vic.gov.au)



## Have Your Say about mangroves at Grantville



### Your input is welcomed on the proposed plan to protect the Grantville foreshore on the Western Port coastline.

Department of Environment, Land, Water and Planning (DELWP) Manager Environmental Planning for West Gippsland, Mick Dortmans said: "The Grantville coastline is exposed to ongoing erosion that continues to affect the foreshore, native vegetation, public access and the amenity of the area."

"We are seeking broad community feedback on a Draft Mangrove Re-establishment Plan which has been developed to guide the revegetation of the inter-tidal zone at Grantville."

"Mangroves have been demonstrated to provide effective protection in many coastal environments around the world and trials are continuing, to establish mangrove seedlings in Western Port. It is intended that the planting design will allow continued access to the waters of Western Port."

"Mangroves provide many benefits in the Western Port environment. They are a sustainable, cost-effective solution to provide coastal stabilisation and deliver other ecological benefits to the marine ecosystem."

"Mangroves were previously present in the Grantville area but were over harvested until the 1960s."

"A program of block planting with gaps is being planned, to improve the protection of the coastline while still allowing ongoing access to the waters of Western Port from the foreshore. The planting program is planned to occur over the next three-to-four years."

In the past, mangrove forests were extensive along the Western Port foreshores, including at Grantville, and provided a natural defense against erosion of the coastline. It is anticipated that the mangroves will provide a long term sustainable solution to coastal erosion in the Grantville area.

The draft plan has been developed following consultation with representatives from the Grantville Foreshore Committee of Management, Parks Victoria, Bass Coast Shire Council, the Western Port Seagrass Partnership and DELWP is seeking

community input for the completion of this plan. To view the plan and complete a community input form, go to [www.haveyoursay.delwp.vic.gov.au](http://www.haveyoursay.delwp.vic.gov.au). We will also have a table set up at the Grantville Market on the 22nd of January where you can view the plan and provide feedback.

Community feedback will be open until Tuesday 31, January 2017.

For more information please contact:

**Mick Dortmans  
(03) 5662 9914.**

The Western Port Seagrass Partnership will again be conducting some on-site mangrove revegetation works at both Lang Lang and Grantville, on January 17 and 18..

<http://www.seagrass.com.au>



## Western Port Biosphere seeks water stewards!

Water is a vital part of life, but while most of us take it for granted it's an increasingly scarce resource.

That's where water stewardship comes in. Water stewardship is a form of water management that aims to achieve good water quality, sustainable water balance, healthy ecology and water security. It's a great opportunity to focus on the responsible use and management of water. The Western Port Biosphere's water stewardship project helps landholders, businesses and organisations to improve water management on their properties which in turn has a positive influence on local waterways.

There are many benefits to being a water steward, including cost savings through more efficient water and fertiliser management, more sustainable water use through development of a water stewardship plan to identify and address site issues, external accreditation and potential funding for on-site works. The Biosphere provides training and assistance to help water stewards get up and running. Water stewardship is good for business, good for the community and good for the environment!

However, you don't have to become a water steward to get involved. There are lots of things you can do to be water smart:

[www.biosphere.org.au/be-water-smart](http://www.biosphere.org.au/be-water-smart).

For more information on water stewardship visit the Western Port Biosphere website:

<http://www.biosphere.org.au/our-biosphere>

**Contact Biosphere on (03) 5979 2167.**



# Food

## RECIPES

### Spicy sesame chicken salad



During the warmer months, often what we're looking for in a dinner is something a little bit lighter. This spicy sesame chicken salad fits the bill. It's packed with flavour and will fill you up, but it won't sit heavy on your stomach, making it the perfect summer salad.

**Serves: 4**

#### Ingredients:

##### Spicy chicken

800g chicken breast, thinly sliced  
1 tablespoon black sesame seeds  
1 tablespoon white sesame seeds  
1 tablespoon sesame oil  
75g red curry paste

##### Toasted nut slaw

15g pumpkin seeds  
15g sunflower seeds  
15g chopped nuts  
15ml soy sauce  
10g white sesame seeds  
5ml sesame oil  
5g coconut sugar  
2 cups shredded cabbage  
Vinaigrette to taste

##### Baked kumara

1 kumara  
1 tablespoon olive oil  
Salt and pepper

#### Method:

To begin mix curry paste with sesame oil and sesame seeds.

Mix in sliced chicken and evenly spread paste over all slices.

Leave to marinate for 30 minutes. Heat a pan with a drizzle of olive oil on medium heat.

Carefully place chicken slices in pan and sear on each side for three minutes.

Place on a tray into preheated oven 180c for 15 minutes.

Combine all toasted nut slaw ingredients, except the cabbage and vinaigrette, in a bowl.

Spread on a baking tray and toast in a preheated oven at 180c for 10 minutes.

Stir and toast a further five minutes. Stir vinaigrette through cabbage and add toasted nuts.

Peel kumara and cut into 1cm rounds, you'll need eight pieces.

Place in a bowl and drizzle over olive oil and season.

Lay flat on a baking tray and bake in a preheated oven at 180°C for 15 to 20 minutes.

In the same pan as the chicken place kumara rounds and brown on each side till golden, move these to a baking tray and finish in preheated oven 180°C for six minutes. Distribute toasted nut slaw between four plates.

Place two baked kumara per plate, off to side of slaw. Top with chicken strips.

**First appeared on Stuff.co.nz. Image credit: Stuff.co.nz / Ironie Café and Bar**

### Healthy Christmas or Everyday Fruit Cake



#### Ingredients

600g mixed dried fruit (raisins, apricots, sultanas)  
1 tsp ground cinnamon  
1/4 tsp nutmeg  
1 tsp vanilla bean extract  
1 orange (juice and zest)  
3 tbs extra-virgin olive oil  
3 organic eggs  
2 cups ground almonds  
50g walnuts

#### Method

Preheat the oven to 160dg Celcius

Prepare a 20cm-round cake tin with baking paper lining the sides and the base.

Combine the dried fruit, cinnamon, nutmeg,

Vanilla, orange zest and juice, olive oil and eggs in a large bowl.

Add the almonds and walnuts and mix through.

Spoon the batter into the baking tin.

Bake for 1 1/2 hours.

Insert a skewer - if it does not come out clean, bake for another 30 minutes.

Cover the top if necessary to prevent over-browning.

Cool before removing from tin and store in an airtight container in the fridge for up to a month.

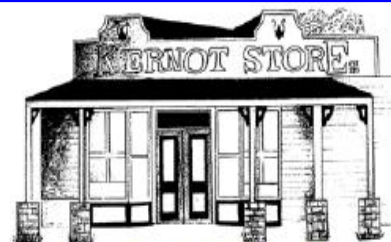
The Waterline News kitchen tried this over the Christmas break and it was a great success, very popular, so much so we had to make two.

**This is an edited extract from:**

**The Healthy Chef: Purely Delicious,**

**By Teresa Cutter.**

<https://www.thehealthychef.com/>



**Kernot Food & Wine Store**  
Paul and Julie Johnston

#### Open

Thursday & Sunday 9.30am - 8.00pm

Friday-Saturday 9.00am - 10.00pm

Breakfast & Lunch Thursday to Sunday

**Wood Fired Pizza Thursday to Sunday**

Dinner Menu Friday & Saturday

[ Winter opening times may differ ]

**Live Music Friday Night & Sunday Lunch**



1075 Kernot-Loch Road  
Kernot, Victoria 3979  
03 56 788 555

[kernotfoodandwinestore@gmail.com](mailto:kernotfoodandwinestore@gmail.com)  
facebook: Kernot Food and Wine Store

### BASSINE SPECIALTY CHEESES

Bass River Dairies Whole Milk. 1 & 2lt.  
Plus an exciting range of gourmet  
cheeses, made on the premises. Café,  
Lunches, and yummy Ice Cream.

**Now Open 7 days a week**

**Mon-Thur 10-4, Sat-Sun 10-6**

**Phone 0466 183 513**



\*\*Terms & Conditions apply.

Cover tailored specifically for over-60s.  
The best holidays come from peace of mind.  
For more information call 1800 622 966



## DEMENTIA

With Dr Rachael Wonderlin

We have to leave right now -

“Let’s go,” she said. “We have to find out where my husband is. We have to go home now.”

Urging her to “please wait” was not working very well. Amelia was intent on going—and she was starting to get agitated. It didn’t help, of course, that she had a UTI (urinary tract infection). I could not get this 99-year-old woman to sit down. (And, of course, it didn’t help that she had trouble walking by herself.) We worked on activities, we tried watching TV, we tried exercising. Nothing was getting Amelia to calm down.

“He’s coming to pick me up, and then we have to go get in the car and go home,”

she pleaded with me.

Suddenly, I had an idea.

I grabbed Amelia’s winter coat, hat, and shoes that were hung up in the other corner of the room.

“Amelia, let’s get ready to go,” I suggested, offering her the winter coat.

I put the winter cap on her head and put her winter boots on.

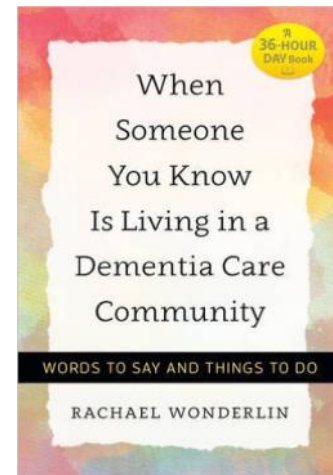
“I want to make sure that we’re ready to go when your husband gets up here,” I smiled.

“Oh, thank you. Good idea,” she nodded, adjusting the cap on her head.

“Feeling ready” solved the problem almost immediately. She still talked about going home, but it was fewer and farther between requests.

Amelia knew that I was listening to her concerns, and that I was addressing

them properly—even if we weren’t leaving the house that day, or any day after that.



[www.dementia-by-day.com/](http://www.dementia-by-day.com/)



**Grantville Medical Centre**  
2/1524 Bass Highway,  
Grantville

**For Appointments Call**  
(03) 5678 8029

### Hours

Mon - Fri 9.00am - 4.30pm  
(Wed closes at 1.00pm)  
Closed over lunch period

### Bulk Billing

All Pensioners, Health Care Card  
Holders and children under 16 are  
Bulk Billed.

[www.wonthaggimedical.com.au](http://www.wonthaggimedical.com.au)



## LANG LANG COMMUNITY FAMILY MEDICINE

**BULK BILLING**  
(TO ALL ELIGIBLE MEDICARE CARD  
HOLDERS)

**SAME DAY APPOINTMENTS AVAILABLE**

Services include:

General Medical Care, Minor surgical  
procedures, Immunisations, Skin Cancer  
Screening, Travel Medicine, Men’s Health,  
Women’s Health, Weight Management  
Preventative Medicine, Chronic Disease  
Medicine, Aged Care, Obstetrics, Mental  
Health, Physiotherapy, and  
On - Site Pathology .

Dr Andrey Butrev MBBS FRACGP  
Dr Win Naing MBBS FRACGP  
Dr Myat Pwint Thu Ang MBBS FRACGP

5 Whitstable St, Lang Lang

**Phone: 5997 5799**

“Caring Family Medicine”



**DG Nurse Practitioner**  
Grantville Transaction Centre  
Cnr Bass Hwy & Pier Rd  
Grantville, 3984

**Hours**

Mon, Tues, Thur, Fri 8:30 am - close

**Bulk Billing**

All consultations bulk billed  
May have fees for some procedures\*

**For appointments phone**  
5616 2222

or

0467 841 782

**Same day appointments available**

**Some of the services available**

Fluvax  
Men’s Health  
Referrals  
Wound Care  
Dressings\*  
Lesion removal\*  
Treatment minor illnesses / infections

Immunisations  
Prescriptions  
Skin Checks  
Women’s health  
Ear syringing\*  
Suturing\*



**FOCUS**  
on Lifestyle

**Fred Lodge**

Factory 3, 17-19 The Concourse, Cowes, Vic, 3922

Ph: (03) 5952 3352 Fax: (03) 5952 3342

Mob: 0437 243 448

E-mail: [focus@waterfront.net.au](mailto:focus@waterfront.net.au)

**Mobility Aids & Lifestyle Products**



**Nici Marshall**  
MASSAGE THERAPIST

\*Relaxation \*Therapeutic \*Deep Soft Tissue  
\*Myofascial Release \*Sports Massage \*Myofascial Cupping  
\*Pregnancy Massage \*Manual Lymphatic Drainage

[facebook.com/nicimarshall](https://facebook.com/nicimarshall)  
0488 665 051  
5/39-41 Panorama Drive  
San Remo 3925  
[nicit1968@hotmail.com](mailto:nicit1968@hotmail.com)  
Member of AAMT





## Feeling like an underdog in the jungle that is business today?

Sensing the need to adjust your business model? Not sure how to go about it?

### Launch of Your Business Success Group Coaching Program

We are announcing the Melbourne South East and Westernport chapter of the World Wide Launch of an exciting 12 month Group Coaching program. If you are planning on an expansion, want to tap into new markets or just grow your business and be more profitable in new and exciting ways then you should join this innovative program.

### A Program to give you Hundreds of Ideas

.... and a simple structure to implement your ideas and strategies. The program has all of the high quality content, interactive sessions and material that you could ever want. You will benefit significantly from being able to access the latest tools and techniques.

### What the Research Shows

A 25% increase in revenue and double profits by embracing cloud software (Source: *Exact and PB7 Research*)



Take your business to the next level, register by 31 January and receive a 40% discount.

### The Power of Networking

Businesses will not only learn from highly qualified and skilled consultants facilitating this program, they'll also learn from other business owners who have real world experiences and knowledge to share!! *We become a team . . . . the power of networking.*

### What to Expect from Your Investment

The YBS Group Coaching Program should be viewed as an investment you need a return on, not a cost. When fully implemented the program benefits will easily see a minimum of a 2X return on your investment.

### Money Back Guarantee

The program comes with a 60 Day Money back guarantee. If you don't feel that the program is helping you, we will step in to provide guidance at our cost. In the unlikely event that there are still no solutions to your issues, we will give you your money back.

To Get Your YBS Group Coaching Information Kit

Phone: 0427 841 096

Or Visit Us Online At

[www.neweramangement.com.au](http://www.neweramangement.com.au)

freedom  
organics



San Remo

127 Marine Parade  
San Remo 3925

Michelle Gibson  
0412 299 796

[freedomorganicssanremo@gmail.com](mailto:freedomorganicssanremo@gmail.com)  
[facebook.com/freedomorganicssanremo](https://facebook.com/freedomorganicssanremo)

**"Success is not final; failure is not fatal: It is the courage to continue that counts."**

**-- Winston S. Churchill**



Luggie Foldable Scooter. 3 different models available. From \$3990  
Monarch pull apart/portable electric wheelchair. From \$2850  
10% discount with this advert in JAN/FEB  
Other models also available. 0400 565 062



**ScooterinAbout, Drouin. Gippsland's Premium Luggie Dealer**



Happenin Hair and  
Beauty

3/1509 Bass Highway  
Grantville, Vic, 3984

03) 5678 8847

Unique. The way travel should be



Travel  
Managers  
As individual  
as you are

Kirra Moon-Curry  
Personal Travel Manager

M: 0403 190 234

E: [kirra.moon-curry@travelmanagers.com.au](mailto:kirra.moon-curry@travelmanagers.com.au)  
[travelmanagers.com.au/KirraMoon-Curry](http://travelmanagers.com.au/KirraMoon-Curry)





**Moe-Latrobe  
Jazz Club**



**Enquiries: Bruce Lawn 5174 3516**

**South Gippsland Jazz  
Soc.**



**Inverloch Jazz Club**

**Enquiries: Neville Drummond 5674 2166**

**Phillip Island Jazz Club**

**Sunday February 19**

**Bass Room, Ramada Resort 2-5pm**

**The Jackson Four - Australia's Blues,  
Groove & Jazz Hammond B3 Quartet**



The Jackson Four have now been impressing audiences across Australia since 2013. And, more recently their growing following in the U.K., U.S. and Europe. Locally, they've appeared at festivals including the Wangaratta International Jazz, Bendigo Blues and Roots, By the Bay – Wine and Blues (Kingston), Eltham Jazz and Blues, Stonnington Jazz, Castlemaine Jazz, Mornington Winter Jazz and Frankston Waterfront to name just a few. And, as part of their recent promotional tour of the U.K. in July 2016, following up on their surprise 2015 U.K. Blues radio chart success. They've released 'Live at the Western Port Festival'. A promo EP for U.K. Blues and Jazz radio. Supporting the release, appearances at renowned Blues and Jazz clubs followed. Including, 'Ain't Nothin but the Blues Bar', Soho, 'The Alley Cat Club', Covent Garden and East End Jazz Club, 'The Royal Inn on the Park'. Receiving an enthusiastic welcome and positive comments from London audiences and venue managers alike.

The band's distinctive style and sound is centred around the classic Hammond B3 organ. With interplay from soulful and Bluesy sax and vocals. All driven by a strong Swing, jazz, Latin rhythm and percussion section. Their music is a journey into the crossroads where Blues and Jazz intersect. With a repertoire mixing the sounds of New Orleans, Chicago and Memphis into their own interpretations of renowned favourites and hidden unknown gems that the band searches out.

**Visit The Jackson Four**

**Web: [jacksonfour.com.au](http://jacksonfour.com.au) - Facebook:**

**[facebook.com/jacksonfourquartet](https://facebook.com/jacksonfourquartet)**

**For more information please ring Robin Blackman on 0432 814 407.**

## 2017 Inverloch Jazz Festival



**The 24th Inverloch Jazz Festival.  
Inverloch becomes alive as Jazz kicks  
off with 40 outstanding bands and  
musicians.**

**Held over the Labour Day weekend  
March 10-13 2017. 40 Bands**

**It's an outstanding festival full of great  
Jazz for a great cause in a great place.**

**Saturday**

The Grand parade. 10am includes The Wonthaggi Citizens Band followed by local community groups all dressed up and displaying their interest in many ways. Cars, floats, and banners. Last year's colours were black and white with the theme "Birds of a feather". All entrants in the Rotary Street Parade gather early Saturday morning at The Glade / Esplanade in time for the judges to decide the year's best entries before the parade begins at 10am. It is the Rotary Club of Inverloch who organises the parade, provides marshals, and donates the monetary prizes awarded to the winner in each category. At the end of the Parade a Pied Piper will lead budding musicians into the stadium to learn about the instruments

Are you having difficulty tuning in to 103.1 3BBR-FM?  
You can now hear your favourite programs through our streaming service.  
Find the link at: [www.3bbrfm.org.au](http://www.3bbrfm.org.au)



played at the festival.

**Saturday Jazz**

11am until 11pm at 3 indoor venues.

Enjoy lunch or dinner at The RACV accompanied by Jazz.

Reservations 5674 0000

**Sunday**

The Sunday Morning Jazz church service at 9.30am - 10.30am is run by the Wonthaggi and Inverloch Inter-Church Council

**Sunday Jazz** 11am until 11pm at 4 indoor venues.

Enjoy lunch or dinner at The RACV accompanied by Jazz.

Reservations 5674 0000

**Monday**

A Free Picnic in the Park - Bring your picnic gear and relax with plenty of food and drink stalls for refreshments as you listen to The Big Band Jamboree to complete the festival. 11am to 4pm

**Ticketing is pain free through Ticketebo.**

What's more, you can buy 4 weekend tickets in one order and receive a free bottle of wine. Why not get a group of friends together. We will see a great turnout of jazz fans so get booked early. The website has a new look. It is easier to read, navigate, and print off forms.

**BOOK NOW**

<http://www.ticketebo.com.au/inverloch-jazz-festival/the-24th-inverloch-jazz-festival.html>

**Contact Information**

**Information regarding the 2017 Jazz Festival can be had by emailing:**

**[info@inverlochjazzfestival.com](mailto:info@inverlochjazzfestival.com)**

**Phone Enquiries**

**Clive - Mob. 0434 574516**



**The Jazz Club - 12-2pm Saturdays.**



**~ BANJO'S ON ALBERT ~**

Don't forget to book in for a delightful meal at Banjo's on Albert Street before taking your seat for an evening of top jazz entertainment. Meals, service and ambience is all first class - make a booking by telephoning 5127 1007

**GIGS RUNNING FRIDAY NIGHTS DURING SUMMER PERIOD**





# & Lifestyle

**Saturday February 4**  
Coronet Bay Hall  
7 - 11pm



Coronet Bay UNPLUGGED continues to attract good audiences every 1st. Saturday of the month at 7pm. at the Coronet Bay Hall, Gellibrand street. No matter what style of music you like there will be something to your taste. You can bounce along to rock or shed a tear with heart rending folk, or just have the troubles of the day flow away with beautiful classical music and poetry. Truly the best value entertainment around, it's just a gold coin to enter and supper is provided.

## KERNOT FOOD & WINESTORE



**Friday & Saturday nights,  
Sunday afternoons .  
Live music at The Kernot  
Store.**

**For details on who is  
performing and to book a  
table:  
Call Julie on 5678 8555**

## WIN A CD

For your chance to win a fabulous Australian Jazz CD simply send your name and address on the back of an envelope to:



PO Box 184 Grantville, 3984,  
or you can Email: Win A CD to  
**editor@waterlinenews.com.au**  
But, don't forget to include your name  
and address if you are emailing.  
Congratulations to our December winner  
Elizabeth Sinnott, from Grantville,  
your CD is in the mail.  
**Why not try your luck this month?**

## NOW ON SALE



**Andrew Nolte's new CD,**  
"The New Wireless" 10 tracks  
Is now available from The Waterline News.  
\$12.00 plus \$2 p.p  
Order now.

**Email: editor@waterlinenews.com.au**  
Reminiscent on the world famous Paul  
Whiteman Orchestra, this is one of the  
finest Jazz Orchestra CD's I have ever  
heard.

Editor

## The New Nite Owls

We also have copies of  
The New Nite Owls  
CD, We'll Meet Again  
featuring the great  
musical talents of Patrick  
Miller, (Tenor, Soprano  
saxophone & vocals), Rob Moffatt,  
(Trombone), John Morrison, (Piano), Isaac  
Barter, (Bass) and Richard Opat. (Drums  
and Washboard.  
\$10.00 plus \$2 p.p.

**Email: editor@waterlinenews.com.au**

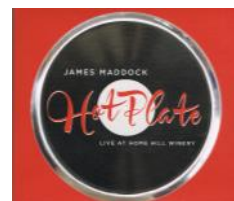


**Registration, Ticketing & Program  
Coordinator – Denis 041 950 4028  
Email: westvicjazz@gmail.com**

**Secretary: John 042 032 7851  
General Email:-  
portfairyjazz@gmail.com  
Festival Website  
www.portfairyjazz.com.au**

## CD REVIEW

If you saw James  
Maddock at the  
recent Phillip Island  
Jazz Festival and  
missed out on getting  
a copy of his  
outstanding CD  
"Hotplate" then make



**sure you get hold of a copy now.**  
Copies can be purchased on iTunes or by  
contacting Melanie Maddock via email.  
**mMaddock@redcrossblood.org.au**  
She is happy to arrange postage within  
Australia and generally receive payment by  
direct deposit.  
She can also provide the banking details on  
request. The CDs are \$25 each. Happy to  
include postage within Australia in that  
price if you mention where they saw them.  
This CD showcases James' versatility as a  
performer, which made him such a hit at the  
Phillip Island Jazz Festival.  
There are 12 tracks, You Don't Know Me,  
Fly Me to the Moon, Gee Baby, Ain't I  
Good to You, Just Squeeze Me, Aint That a  
Kick in the Head, Boogie Woogie, I Might  
Meet You at a Café in Paris, An Evening in  
Roma, All Night Long, Hot Plate Shuffle,  
Just a Gigolo/Ain't Got Nobody and Ev'ry  
Day I Have the Blues. Great value CD.

**Looking to buy or sell?**

**'When Quality Counts'**

**Contact the the Phillip Island Specialists**



**PETER BUITENHUIS**  
Chief Executive Officer  
0407 045 525



**MIKE FOENANDER**  
Executive Residential &  
Commercial Sales Manager  
0408 547 677



**JENNI KENT**  
Sales Property Consultant  
0428 566 643



**MARC COULTER**  
Sales Property Consultant  
0477 045 744



**BETH LYNCH**  
Sales Property Consultant  
0402 518 313



**JOSH DUNSTAN**  
Sales Property Consultant  
0407 558 933



**GREG DAVIS**  
Sales Property Consultant  
0488 279 740



**SARAH FOSTER**  
Sales Support  
5952 5100



**RACHAEL MILLAR**  
Sales Support/Personal  
Assistant  
5952 5100



**CAMILLE MORRIS**  
Marketing & Business  
Development Manager  
0417 181 961

Sales  
**59525100**

54 Thompson Avenue, Cowes Vic 3922

**Judith Wright**  
**Stockdale & Leggo**

real  
estate

[www.phillipisland.com.au](http://www.phillipisland.com.au)

**Welcome®**



# Trivia and Philosophy

## QUIZ?

1. Into which sea does the Nile flow?
2. Three continents lie on the Tropic of Capricorn, South America is one, name any of the other two?
3. In American currency 10 cents make a what?
4. Afrikaans was developed from which European language?
5. An Ortanique is a cross between a tangerine and what other fruit?
6. What Italian word for 'Scratched Drawing' can be found on walls all over the world?
7. What musical features 'Some Enchanted Evening' and 'There Is Nothing Like A Dame'?
8. What was the name of the first manned lunar landing mission in 1969?
9. Which boxer was nicknamed 'The Dark Destroyer'?
10. What was the name of Ritchie Valens' girlfriend?
11. What is the procedure called where an anaesthetic is injected close to the spinal cord?
12. What poisonous oily liquid occurs naturally in tobacco leaves?
13. Who had his first UK top 10 hit with

'Wichita Lineman'?

14. Which sign of the Zodiac is represented by the Scales?
15. In which country was Rudyard Kipling born?
16. What is the gemstone for September?
17. What instrument has been nicknamed the 'Mississippi Saxophone'?
18. One and a half litres of champagne is known as a what?
19. In alphabetical order name the three particles that make up an atom?
20. What is the common name of the 'Auora Borealis'?

## ANSWERS

1. Mediterranean
2. Australia, Africa, Dime
3. Quat
4. Dutch
5. Orange
6. Graffiti
7. South Pacific
8. Apollo XI
9. Nigel Benn
10. Donna
11. Epidural
12. Nicotine
13. Glen Campbell
14. Libra
15. India
16. Sapphire
17. Harmonica
18. Magnum
19. Electron, Neutron, Proton
20. Northern Lights

**New Computer Classes Enrol Now**

Commencing August 5th

Classes are held in the Koo Wee Rup Men's Shed, 215 Rossiter Road, Koo Wee Rup. Friday mornings suit absolute beginners at 9.00am and the more advanced at 10.00am. Bookings essential as places are limited to 5 per group. Please phone Geoff 5997 1974, or Brian 5997 9687



ThePhilosopher'sZone

*"Out of suffering HAVE EMERGED the strongest souls; the most massive CHARACTERS are reared with scars."*

-Kahlil Gibran

Destiny & Rescue

**Chase Computers**

**2015** Bass Coast People's Choice Award Winner

Trades and Services

**\*\* WE COME TO YOU \*\***  
**NO FIX - NO FEE\***  
\*conditions apply

**Gordon Chase**  
**Chase Computers**  
Specialising in individual needs, clubs and businesses  
and offering local, friendly advice.

**(03)56787097 or 0430168345**  
**www.esahc.com gordon@esahc.com**

your PC and laptop woes - sorted  
your email and internet - fixed  
Windows 10 - tamed  
and advice is always free

Peoples Choice 2013, 2014 and 2015-  
great service, agreeable charges and expert advice -



**GRANTVILLE MITRE 10**

**Open 7 days**  
**Mon - Fri 7am-5pm**  
**Saturday - 8am-3pm**  
**Sunday 9am-3pm**  
**Bill Humphrey & Gary Skinner**  
**5678 8213**

**Bass Highway Grantville**



**Wings & Fins**  
SEAFOOD RESTAURANT  
BAR & BISTRO

**Menu**  
Specialising in Flinders Island Crayfish cooked fresh to your liking.

Fresh Flinders Island Crayfish available for purchase at Wings and Fins Restaurant located at the Tooradin Airfield. Renowned Australia wide for providing only the best in fresh crayfish year round. Sourced from across the Tasman, Flinders Island is surrounded by pristine, untrammelled, deserted white beaches with crystal blue waters. Harvested by local fisherman, the fresh Crayfish are transported weekly by aircraft before being placed straight into live Crayfish tanks. The Crayfish are then monitored and cared for before being cooked to order. Priding ourselves on providing only the best in fresh Crayfish.

**FRESH CRAYFISH SALES**  
Tooradin Airport, 3260 South Gippsland Highway, Tooradin, Victoria.

Book Now...  
**Phone (03) 5998 3600**

**2 Course Seniors Lunch**  
**\$17.00**

**www.wingsandfins.com.au**






# Local Business News

## Make sure you make the Right Choice.

Cathy McNulty's obsession with numbers has helped her create a niche mortgage company that is powering ahead. Cathy, who has always loved finances and budgeting, ran her own bookkeeping business for some years.

After gaining a Diploma in Financial Services, Cathy became a broker in 2010. She ran a successful franchise before branching out on her own to start Right Choice Mortgages and Leasing in 2012.



The business operates mostly in Gippsland and South East Gippsland. It has an office in Koo Wee Rup, a satellite office in Lang Lang and does home visits.

"I saw how I could use my knowledge of finances and financials to assist people in achieving their goals of purchasing a home," Cathy says.

"I have always been obsessed with finances and budgeting, helping a lot of family and friends along the way. This industry plays to my skills, knowledge and passion. "Our personal service, caring nature and post settlement follow up differentiate us from banks and other financial services in the region."

With so many types of loans now available, Cathy and her team ensure their commercial and residential clients have the right information to find the right loan to suit their needs.

"I treat each deal as if it were me as the client," Cathy says. "I guide my clients through the whole process, whether it be refinancing, purchasing a new home or buying land and constructing.

"I do not charge a fee to my clients as the banks pay me a commission. My commission does not get added to my client's loans. Therefore, in essence, my service to my clients is free." Cathy also stays in touch with clients after they secure their finance to ensure that they are kept up to date and the loan suits their needs as their life changes.

**Why not give Cathy a call right now**

**(03) 5977 2024**

## The Waterline News

makes space available to all community groups in our distribution area and nearby for letting the community know about their activities and events.

**Send us your details**

Deadline - 1st of each month.

Distribute 3rd Thursday

**To ensure your message gets out there, make sure you get in before the deadline.**

**editor@waterlinenews.com.au**



## IMPORTANT NOTICE



**Bass Valley Computers (Grantville) has closed down and moved to Wonthaggi. If any of my old customers need help they can ring me on 0438 788 363**

**Ed Allison**

## BRIAN PAYNTER MP STATE MEMBER FOR BASS



Please contact  
my office if I can  
assist you

**talk to  
BRIAN**

✉ brian.paynter@parliament.vic.gov.au  
☎ 03 5672 4755  
📍 26 McBride Ave, Wonthaggi 3995  
and 51 James St, Pakenham 3810

Authorised & Edited by Brian Paynter MP 26 McBride Avenue,  
Wonthaggi 3995. Tel: 5672 4755 www.brianpaynter.com.au  
Funded from Parliament's Electorate Office and Communications Budget.



## Mortgages and Leasing

Located in LANG LANG and KOO WEE RUP

We also offer a MOBILE mortgage broking service; we can come to you at a time most convenient to you, including evenings in your home.

**Have you reviewed your Home Loan in the last 3 years?  
Did you know our service to you is FEE FREE\***



Contact our friendly team for your Home Loan Health Check.

Just answer 6 easy questions and we can provide a QUICK COMPARISON to show you how competitive your mortgage is.

**Ph 03 5977 2024**

\* There is no need for us to charge a fee as we receive a commission from the lender that you choose.  
This commission is not added to your loan. Our service is at a cost to the lenders and not yourself.

# The French Island News



## FRIENDS OF FRENCH ISLAND NATIONAL PARK

Secretary: Meredith Sherlock. Phone 0438 077329,  
email: [secretary@fofi.org.au](mailto:secretary@fofi.org.au)



### PROJECT DAYS

The ferry leaves Stony Point at 10.00 am on Saturdays, and we usually catch the 4.00 pm ferry back to the mainland. Our website has important information about purchasing ferry tickets. If you plan to come on a project day, please contact the Secretary well in advance to give us time to organise transport on the island.

#### Saturday 11 February:

Western Port Wader Survey, coordinated by BirdLife Australia. This is also a regular FOFI project day. Learn about waders from the experts. Please book in with Martin O'Brien ([m.ob5@icloud.com](mailto:m.ob5@icloud.com)).

#### FOFI Annual General Meeting

Sunday 12 February at 12.30 pm:  
10 Raymond Avenue, Frankston. All welcome. Please bring a plate to share. We would be pleased to receive nominations for some new faces on the committee.

**More details on: [www.fofi.org.au](http://www.fofi.org.au)**

## FRENCH ISLAND COMMUNITY ASSOCIATION

French Island Community Association  
Tankerton PO  
French Island  
Victoria 3921  
[secretaryfica@gmail.com](mailto:secretaryfica@gmail.com)



### EMERGENCY SERVICES

There is no regular police presence or ambulance service on the island. French Island has a Country Fire Authority (CFA). There is one fire engine stationed permanently on the island, next to the Community Hall on Tankerton Rd. CFA volunteers are able to respond to any kind of emergency. Calling 000 is always the best option in an emergency.

### NURSE ON CALL

For non urgent health issues islanders may utilise the Department of Health's Nurse on Call service:  
Nurse On Call 1300 60 60 24

### AMBULANCE SERVICES

Ambulance Membership  
Membership Enquiries 1300 366 141 (Mon-Fri 8am-8pm, Sat 9am-5pm). Membership is advised as Air Ambulance is used from the island. If local support is required ask Ambulance to request CFA support on the island.

### FIRE PLAN

All bushland residents should have a personal fire plan. The French Island CFA hosts annual information sessions which give concrete advice on this topic. The CFA is also happy to visit individual properties to further aid in the development of fire plans. As for all of Victoria, fire bans and other instructions issued by the CFA should be followed.

### POISON INFORMATION HOTLINE 131126

## French Island General Store and Post Office

From bread and milk to plumbing supplies, the store provides so many goods and services, we can't name them all here. In the meantime, whether it's distilled water for batteries or a fuel filter for the car, ring to find out what's in stock. Newspapers can also be ordered from the store with at least 24 hours notice.



**289 Tankerton Road, French Island 3921 (03) 5980 1209**

## FRENCH ISLAND FERRY

The French Island Ferry is a ferry service which runs between Stony Point on Mornington Peninsula and Cowes on Phillip Island, via French Island.

### The ferry departs from:

Stony Point Jetty on the Mornington Peninsula  
(Stony Point Station is a short walk from the jetty)  
Tankerton Jetty on French Island  
Cowes Jetty on Phillip Island

### Fares:

Tickets are available at the Stony Point kiosk, and also on board the ferry.

Please note: the French Island Ferry is not a myki ticketed service.

The following fares apply:

Adult: one way - \$13.00, return \$26.00

Child\*: one way - \$6.00, return \$12.00

Pensioner/concession: one way - \$8.00, return - \$16.00

Bicycle (additional cost): one way - \$4.00, return - \$8.00

\*Children aged under 4 years travel free.

\*Child fares are available for children aged from 4 to 12 years old.

**For more information, see the French Island Ferries website [http://interislandferries.com.au/fi\\_costs.php](http://interislandferries.com.au/fi_costs.php)**

## FRENCH ISLAND CRICKET CLUB 2016/17 Fixtures

January 21 & 28	- French Island
February 4 & 11	- Mt. Eliza
February 18 & 25	- French Island
March 4	- Mt. Eliza







# Figs



## Destination French Island

**Free ferry ride for over 60's every weekend (Phillip Island to French Island) & (Stony Point to French Island)**

**Free transfers when you arrive (to take you to the Figs Café/General Store)**

**Bike Hire available**

**Koalas close by!**

The French Island General Store & Figs Café is the heart of the community on French Island. As well as providing the Islanders with staples – mail, groceries, newspapers and gas bottles, it operates as a Licensed Café 7 days a week. New owners, Tanya, Leith, Clare, Neil, Brent and Samantha (the Le Serve family) and staff are providing visitors with delicious lunches, cakes and take-aways using local produce when available, are serving wine from French Island Vineyards, lattes and cappuccinos. The Store sells a range of local produce, including honey, pickled goods and souvenirs. The Store is offering free shuttle bus transfers for customers on weekends and public holidays for those arriving by barge, or ferry from Stony Point or Cowes when they book for lunch at the Store or make a bike hire booking, or who are staying the night in the Figs Cottage. This is an attractive prospect, as transport currently doesn't exist for the general public, so being picked up as you arrive to the Island is fabulous. If that doesn't grab you, it's also 'free' to get there for over 60's with Inter Island Ferries from Cowes and Stony Point on weekends and public holidays, so destination French Island is a very affordable option for those wanting to experience the Island. For total convenience visitors can wine, dine and stay to fully enjoy the relaxed vibe and hospitality that the Store has to offer as accommodation is available. French Island is an eco-tourism destination providing nature based experiences for visitors to explore the great outdoors, to see the koalas, echidnas and bird life and experience what's on offer and it is the perfect destination for nature lovers, those who enjoy walking, cycling, camping and exploring pristine beaches. Enquiries for bike hire, café bookings, accommodation and to book your free transfer call 5980 1209 or email

info@figsfrenchisland.com.au. You can also visit their website [www.figsfrenchisland.com.au](http://www.figsfrenchisland.com.au) and check out and follow the Figs Café/French Island General Store on Facebook/figsfrenchisland



## FOFI News



The newsletter of the Friends of French Island National Park Inc.

## FAREWELL

A farewell party for Jane Unwin and Alison Pitt was held at Tankerton Hall on Saturday 8 October.

In recognition of their outstanding contribution to French Island Landcare over the past 17 years, FOFI was pleased to give them A Year on the Farm: Recipes and Stories from My Tasmanian Tree Change by Sally Wise.

As Jane and Alison are moving to Tasmania, this seemed a highly appropriate gift!

## CONDOLENCES

We extend our sympathy to Walter and Bette Mitchell on the death of Peggy Mitchell in October at the age of 94.

Peggy was described by Mike Carter as "an icon of the birding community" and she and her husband were also very active in the Mornington Peninsula Field Naturalists.

We are also saddened by the recent deaths of long-time member David Wilson, who joined FOFI in 1990, and Dudley Gross, who was a regular member with his wife Noel in FOFI's early years. A memorial plaque for David and Dudley has been placed in Sherbrooke Forest by the Friends of Sherbrooke Forest.

## FRENCH ISLAND NAMES!

Blue Gums is the former SEC land on the south coast, now included in the National Park (261 ha).

The original house, shearing shed and chicory kiln remain as semi-ruins.

Blue Gum Point lies midway on the remote south coast between Freeman Point and Spit Point further east.

There are no longer any Southern Blue Gums (*Eucalyptus globulus*) at either location.

Red Bluff is the southernmost tip of Blue Gums, with Stockyard Point to its east, not to be confused with Stockyard Point at Jam Jerrup with its own Red Bluff to the north. Spit Point is the easternmost tip of the island.

It was once called Sandy Point, but thanks to the name change is no longer confused with Sandy Point at the base of HMAS Cerberus. And while you can look out over the bay from The Pinnacles, you have to go to Cape Woolamai to see Pinnacles Lookout!

**These FOFI News were compiled by Meredith Sherlock with contributions from Chris Chandler and Geoff Lacey.**



Sea-Eagle on the north coast

Andrew Browne

**New French Island Visitor's Guide**

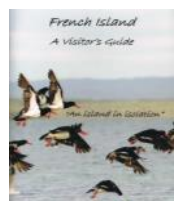
**Now available:**

**From the General Store**

**Or Email the author**

**Christine Dineen**

**dineenc@optusnet.com.au**



**Notices for the French Island section of  
The Waterline News should be sent to:  
editor@waterlinenews.com.au  
by the 1st of each month.**

# The French Island News

## French Island Landcare

### 2017 Start Up Party

All welcome

When: Sunday January 22 12.30pm

Where: John and Barbara Coulter's in  
Bayview Rd.

BYO Raw Pizza, drinks and chair.

As in the past, bring your own raw pizzas to be cooked in the  
Coulter's pizza oven and share them around.

Dessert provided.



**FRENCH  
ISLAND  
POET'S  
CORNER**

Submissions Welcome

editor@waterlinenews.com.au



## FRENCH ISLAND LANDCARE

### Nursery

Volunteers are always welcome at the

Nursery on Wednesdays from 10am - noon.

Contact Terri: 0413 088 527

Email: [filandcarenursery@gmail.com](mailto:filandcarenursery@gmail.com)

## French Island Australia Day Weekend Market

When: Sunday, January 29

10am to 2pm

Lots of wonderful home-made treats, fresh  
produce, arts and crafts, and great coffee  
and food for sale.

Bring your friends and family.

Stall holders: Book your stall with Glenys  
on 0437 914 663 for only \$5.

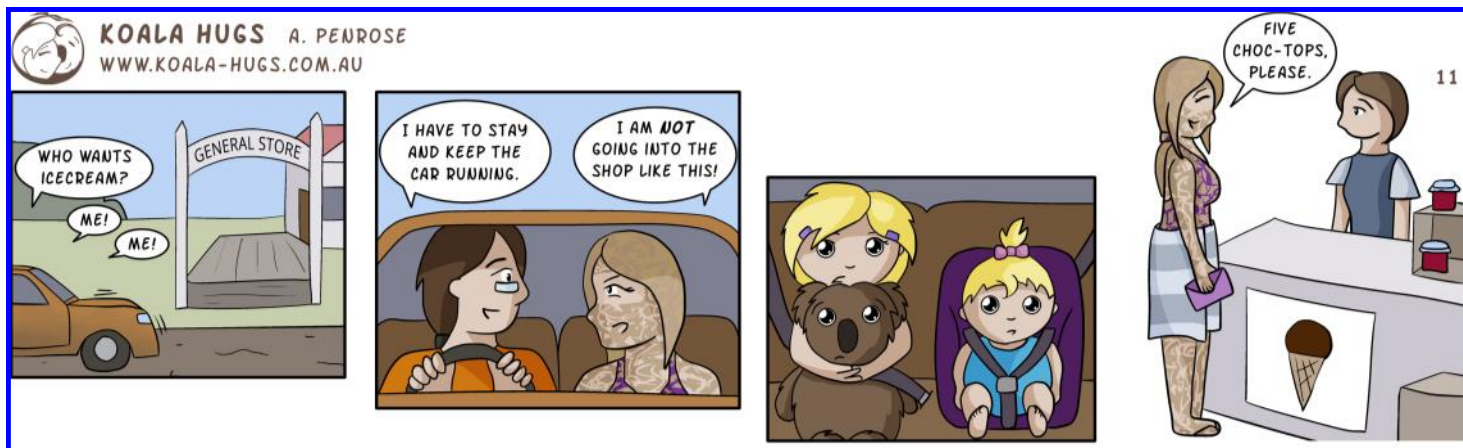


### Two kinds of love

"Between a man and a woman  
Are two kinds of love"  
My husband said to me  
"The first kind is like  
A brilliant, burning sun  
That is the beloved one.  
But eventually the sun  
Burns itself out  
Leaving nothing  
But ashes and misery.  
(Of that kind of love  
I am gratefully free)

Burning Modestly  
It's existence will always be  
Burning through time  
Growing steadily  
That is the love  
I have for you  
And the love  
You have for me -  
For which I will settle willingly  
My husband said to me

"The second kind is modest  
Compared to the brilliant sun".  
Like a candle  
It flickers and burns  
Growing with us  
Wherever we turn -  
A little flame growing  
Brightly and steadily  
Nothing spectacular,  
All consuming,  
Like the sun



# VAN STEENSEL TIMBERS

EST 1965

EXPERT ADVICE AND  
GOOD OLD FASHIONED SERVICE

DELIVERY ALL AREAS

**TIMBER-HARDWARE-PAINTS-TOOLS-WATER TANKS**

Cnr. Bass Highway & Glen Forbes Rd, Grantville 03 5678 8552

421 Princess Hwy, Officer VIC 3809 03 5943 2371



# The Bass Coast Post in Print

## Bass Coast Post



Online news, articles, columns, photos by and for Bass Coast residents.

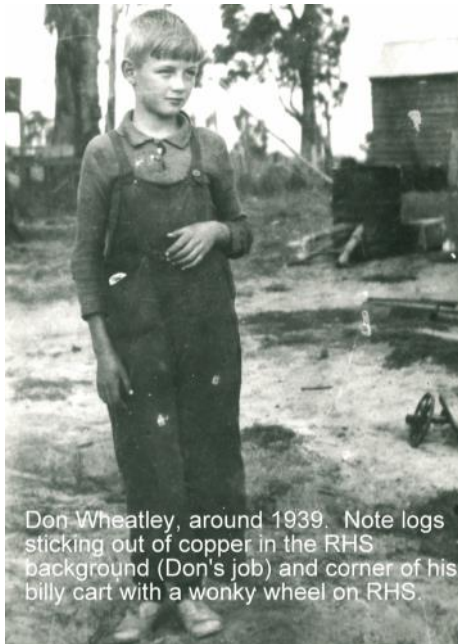
### Meet the Wheatleys

**Tony Hughes**

**This article is based on an interview Don and Irene gave to Irene Williams and myself in December 2013. A copy of the full interview together with relevant photographs are in the Wonthaggi and District Historical Society's archives.**

Grantville, how lucky are you for having these two as part of your community, treasure them!

Don's parents, Hubert and Mary, purchased one third of 116 acres of a bush block at the Shunt-Off, Grantville not long after Don was born in 1928. This makes Don, 88 years young and still going strong. Younger brother now deceased, Ted, was born in 1936. The early sawmill workers camped in huts on the Grantville beach,



Don Wheatley, around 1939. Note logs sticking out of copper in the RHS background (Don's job) and corner of his billy cart with a wonky wheel on RHS.

presumably they travelled to and from work on the sawmill railway. Lorna Malone's father worked in the sawmills. Steamers came to both the Queensferry and Grantville jetties.



Front of original rough bush timber house built by Hubert Wheatley, around 1930. The photo taken about a few years later shows the addition of windows and the front doorway. The timber house was the wind from blowing directly into the kitchen.

Hubert built a rough, bush timber, three room home with a corrugated iron chimney, timber block floor, no windows or door, only sacks? There was no electricity for lighting or power, a refrigerator or mains water. When water was short, Don and his dad would fill 44 gallon drums at the local stone quarry on the Almurta road. The quarry can still be clearly seen beside the road. A spring on the beach to the LHS of the jetty provided the town with fresh water. The hotel had two wells on top of springs on their property.

With Hubert having a Melbourne based job, Mary and Don were left to fend for themselves for lengthy periods. Two rooms and an entry alcove were added when Hubert's parents, Ralph and Emily, came to live. The alcove stopped the cold South Gippsland wintery westerly winds blowing straight into the kitchen, it was a huge and very welcomed improvement. As Mary didn't drive, Don helped with shopping at Len Tilley's Grantville General Store and Post Office. Bread was

delivered by Bob Bird and travelling hawker, Shah, sold clothes from his horse drawn wagon. When food ran short, Mary and Don survived on bread and dripping. Mary would make/mend his clothes and enjoyed craftwork and knitting. She had a charcoal iron complete with bellows. They enjoyed fresh eggs when their hens were laying, there was no house cow as Hubert was certainly no farmer. Mary had an arrangement with the Cumbridge's for fresh milk on school days. Don would drop off an empty billy on the way to school and pick it up on the way home, it was a real nuisance trying to lug it home without spilling any. When Cumbridge's milk was not available, they used powdered milk.

Other goods came by train to Almurta Station from Melbourne, sometimes the meat was flyblown and inedible. Don trapped rabbits for fresh meat and still enjoys a good rabbit. A trap he was trying to set one day in a paddock, went off catching his fingers. Not strong enough to release its powerful and painful grip, he walked back to the house and got a lever and got his hand out.

Don walked to school, located near the entrance to the Grantville tip, meeting kids from the Adams Estate along the way. It was a long, tiring walk and a real worry when bushfires were about.

While Don was still young, Hubert replaced the rough timber shack with a new house using recycled timber from the old Westernport Hotel. One day while mucking around, a broken beer bottle at their place caused a deep wound in Don's left foot. Mary pulled the broken glass out, bathed the wound and bandaged it, no doctor involved. Dr Sleeman at Wonthaggi was the only doctor in the district at the time.

After Hubert showed Don how dangerous detonators were, he tried to warn his mates when they found Silver detonators in the quarry. Not heeding his warning, a match was put to one leaving Ken Petersen less a finger and thumb; fortunately, Don only suffered severe ringing in the ears for a while.

Continued next page

### Oz Catz Boarding Cattery - The Gurdies

Ph : 03 5997 6414 Mob: 0418 549 987 Email: nolakim@optusnet.com.au  
Cats Only - Limited Guests - Large Rooms - Pick Up & Delivery - Reasonable Rates



  
Bass Valley Handyman  
No job too big or small

**Scott Longden**  
We always call you back

[www.bassvalleyhandyman.com.au](http://www.bassvalleyhandyman.com.au)  
[slongden@bassvalleyhandyman.com.au](mailto:slongden@bassvalleyhandyman.com.au)

**0419367705**

Servicing Bass Coast and South Gippsland



# Special Feature

## Meet the Wheatleys, continued

To survive, hard work was the order of the day. Don helped his father cut wood into 2 foot lengths and pack into 40 cubic feet lots for the railways. To get extra money, Don would sometimes fill two carriages at the Almurta siding. Each carriage took 16 ton or 800 cubic feet of 2 foot logs, he was expected to fill both by himself in a day. He always managed one but didn't always fill two, it was bloody hard work. Don and his dad cut and sold firewood, posts for the coal mines at Kilcunda and Wonthaggi, piles for the Corinella Jetty and contract fencing, mainly over winter.

They made charcoal, a hard, dirty job especially during the wet. It was sold to both the Bayles Factory and local truck operators, they used charcoal instead of petrol in their gas producers during war fuel restrictions. During WWII, petrol was rationed to 1 gallon (4.54 litres)/ week, kerosene was forbidden to be used for vehicles and primary producers needed a permit to get 40 gallons of fuel for 6 months. The Army put an odorant in their fuel so it would be detected if "acquired" and many found ingenious methods to use kerosene away from towns, switching to petrol if they thought they might be detected as burnt kerosene could easily be smelled.



After six years at the Glen Forbes Cheese Factory working 6 days/week, Don resigned and joined his father clearing timber for two to three years. During this time, Don purchased an old 21 foot boat called Valda and tried professional fishing as well. The fish were put into fish boxes without ice or refrigeration and sent to the Melbourne Fish Market where they sold for around two pence (cents)/pound. When the Bay's fish

stocks dropped off, probably due to overfishing, he gave it away.

In 1951 at age 23, Don "met this very nice girl named Irene" on a bus going to the pictures in Wonthaggi; she was really easy to talk to. They talked a lot more, got on really well, fell in love, married in 1953 and went on to raise four strapping boys. Irene worked in the Grantville General Store and Post Office before they married.

In those days, there was very little traffic on the main road which was gravel, no public transport, just a service bus run. Grantville seemed to be too far away from Wonthaggi to get things done. Anderson Hill, which was still gravel in 1951, had trees meeting over the top of the highway.



Over the next 40 years, Don drove a local bus for Freddie Webb, was a night shift test driver at the GMH Proving Grounds, Lang Lang and carted concrete for Donmix in a truck he bought from Johnny Motton. The truck was sold to Gary Blackney when he retired. During his time at GMH, they purchased a 24 foot Couta Boat and operated fishing charters on Westernport. The township of Grantville struggled to survive for many years, but through the efforts of the Wheatley's and others, it is now a thriving seaside town with a bright future. Jimmy Smith, the Bootmaker (where the BP servo now stands), the Cumbridge's, Bob Bird from the bakery and a lot of others would be proud to see it.

Don and Irene are both well, enjoying life and still happy to be part of Grantville's wonderful community, may they enjoy many more years to come!

**Tony Hughes**

**We have some more great photos, which came with this story, and will publish them as soon as we can.**



## Fisherman's Cottage Museum Tooradin



The museum is located in Foreshore Road on the edge of Sawtells Inlet (Melway ref 144 A6) and is open Sundays from 12noon to 4pm, or by arrangement.

We open the Museum on Sundays from noon until 4pm.

Entry is \$3 adults, \$2 concession and 50c for children. The phone number at the museum is 0359983643. If you leave a message we will get back to you.

## Lang Lang & District Historical Society



The Lang Lang Historical Society meets on the third Tuesday of the month at 1.30pm at the Lang Lang Historical Display Centre, in Whitstable Street, Lang Lang.

The Centre is open each Wednesday 11am - 3pm or by appointment  
Secretary Peter Hayden 5997 5114

**www.flyawayscreens.com.au**

**Decorative Doors**

Window Fly Screens  
Fly Screen Doors  
Diamond Grill Doors



Stainless Steel Doors  
Guard Mesh Doors  
Pet Doors

**Richard Johnson**

**Mobile:0409 590 055 Phone:5659 0055**

**Re-meshing available**

**Welded Security Doors and Window Screens**

**Email:flyawayscreens@gmail.com**



# VET

CLINIC

**WONTHAGGI**  
5672 1044

**PHILLIP ISLAND**  
5956 7262

**INVERLOCH**  
5674 2408

mail@wonthaggivet.com.au



# History

## LIFE AT POWLETT RIVER



It was New Years Eve. The canvas township of Powlett River, not quite a month old was about to see a New Year begin. The mail had arrived about half past 7 o'clock and the men had, according to custom, looked in at the little ordinary house window at the post office to see if there were any letters from home. Some were still standing in the street absorbed in their letters, others were reading the newspapers. Some stood outside their tents washing clothes.

A miner seated outside a tent door was playing a tune on an accordion. A young man, thick set and athletic suddenly stood on his head and getting to his feet again said to the accordion player "Make it lively mate." Louder and faster sounded the accordion. A lane was formed by the men and down the lane the thick set young man revolved in a series of hand springs. "Hear, hear" shouted the men in encouragement. The performer was once an acrobat in Wirth's circus.

It was a still night, just the night for outdoor singing. It had become too dusky to permit the men to indulge of games of skill such as the miners love. "What about a song?" inquired a voice? There was deep silence for a moment and then a voice full of expression, a miner began "Starlight". It was the first item in a long programme of songs and recitations. Mr. J. McInernay the president of the local branch of the Coal Miners Union took his natural position as chairman.

The New Year crept into the camp in a most unobtrusive fashion. The mine whistle blew its shrillest, loudest and longest note and great must have been the consternation of the kangaroos and wallabies in the surrounding scrub. They had never heard the like of that noise.

On New Year's Day the camp awakened to the fact that the wives of two of the miners had arrived in the coach on the previous evening. Each had a baby in her arms and accompanied by their husbands they walked up the strange looking Bourke Street to see the mine, the magic force that had brought them to so strange a locality. A father came along accompanied by his three little boys, round eyed with the wonderment of childhood.

Asked how he liked the camp, the oldest boy said "Grand." "That's because there is no school here," explained his father, laughing. There are about a dozen children in the camp now and when more families arrive, a school will be a matter of necessity. Men who bring up their families are allowed two tents by the Government. These tents are forming a new street to the north of the present camp.

From two or three miles west of the camp the sea beach can be reached after a rough walk through the scrub and fern and bayonet grass. It is a desolate looking beach for the wind has piled up the sand in high cliffs and has twisted; half buried and killed the ti-tree. Tremendous rollers dash in upon the beach which slopes steeply into the sea, making it a dangerous place for bathers. The beach was a picnic ground for some of the miners on Saturday. They hunted for crayfish in the pools among the rocks and sought to spear them. They fished for bream and rock cod and in the scrubby plains and sand hillocks shot hares.

From "The Border Morning Mail and Riverina Times" Tuesday January 4th, 1910 The archives of Bass Valley Historical Society

**Libby Skidmore**

**Bass Valley Historical Society**

**New members always welcome, bookings and information from Libby Skidmore**  
**eskidmore@dcsi.net.au**

## LOST FAMILY GRAVE FOUND FOR PARKER FAMILY.

**Noelene Lyons**

Wonthaggi Cemetery Trust received a phone call from a family in Melbourne who



wanted to bring their 90 year old father to Wonthaggi to locate the burial site of his father - Graham Parker, a miner that died from black lung disease in 1933, and his infant sister Joyce Kathleen Annie Parker that died at the age of one in 1927. The Burial Register recorded that his father Graham Parker and sister had been buried in the Roman Catholic section of the Wonthaggi Cemetery.

This was a great surprise to the family as they had all been raised as Presbyterians. The location was recorded as RC (Roman

Catholic) Section 2, Row B Grave No's 71 & 72.

That is where the problem started. Our old maps only number graves up to 64. The only way to find them was to literally walk through the entire RC section and hope that the graves had been marked at the time of burials.

After spending a few hours walking the RC Section and remembering to think outside the square to locate these old burials and considering the Burial Plans showed grave numbers only to 64, and that Mr. Parkers grave was recorded as no.'s 71 & 72 By land marking monuments that did match the Burial Register that were recorded near the Parker Burial sites this grave was eventually located....

When the Parker family arrived on site and were taken to the grave site. It was found unfortunately the infant Joyce's grave was not marked or monumented, but Graham Parker's was, sadly a grave in very poor condition.

This was a very emotional discovery for the family, but was something that Mr Parker Jnr wanted to do before he passed. He only remembers seeing a photo of a tiny infant mound of dirt and was not allowed to go to his father's funeral. Mr Parker Jnr and his two daughters Jenny & Helen are the last remaining direct family members and are now taking steps to restore the grave and memorialise his little sister Joyce.

As we work through the Burial Register we are slowly able to locate these lost graves and put a name to them.... its a very slow process but with YOUR HELP and family enquiries over this year we have been able to help many families find there lost family graves. The re-numbering of our historic maps in all sections / area will now enable us to locate many family's graves previously not known.

If you know of a family grave and you can name it in the Wonthaggi Cemetery that is missing the headstone, or you want to locate a family member buried please contact me so as I can help you locate / or have the grave correctly recorded.

**Please contact Noelene 56724739 or email noelene@dcsi.net.au**

### Place names:

Wonthaggi is a rural township between Western Port Bay and Wilsons Promontory, 110 km south-east of Melbourne. According to Bunce's Language of the Aborigines of the Colony of Victoria (1859) Wonthaggi is an Aboriginal word meaning borne or get to bring. Before being named, the area was known as Powlett.

# On the road - places to go

## Port Welshpool



**Port Welshpool is a scenic coastal town located between the dairying community of Toora and historic Port Albert.**

The Strzelecki Ranges are to the north of town, while Wilsons Promontory is around an hour by road away.

Lewis Street runs parallel to the town's main beach, separated from the coast by a flat grassy foreshore with walking tracks, picnic facilities and a playground.

At the western end of Lewis Street is Long Jetty which is over a kilometre in length and was built in 1938. It was closed to public access in 2004 due to fire damage, but there are plans to restore it.

Port Welshpool's small commercial centre is located towards the eastern end of Lewis Street and consists of a hotel and general store. Directly across the road is the town's wharf area which is a base for a tourist cruise service to Wilsons Promontory, ocean fishing vessels and some cargo boats which operate between Tasmania and the Gippsland coast.

Five kilometres north of Port Welshpool on the South Gippsland Highway is the service town of Welshpool which features a hotel, food outlets and service stations. On the corner of the road to Port Welshpool are attractive gardens which include an information shelter, war memorial and a giant black anchor.

For a scenic drive through the mountain ranges to the north, start at Slades Hill Road which meets the South Gippsland Highway in Welshpool. Follow this road north up through the rolling hills and enjoy the scenic views across grazing land, farmland and down to the coast. Following the signs to Agnes Falls will result in a 10 kilometre journey ending up at the Agnes

Falls Scenic Reserve. There is a pleasant picnic area which fronts the Agnes River, while an easy 200 metre stroll through the Blue Gum forest ends up at a couple of viewing platforms that overlook the falls. Following the road down towards Toora passes through a wind farm with giant turbines perched high on the surrounding hills, while the Silcocks Hill Lookout offers scenic views down to the Toora township and the coast.

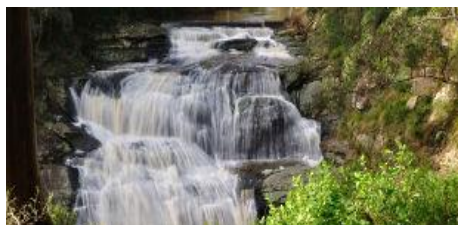
To the west of Port Welshpool is Barry Beach which is situated on a peninsula of land at Barry Point. There is no public access to the coast from here, and the area is used as a base for oil and gas rigs in Bass Strait.

## Port Welshpool Maritime Museum



Located at the first house built in Port Welshpool, the museum features marine items, maritime relics and other artifacts of historical significance

## Agnes Falls



Hidden within the Strzelecki Ranges, just 10 kilometres from Port Welshpool, the meandering Agnes River cascades over rocks into a deep picturesque gorge at the Agnes Falls Scenic Reserve. At 59 metres, Agnes Falls are the highest single span falls

in Victoria. Take the short 200 metre stroll along the walking track from the car park to viewing area. From the viewing platform, enjoy the spectacular view of the gorge.

## Great Southern Rail Trail

This 74 kilometre smooth gravel rail trail runs from Leongatha to Port Welshpool. South of Leongatha, it passes through



gently undulating lush dairy farmland, areas of remnant bush and lowland scrub. It climbs from the foothills of Fish Creek to the peak of Mount Hoddle and then down a steep descent through dense forest with magnificent views of Wilsons Promontory on its approach to Foster. The trail then flattens out, passing through Toora and Welshpool, finally reaching the coast at Port Welshpool.

For more information, visit the website <http://www.travelvictoria.com.au/portwelshpool/>



**Evans Petroleum  
Gippsland Pty Ltd  
Phone (03) 5662 2217  
Fax (03) 5662 225**

**Depots:  
Leongatha Traralgon Sale**

[www.evanspetroleum.com.au](http://www.evanspetroleum.com.au)



**Book now**

## The Rustic Cacao Factory and Cafe

*LochVillage*

*We use the old-fashioned way of making Handcrafted Drinking Chocolate with raw cacao and Australian spices.*

*Enjoy a "free tasting" at the Cafe.*

*The Rustic Cacao Factory and Cafe also offer tasty meals on the barbecue and you can give your lunch a kick with any of 20 varieties of the World's hottest chilli sauces.*

**Open: Friday, Saturday, Sunday and Public Holidays  
10:00 am to 4:00 pm ~ Booking phone: 0478 899 821**



# Our people

## LOCH'S NEWEST AUSSIE



**Loch's newest Aussie, Diana Dan (second from left) receives her Australian Citizenship certificate at a recent Naturalisation ceremony.** Diana was asked on her citizenship application - *What brought her family to Australia?*

"When I was a little girl my family arrived in Melbourne and we lived in a beautiful house in South Yarra for a couple years, later on we returned to Spain. I always remembered Australia fondly and I made the decision to visit Melbourne and my old school one day.

The day I arrived in Melbourne airport I was so overcome by my emotions. And some times lives can change very quickly. The next day, I was at Mc Donalds trying to purchase something to eat but my clumsy English didn't help to make my order, so a man behind me helped me

kindly. Now he is my husband and we are happy living in this beautiful part of Gippsland.

***What brought you/your family to South Gippsland?***

My husband and I were looking for a nice place where we could manufacture our own products, raw cacao drinking chocolate and chocolate & chilli sauces. So we were lucky enough to find the General Store in Loch, which was for sale at this time. South Gippsland is a nice and close destination for those who want to escape from the stress of Melbourne.

On weekends, many travellers and tourists stop in Loch on their way to Wilsons Promontory. Our Café and manufacturing premises at "The Rustic Cacao Factory and Café", in Loch, is a good site to have a handcrafted hot chocolate and enjoy the warm Gippsland hospitality.

***What do you/your family enjoy about South Gippsland?***

South Gippsland is a beautiful part of the Victorian countryside with rolling hills and a relaxing rural atmosphere.

The friendly community of living in a country village, as Loch Village, is another very important fact which attracted me and my husband here.

The local food and wine are also good reasons to choose South Gippsland.

Diana recently had to make a rush trip back to Spain to be with her mother who broke

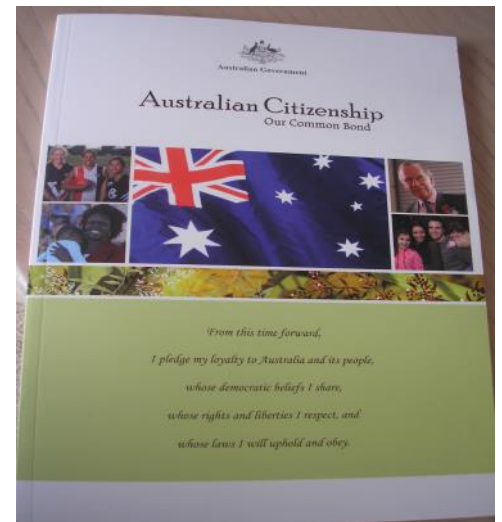
her hip in a fall.

She should be back now and will be pleased to welcome you at the Café. If you haven't visited the Rustic Cacao Factory and Café in Loch yet, you are in for a real treat.

The food is superb and their range of Chilli sauces and other condiments is amazing. When you have a meal there you get to choose your own sauces from the huge range on offer.

Call in and say hello to Diana, or her assistant, Aria, who loves Spain, is learning Spanish and will be happy to see you and provides great service with the range of food on offer.

**Roger Clark**



**Burgess Motors**  
Automotive Repairs  
Phone 0455 544 194  
Lot 2 Fact. 4 Grantville Dr.  
Grantville Vic. 3984

Cranbourne Exhaust Pty. Ltd. (Inc. in Vic.) trading as  
**FASTFIT**  
CAR CARE  
Standard, custom and performance exhaust systems  
Complete brake and suspension service  
Full vehicle repair service, log book servicing  
**Ted Watson**  
222 High Street, Cranbourne 3977  
Telephone: 5996 4555



**Bass Concreting and Excavation**  
Your local contractor No job too big or small  
Excavators, bobcat, tippers, all tickets and insurance  
Give Wayne a call for a quote 0433 802 212



**Block Slashing** Russell Sanders  
0418 549 499





## POET'S CORNER

Submissions welcome  
[editor@waterlinenews.com.au](mailto:editor@waterlinenews.com.au)

### The Other Dimension

The unseen tide  
 The inner sea  
 Wells up inside  
 And wrecks the walls  
 The buffer zone  
 Of the resilient self

Gone is the mask  
 Bare is the solitude  
 Bathed in memories  
 Changing the form  
 From time to time

Swimming with eyes closed  
 In the inner sea  
 Of the mind

Looking for solace  
 That will quieten the waves  
 And the water  
 Will be smooth again  
 A mirror finish  
 Of the unseen tide.

Judy Bartosy

### Homo Surfiens

Hover on water  
                     young man,  
 arms outstretched like wings  
 above your board. You can  
 glide with the seas  
 as gulls above you  
 surf on waves of air.

Only they're  
 in their element.

You dare  
 to pit your skill  
 where you're not meant:

To walk on water,  
                     that's your will.

Will power,  
 wit power,  
 muscle power,  
 combined against the muscle of the sea.

It bashes up old rocks  
 and flattens several faces of the  
 earth.

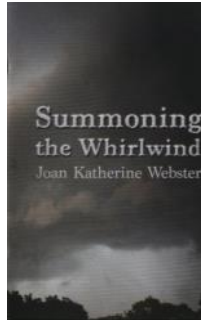
You twist and turn and mount.

In your stride  
 you ride  
 its power like a toy.

There has evolved another species.  
 Darwin would have found a better word  
 for this maligned thing -  
     half boy, half king;  
     half beast, half sea-bird;  
 part dolphin: lives on surf ...  
     that plays the sea by day  
     and land by night;  
 that challenges the might of waves,  
                     and wins,  
                     yet has no fins.

(c) Joan Katherine Webster

### BOOK REVIEWS



Joan Katherine Webster  
 OAM is an award  
 winning author and  
 journalist, a satirist, folk  
 historian and bushfire  
 safety trailblazer, whose  
 poetry has been widely  
 published, performed and  
 broadcast in a variety of  
 media and received a  
 number of awards.

Her poetic styles range from traditional  
 rhyme, through satire and song lyrics and  
 children's nonsense rhymes to iconoclastic  
 religious and feminist free verse.  
 She believes that poetry should be readily  
 differentiated from prose and rhythm,  
 imagery and the awakening if insight and by  
 the stimulus and delight of subtle rhyme.

<http://www.joanwebsterauthor.com>

### Reviews

Joan Katherine Webster's poems are chock  
 full of thingyness; of a tangible Now within  
 time; of commonplace objects rubbed into a  
 sacred gloss. If she summons the whirlwind,  
 it will try to whirl away the pleasing solids  
 of our daily lives, for she has lived with  
 them, know them and touches them. Her  
 poetry sparkles for all of us.

Chris Wallace-Crabbe

When I read *Summoning the Whirlwind*, I  
 was reminded of the words of the US  
 author/radio broadcaster, Garrison Keilor  
 who said; "A poem is not a puzzle that the  
 dutiful reader is obliged to solve ... It  
 should render the gravity, the grace, and the  
 beauty of the ordinary world, thereby  
 lending courage to strangers." Joan  
 Katherine Webster's work is accessible to  
 all and the intellectual and emotional  
 content of this material produced by her  
 creates an affinity of being with readers who  
 never expected that anyone else shared their  
 feelings or perceptions. Thus, she lends  
 courage to strangers.

Noel Tennison

Here is a poet in love with language,  
 absorbed in the whirlwind of "the mystic  
 skill of rhyme", rhythms and subtle  
 imagery, "the quick-quick tick / against  
 slow tock", casting her hypnotic spell over  
 hills, street crowds, music and seascapes,  
 "The Woman Alone on the Beach"  
 "counting the waves crawl, crabwise".  
 Be prepared to be equally absorbed.

Rob Wallis



Joan Webster had a  
 holiday house on Phillip  
 Island for a number of  
 years and a number of  
 the poems in this book,  
 including *Homo  
 Surfiens*, were written  
 there.

*Summoning the Whirlwind* is available for  
 purchase on Joan's website:

\$15 + \$3 postage

<https://joanwebsterauthor.com/poetry-2/>

### HAIKU

Thoughts in miniature  
 A haiku is untitled and  
 unrhymed.

A seasonal word or reference  
 associated with nature should appear in the  
 haiku, and contrasting images may be used.  
 Usually the first line stands alone while the  
 second and third connect to give an aspect  
 of that image.

俳句

haiku

### Balance

old, barren peach tree:  
 shade, your summer gift, not fruit:  
 and mulch in winter.

cold winter hardness  
 conceals mysterious seed births  
 while fragile shoots rise

Birdsongs summon dawn  
 rejoicing the dark old sky  
 into renewed youth

currawongs fly by:  
 neither larder nor hardware,  
 yet sated and housed.

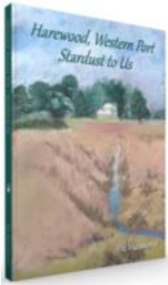
Rebecca Maxwell  
 Haiku Group

Society of Women Writers, Victoria





## BOOK REVIEW



Last month we promised a another perspective on the new book -

Harewood, Western Port Stardust to us.

Local author Jim Mynard has allowed us to print the text from his speech at the book launch.

### Launch of Stardust

I first decided to write a book when I was going on 18 and living at Catani.

My focus was to write a story around Harewood Maines, the 'ghost house' a place in which I was fascinated.

It was to me as sacrosanct as a monastery. No way I would get into either.

So the story didn't eventuate.

Then Hughe Ballas bought Harewood House and the airfield.

He offered to take me for a spin in his Cessna – I think it was a Cessna.

I am scared of heights and it was my first flight. Boy, I was really scared.

But it ended up a lovely experience, despite my nerves.

Up over Western Port Bay and, to top it off, at last I was inside Harewood House ..... having a cuppa with Hughie.

It was awesome ...The house, not Hughie!! It is a bank vault of history. And of course ..... Pat has told us where it all started.

I travelled past Harewood House probably at least a couple of times a month during my teens. I had this dream I would one day buy the place. There was no hope.

But, second best, Pat did, and has maintained the house as a museum, a home enfolding our local history and a shrine of local living.

And there is a history of community leadership in this place.

We've all got a psychological ownership of the grand old home.

And with 'Stardust' Pat McWhirter has added to the Lyall diaries and other books of knowledge in the Harewood Library.

We thank her so very much for that and for her book, which I put in the classic range.

I found two Aboriginal axes, one at Leongatha, and one at Stockyards Point, Lang Lang, and kept them, but I always felt they were not really mine, so years ago, I put them in the Harewood collection where they rest in peace.

Because here is where the last remnants of a once proud nation from our locality found refuge from a not so pleasant invasion of their country.

They are not forgotten in 'Stardust'.

Their plight was sad, and perhaps wrong, but when I read political science, I found only a handful of countries had not been subjected to some kind of invasion.

And fewer where a whole nation died.

Perhaps the Canaanites, and American Indians, and the Mongols made a fair job of a few nations in their time.

Mostly though, indigenous people remained and although their defeat changed their way of living they assimilated with their invaders.

And thus changed their way of being because of interbreeding with their former enemies.

Not so in our locality. Not so at all. They were all driven out.

This is my way, I suppose, of excusing what happened because our forebears built us this land of milk and honey.

And as Bumper Gee once said to me, we are not about to give it back.

We cannot change what happened, but we need to think about it.

My feelings about my local area, my true home place, the Kooweerup Swamp, are well enough documented, along with my concerns.

But Pat has a gem in 'Stardust' because she tells the story as I feel I know it, about a place I love, irrespective of the ups and downs.

William Lyall built on high land and so Harewood will always be a monument to our pioneers and the library, a treasure store of local history.

Nearby Kooweerup Village, is on land not so high.

And also has a priceless collection of local historic artefacts and documents.

My one request (and I take advantage of this

talk to ask it) is for those responsible for its care to store such a valuable collection above the water line.

If this doesn't happen it will be lost forever. Far more quickly than the time it took for 'stardust' to gather in the making of Harewood.

'Stardust' is a valuable addition to the bank of words around us here today.

And not only the written words in books in this collection of life and of how to live life. Or the Aboriginal artefacts here, to show us just how they lived, and how little they had to wield in defence of their country.

But the social and community aspect of Harewood's past started by a man of vision is in the air around us.

We have a past of wealth, good living, writing, reading, and piano music among the trees on a summer evening.

Yet interludes of quietness in the passing of time as we all drove back and forth past the stone gates of Harewood House.

Here are recorded memories of life at Harewood as time passed its keepers by.

When I read old documents telling of the social gatherings among these trees and in this now ancient home, where piano music was a way of life, I am filled with nostalgia. But now, from time to time, I read in contemporary documents about gatherings at Harewood, made possible by Dr Pat McWhirter's generosity.

Her embracing of her community with an open door attitude at Harewood means the stardust still falls around us and who knows what it will gather to be?

Congratulations and thanks Pat, for a great book, and a worthy addition to Harewood House.

**Jim Mynard**



Jim Mynard's own book, *On The Swamp* is a semi fictional novel telling the story of the once pristine three hundred square mile Kooweerup Swamp south east of Melbourne in the Western Port area, is available from:

<http://www.glenowordbooks.com/>

**Partylite & Candles Accessories**  
Decorate, Celebrate, Illuminate  
**Vicki Thurgood**  
Independent Partylite Consultant  
vmcottier@yahoo.com.au  
25 Moorings Place  
Corinella Vic 3984  
Home: 03 5678 0160  
Mobile: 0407 327 066

**Paint & Sip** **CORONET BAY**  
Fun • Relaxing • Inspirational  
**Absolutely NO experience necessary..!**

- Create a painting in just one 3 hour session
- Choose an image from our extensive catalogue or BYO painting idea • All materials supplied
- BYO drinks • Groups welcome • Max. 12 per session

**Catalogue & Bookings: [www.paintandsip.com.au](http://www.paintandsip.com.au)**  
**Email: [chris@paintandsip.com.au](mailto:chris@paintandsip.com.au)**

## Short Story

### THE WIDOW'S MITE

Margaret Pearce

The black cat sunned himself on the fence and watched the approach of Mrs. Higgins through half closed eyes.

She paused at the letterbox to collect her mail. Her pension cheque she put straight into her bag, but she turned the other envelope over as she groped for her key. Puss waited until she went inside, and then followed down the worn linoleum of the passage to the kitchen.

"Dear me," said Mrs. Higgins.

Puss cocked a listening ear.

"Five hundred dollars, just fancy." Mrs. Higgins replaced the envelope in her bag. "Time for lunch, Puss. Just because my sister, and a flighty piece she was, leaves me five hundred dollars is no excuse for us to neglect ourselves. Do you fancy a nice piece of liver?"

Puss certainly did, and what with concentrating on lunch, the puzzling question of what to do with an expected five hundred dollars was temporarily dropped.

It was raised with unexpected persistence by her daughter Christine. She had arrived over for afternoon tea with her two toddlers.

"After all, Mum," she pointed out, grabbing at her youngest who had designs on the best teapot. "It's not as if you really want anything, and now that Christine has started ballet, some of it would pay for her costumes. It's a bit of a struggle."

Mrs. Higgins snorted. Young Christine's ballet lessons were a sore point.

"Ridiculous to waste good money on luxuries. I raised all you children and kept out of debt, and only mind you, by not frittering good money away on luxuries."

Christine's haggard face flushed. "That is why I am determined my Christine isn't going to miss out on those sort of things." "I can't see that you should reproach me for the way I brought you up." Mrs. Higgins was offended. "I did the best I could – a widow with three young children."

"Yes, Mum," Christine agreed.

She gave her mother a dutiful peck, and placing one child in the pusher started up the passageway, calling her other son from his destructive game in the flowerbed. She left behind her an atmosphere dense with resentment.

As soon as it was safe Puss jumped down from the roof, his tail still twitching.

"Never mind, Puss," Ms. Higgins consoled.

"George is dropping in tomorrow. We'll see what he thinks I should do with five hundred dollars."

Over afternoon tea, George her firstborn, a

balding middle-aged man, looked thoughtful.

"Five hundred dollars from silly old Auntie Brightie." His voice became wistful. "It would just cover a decent set of tyres for the bomb. Can't risk my Mum sitting in a car with bald tyres."

"If you can't afford to run a car you shouldn't have one. Goodness knows I never bought anything I couldn't afford when you children were young."

George's face darkened. For a fleeting second he looked like the little boy who was refused a new tyre for his bike when he got his first paper round.

"I need a car to get to work with. From where we live I'd be travelling for hours."

"I travel everywhere by train."

George gulped down his tea and looked at his watch. "Must run – I'll drop by some other time."

Mrs. Higgins decided that tomorrow she would visit her other son, her nice absentminded John. It had been months since she had seen him and his family. It was a beautiful day, but the long walk from the station had her puffing as she turned into their front gate. John was on the front lawn, covered in grease and surrounded by motor mower parts. He looked surprised when he saw her.

"Why didn't you ring from the station, Mum? I would have come down to pick you up."

Mrs. Higgins beamed. John never did pick her up when she visited, but he always scolded her for not ringing.

The rest of his family came out to greet her, so it was well into the afternoon before she got a quiet moment to tell John about her little windfall.

"Good old Auntie Brightie," he laughed.

There was a pause. "What are you going to do with it, Mum?"

"I haven't thought about it."

"If you aren't using it straight away, could you lend it to me to buy a new mower – mine's had it."

"You still have the old hand mower I gave you. It was quite good enough for your Dad and he had a bigger lawn to do than this one."

"Times change. No one cuts lawn by hand these days."

Mrs. Higgins looked at John's spreading paunch. "It seems to me it's about time you started."

John flushed and tried to pull in his stomach

"Don't bother to run me to the station – I can walk. I'm not scared of a bit of exercise, even if some people are."

She waited, but her son John remained silent.

Mrs. Higgins went home, nursed her sore feet and had another look at her cheque.

Her troubled gaze wandered over the furniture and the floor coverings.

Everything might be shabby, even her clothes, but there was still at least five years wear left in everything.

She straightened up and her jaw set firmly. She just wasn't going to give that money to her children to fribble. It took three weeks to make the important decision.

After the technician left, she sat on a chair, eyes shining and admired her new acquisition.

One cordless phone, with its attached answer phone and a brand new combined phone table and chair for it to live on. Now she could ring her children, instead of waiting for them to drop in to visit her. She had written down the phone numbers, George, Christine and John. She lifted the receiver. Her fingers hovered over the numbers. She paused.

No point in ringing George until he got over his huff. He sulked for weeks when he was denied anything.

She looked at Christine's number. Her lips thinned. If she got through to Christine that injured resentment would waft over the phone and pervade her entire house again. That left only John's number, and remembering his ready acceptance of her decision to walk to the station as he returned to tinkering with his motor mower, there didn't seem much reason to ring him either.

Mrs. Higgins replaced the handset and sat looking at it.

And in the silence of her empty house, the phone on its nice new combined table and seat flaunted its extravagant self before her. Margaret Pearce

P.O. Box 253, Belgrave, 3160

Email: [mpearceau@gmail.com](mailto:mpearceau@gmail.com)

**Bendigo Community Bank**  
**Serenade at Sunset**  
**Saturday 11th March 2017**  
5pm at the Grantville Reserve  
Bass Highway Grantville  
Tickets: \$39 Full & \$36 Conc.\*  
An evening of light Opera  
and Musical Theatre featuring  
internationally acclaimed artists  
and our 'Rising Stars'  
Quality food & fine local wines  
Ticket Sales & More Info  
facebook  
www.serenadeatsunset.com  
0402 727 364  
Wayne Moloney  
BASS COAST  
Working in Dairy Communities Program  
FRFR  
GARDINER FOUNDATION  
Genuine & Clean Community Bank  
Bendigo Bank  
\*Aged Concession Only



# Letters

## The Project has begun!

On December 18, the French View Caravan Park in Grantville hosted a BBQ and Crafty Day to begin our 2 year Arts Project called "The Edge of Us", designed to celebrate the life we live in all the coastal towns of Corinella, Coronet Bay, Grantville, Pioneer Bay and Tenby Point.

Everyone who was there was actively creating a colourful piece, learning new techniques from Jess, the visiting artist, cutting and interweaving coloured bands of film to allow the light to shine through, making cut-out scenes of beach, surf and sand, or the green rolling hills of South Gippsland where we all live...

It was a hive of enjoyable activity that afternoon and we all felt we were off to a good start towards our first event on April 8, 2017 called "Luminous Streets" Like to know more?

[www.theedgeofus.com.au](http://www.theedgeofus.com.au)

[info@theedgeofus.com.au](mailto:info@theedgeofus.com.au)

Sheila Moore, Grantville

## Corinella problem Coronet Bay Solution

I read with interest the detailed letter by Barbara Oats about the Corinella arrangements. However there was no mention of the parking problems which are already severe. Many of the Corinella problems have been caused by the closure of the extensive Coronet Bay launching facilities, the exclusion of some 450 boaties and their migration to Corinella ramps

Unhappily the developer not only closed the gate leading to the Coronet Bay facilities but welded it to railway lines. Thus condemning all those 450 boaties to increase the use of Corinella ramps. One could launch at least six boats at a time if necessary at the Coronet Bay setup. It worked well and safely for 40 years.

Until the developers wanted a development which was actually contrary to the Planning Act. ie the Sporting village. They closed the ramp in an attempt to force the Shire to agree with their plans which it could not. The Shire tried to negotiate without success. I have seen notes of meetings and it was clear that the developers were intransigent and unreasonable. But the Shire did try. The result was to the disadvantage of the boaties and over the last eight years, to the neglect of the Coronet Bay facilities and to the crowding of the Corinella ramps.

A survey I conducted indicated that over 50 boaties preferred the all tide Coronet Bay ramp facilities and only one preferred Corinella. Coronet Bay actually has a causeway with numerous entries to the Bay. Extremely convenient for us oldies. There is

a deep channel out from the causeway which can accommodate the largest boat. This is not generally known.

For forty years the boaties maintained the ramp without incident. For the last 8 years the ramps and access were uncared for and have been damaged. When there was a concerted effort to remove the licence from the developer (and this threat still exists) the developer chose to negotiate. The matter is now in the hands of the Shire. However the repairs are required on the developers land and DELWP permission is not required. I do not understand why repairs are not being carried out as storms create further damage to the weakened structures. What is the cause of the delay?

I and many others believe it would be cheaper to build an access track around the shore to the extensive coronet Bay facilities and transfer the ramp licence to the Shire than upgrade the overcrowded Corinella facilities.

Tim Ealey, Coronet Bay

## Foreshore Reserve Highlights

Welcome to the first regular update from the Corinella Foreshore Reserve Committee of Management. Foreshore Reserve Highlights provides an update on the activities and key points from Committee meetings.

### Initiatives in Progress

The Infrastructure Design Plan is in progress to secure a grant to help fund improvements to the boat ramp area.

Further community consultation sessions will be held in 2017 for the Corinella Boat Ramp Master Plan.

Several grant applications are in progress to help fund other improvements to the ramp area and other facilities around the foreshore. Updates to follow as these progress.

### Care and Maintenance of the Foreshore Reserve

**- Boat ramp/Caravan Park/Picnic facilities**  
Pot holes in the tarmac in the ramp area have now been fixed in time for summer activity. We'll soon have new picnic tables in the caravan park picnic area.

Volunteers have pitched in to spread mulch around the Rotunda area to inhibit weeds and help with moisture retention.

### Settlement Point

Weed spraying has been completed on the oval to help eradicate Wild Watsonia and blackberry, and the edge of the track has been whippet snapped.

### Western Precinct

Bass Coast Shire Council have been contacted to help stop further spread of Paterson's Curse weed in the Western Precinct.

### Northern Precinct

The track has been sprayed and the beach access points have been widened. A fallen she-oak has also been cleared from the area.

## Southern Precinct

The southern entrance to the reserve has been cleaned up all the way back to the Retarding Basin, and the edge of the track from Norseman's Road to Cuthbert Street has been mown.

## Beach Street Gully

Following contact with Bass Coast Shire Council and the Department of Environment, Land, Water and Planning, the area has been modified removing the dangerous rocks that had been imbedded in the new overflow spillway as part of the new estate works.

## Working Bee

A fantastic turnout on Sunday 27th November with 11 volunteers participating in the Working Bee. They worked for 2 hours and made excellent progress removing debris, litter and weeds.

Barbara Oates

## Fire Restrictions

The Country Fire Authority (CFA) introduced the Fire Danger Period for the Bass Coast Shire on Monday, December 19. CFA Group Officer for Bass Coast, Damien O'Connor, said the Fire Danger Period is when CFA restricts the use of fire in the community.

These restrictions will be in place until May 1, 2017 unless revoked or varied.

Community members are encouraged to look at the CFA information sheet, 'Can I or Can't I?', or the CFA website:

[www.cfa.vic.gov.au/warnings-restrictions/can/](http://www.cfa.vic.gov.au/warnings-restrictions/can/) for answers to commonly asked questions about lighting fires during the Fire Danger Period and on Total Fire Ban Days. Bass Coast Shire Council's General Manager David Elder, said the CFA information sheet highlights that some councils have local law conditions on the use of incinerators.

"In Bass Coast, incinerator fires are not permitted in residential areas at any time,"

"We can't stress enough that lives and property are put at risk when people do not comply with fire restrictions and regulations."

"Yes, you can have a barbecue or light your pizza oven during the Fire Danger Period – unless it's a declared Total Fire Ban Day – it's just that there are conditions in place to keep us all safe,"

**If you want further information on the Fire Danger Period call the VicEmergency Hotline on 1800 226 226 or visit <http://emergency.vic.gov.au/prepare/>.**

Information on local laws across the Shire are available online from:

<http://www.basscoast.vic.gov.au/locallaws>



# Greg Hunt says



**Greg Hunt MP**  
**Federal Member for Flinders**  
**Minister for Industry, Innovation & Science.**

I hope that all of the Waterline community had a safe and joyful Christmas and New Year period. It is a wonderful opportunity for all of us to spend quality time with our friends and family, whilst re-charging our batteries for the year ahead. Summer is my favourite season of the year and I am privileged to represent a region that encompasses some of the best coastal environments in the country.

It is also a time when some of my favourite events occur throughout the Waterline and Bass Coast community.

Each year it's great to be involved in the San Remo Channel Challenge and Cowes Classic that bring competitors from far and wide. I fear that my training for the events will not be enough to stop the young whipper-snappers streaming past me on the way to the finish line.

Also coming up is the annual Tooradin Tractor Pull which always attracts a big crowd. I am sure that my kids will enjoy watching the variety of car and truck events throughout the day's festivities.

On a serious note, the summer period also presents challenges within our community with the ever present risk of bushfire.

It is important that we all have fire-ready action plans organised in the unlikely event of bushfire.

I would like to thank the CFA brigades across the Waterline communities that work

hard to keep us safe this summer. In closing I would like to wish everyone a prosperous 2017 and I look forward to continuing our work for the community.

**If I can be of assistance to you in any way please feel free to contact me:**

**4/184 Salmon Street (PO Box 274)**

**Hastings 3915**

**Email: [greg.hunt.mp@aph.gov.au](mailto:greg.hunt.mp@aph.gov.au)**

**Tel: (03) 5979 3188**

**Website: [www.greghunt.com.au](http://www.greghunt.com.au)**

*Greg Hunt*

## PICNIC RACING TIME



**2016-17 Calendar**

**Saturday January 21**

**Saturday February 4 (Cup)**

**Saturday February 25**

**Saturday March 18**

**Greg Hunt**  
**FEDERAL MEMBER**  
**For FLINDERS**

**Phone:**

**(03) 5979 3188**

**Email:**

**[greg.hunt.mp@aph.gov.au](mailto:greg.hunt.mp@aph.gov.au)**

**Website:**

**[www.greghunt.com.au](http://www.greghunt.com.au)**

**Working together**



*- getting results*

## Bendigo Community Bank Serenade at Sunset



The Bass Valley Music Festival Inc. welcomes back Bendigo Community Bank as its new major sponsor for Serenade at Sunset which returns to Grantville Recreation Reserve on Saturday March 11, 2017

Watch this space, check our website ([www.serenadeatsunset.com](http://www.serenadeatsunset.com)) & facebook page for further updates.

The Waterline News will have a special feature on Bendigo Community Bank Serenade at Sunset in the February edition.

Jean Coffey

**BJ's Mowing & Garden Maintenance**  
**Call now 0414 463 395**

**\* For all your lawn & gardening needs**



- \* Mowing & ride on work
- \* Friendly prompt service
- \* Obligation free quotes
- \* Competitive rates
- \* Fully Insured
- \* Servicing all areas from Grantville, Corinella and Coronet Bay to San Remo & Phillip Island

**BASS COAST**  
**STOCKFEEDS**

**Bass Coast Stock Feeds**  
**& Pet Supplies**

**Something for every pet or farm animal,**  
**furry or feathered**

**Shop 1&2 Grantville Drive Grantville**  
**5678 8933 - 0430 537 392**

**K9 Pawfection**

**Dog Wash, Grooming**  
**& Clipping Service**

**Coronet Bay**

**Available by Appointment**

**Phone Sandra on**

**0413 209 709**





# Sports & Leisure

**CORINELLA BOWLING CLUB Inc. 2016/17 SEASON**  
**22 Balcombe St Corinella.**  
**T: 5678 0497.**



Follow & Like us on our Facebook page - Corinella Bowling Club on Westernport or search for [www.facebook.com/CBC.Westernport](http://www.facebook.com/CBC.Westernport)  
Corinella Bowling Club Summer season has started now.

**Contact Jacquie Carter – 5678 0596**  
**Enid Johnston – 5678 0118**

## FISHING with Craig Edmonds



After the season we have had so far I guess the weather of the last few weeks or so is almost expected. It has made it difficult at times to get the boats out and a little wet and windy on the land based areas as well. The reports have reflected the inconsistent weather but when things were right good catches were reported. Despite the winds often being the wrong direction for the tides those who took advantage of the opportunities when they presented themselves managed some quality fish and even the odd bag of fish.

With two islands, there is usually somewhere that is sheltered that you can launch the boat to have a fish or a land based spot out of the wind, the rain is a different problem obviously but it still won't affect the fish only the angler. That has been the case over the last few weeks and if you are prepared to drive a few miles to have a fish you have a similar situation further down the coast around Wilsons Prom and Port Albert areas. It is usually as simple as working out the effect wind and tide has on each other as well as onshore and offshore winds in different areas. Wind with tide will generally be calmer than wind against tide, just remember at some stage the tide will change and onshore winds will generally be rougher than offshore winds, just factor in the tide as well and while it may sound complicated simply look at the map of the area you are in and the wind, tide directions and you will be able to work it out. Failing all of that of course check in with the local tackle shop for advise.

Much of the wind over the last couple of weeks has been northerly making it offshore and plenty have been out chasing flathead and some of the bigger species caught in the deeper water. Flathead have been very good and have been found in several different depths. They aren't in large schools and seem to be the same as they have been for

the last few years with smaller schools a few hundred metres apart. If you are going to give fishing offshore a try, make sure one of the first things you purchase is a sea anchor. I find if you purchase a sea anchor that is one size bigger than recommended for your boat it will have a much better effect of slowing you down than a smaller one. Use your sea anchor to help you drift in the direction you want to go simply by changing the place it is tied onto your boat, doing this you can keep your lines directly behind you making fishing much easier.

The flathead have been reported from 25m off the glasshouse to 65m off the cape and are a good mixture of tigers and sandys. If conditions are right you will also be able to get a good bag of pinkies on the close hard bottom areas east of Kilcunda near the wind mills, but you will catch and throw back several undersized in between your keepers. In the same areas, you need to put down a big bait on a bigger rod for a gummy or school shark. If you are going to target a gummy offshore take your time getting there throw out a couple of lures and pick up a couta or salmon for some fresh bait. If you are going to trawl around for a salmon, blind or working a school of fish and using a deeper diving type lure don't rig it on a light outfit because we are coming into Kingfish time and you will often find them swimming with the salmon. If you want to fish light for salmon find a school of fish and cast small metal slugs, white the best, into them and keep it on the surface. There have been reports of whiting from a lot of different spots as there always is around Christmas with so many people unfamiliar to the area they often stop and fish in areas regular people wouldn't. The size of whiting is very mixed now and several undersized to several over 45cm reported, the best 55cm. We have had reports from almost all the usual spots making it difficult to work out the exact spot to go. The best advice I can give is early morning and somewhere quiet is the best spot to be. We have had some reports from the land as well and while we never see bags of fish caught land based they are usually good quality. Newhaven jetty, Rhyll jetty and low tide at Sunderland Bay.

Almost all the snapper we are seeing in the bay now are only pinkies and that very small annoying bait thief type. We did see a small handful of good snapper to 5kg but very random catches.



## 'Don't Risk the Rip',

In a bid to combat the ongoing issue of drowning deaths along the Australian coastline, Surf Life Saving Australia has launched a sobering safety campaign highlighting the serious dangers of rip currents – and according to figures, it's young men who are most at risk of losing their lives.

'The Facts about Rip Currents' campaign will bust some common myths associated with beach safety and will run across national television, radio, newspapers, outdoor, online and mobile media ahead of summer.

### According to research:

Only 15 per cent of people who drown in rips are international visitors  
Young men aged 15-39 years are most likely to get caught and drown in rips  
Two out of three people who think they can identify a rip, can't  
Rips are the number one danger swimmers face when enjoying a day at the beach and surprisingly, more people drown in rips each year, than deaths from shark attacks, floods and cyclones combined.

"All too often young men have an attitude of over-confidence and run into the waves before checking to see what the ocean conditions are doing," Mr Daw said.

"They get into trouble because they either haven't checked for rips, can't identify a rip and underestimate the strength of these currents, they swim after patrols finish or at unpatrolled beaches."

With this in mind, Mr Daw advised it's really important that people know what to do if they find themselves caught in a rip. There are three options:

Raise an arm and call out for help, or Float with the current, it may return you to a shallow sandbank, or

Swim parallel to the beach or towards the breaking waves, you may return to shore If what you're doing isn't working, re-assess the situation and try one of the other options.

Surf Life Saving Australia's clear message this summer is 'Don't Risk the Rip', a message echoed by Bass Coast Shire Council Mayor, Cr Pamela Rothfield.

"We had many tragedies on beaches in Bass Coast over the past year, and we don't want to see anymore lives lost. "I can't emphasise strongly enough how important it is to never swim in dangerous conditions, no matter how strong a swimmer you may be, and to always have someone looking out for you – never swim in the ocean alone," Cr Rothfield said.

"If in doubt, ask a surf lifesaver about an alternative place to swim and, where possible, swim at a patrolled beach between the red and yellow flags."



# Gardening & Outdoors

## UNDERSTANDING YOUR GARDEN

James Middleton

### Buying Gardening Tools - Part 2



## Secateurs

### 3 kinds of secateurs

When it comes to gardening you really won't get far without a good pair of

secateurs. But what makes secateurs good? What should you look for when you are shopping for secateurs? One thing many gardeners don't know is that there are actually three different kinds of secateurs: Anvil, Bypass and Parrot Beak.

Very quickly, Anvil secateurs have an upper blade that pushes down onto a flat lower anvil. Parrot Beak secateurs have two blades which cut by meeting together in the middle and look like a parrot's beak. The third kind of secateurs are called Bypass secateurs. They work by having two blades which bypass each other in a similar way to scissors. The big difference between Bypass and Parrot Beak secateurs is the shape of the blades: Parrot Beak having two identical blades compared to Bypass which has one large and one small blade, the large blade being convex in shape and the small blade being concave in shape. Bypass secateurs are the main type used and sold



in Australia and will be the focus of this entry.

### What to look for in a pair of secateurs

When buying secateurs there are a few things to consider. One of the most important things to check out is how they feel in your hand. When you are out shopping, pick up a few pairs and see how they feel. Feel for weight and feel for grip. Most secateurs handles will be shaped with little divots for your fingers to go in, find the pair with divots that best fit your hand.

Another key tip is to make sure the secateurs you are keen on have a safety latch that is easily engaged and disengaged with one hand. When you are pruning a plant, if you have to stop and use two hands to engage the safety latch, it is more likely that you won't use it at all. It might sound simple but a safety latch is only useful if it is likely to be put to use. Try and look for secateurs with plastic covered metal handles. Metal handles are strong but are cold to work with while plastic handles are a sign of cheap manufacturing and are not likely to last as well as metal handles. There are also a growing number of carbon fibre handles now and these are fantastic.

There are three different blade types: stainless steel, coated steel, and carbon steel.

My preference is for stainless steel but carbon steel works well too. Either of these kinds will stay the sharpest for longer periods of time. The only real upside to coated steel is that it cleans more easily. Cleaning your secateurs after use is extremely important but having blades that remain sharp are better for the job at hand. The general rule of thumb with



secateurs is: don't try cutting plant limbs that are thicker than your thumb. If you try and cut limbs that are too thick you will damage the blade and therefore your tool that you have invested in will not last as well for as long. The best tool for limbs thicker than your thumb is a lopper.

### Cost of secateurs

Prices range from \$5-\$10 at the cheap end right up to \$150-\$200. Again for a household gardener I'd say you could probably get a pair that will work for \$20-\$40 but a good pair at around \$50 may well last you a decade or more. My Grandma had a pair that I know was much older than I was when I was 10.

Next Month: Loppers



<http://aussiegreenthumb.com/>

**Got a problem with a snake?**

**Call D.E.L.W.P 136 186**

**Or: Barry Goldsmith**

**0408 067 062**



- Excavations site cuts
- House and shed site cuts drainage and trenching
- Posthole boring
- Laser levelling cut & fill
- Footings and foundations
- Dam construction and repairs

- Landscaping
- Horse arenas preparation & construction
- Supply of quarry products from sand to rocks
- Truck hire
- Traxcavator hire
- Site clean ups and slab preparation
- Fill material can be supplied or removed
- Posthole boring
- Clearing
- Swimming pools
- Retaining walls

- Tree clearing and removal
- Animal burial
- Bobcat hire
- Excavator hire
- Fully insured licensed operators
- No job too big or too small

**FOR A FREE QUOTE  
RING TERRY NOW  
0499 222 232**



**We pride ourselves on customer satisfaction at budget price**

[www.southerncrossearthworks.com.au](http://www.southerncrossearthworks.com.au)



# Self Sufficiency



## 8 unusually great uses for Windex

Melody The



It's the glass cleaner that's been taking the world by storm ever since it was introduced in the 1930s. But as it turns out, Windex does much more than keep windows streak-free. Here's a few other ways you can use it.

### 1. Banish laundry stains

Got a tough stain on your shirt? Windex surprisingly makes a great substitute stain-remover (as long as you're not spraying on delicate fabrics). Spray uncoloured version of Windex on stain and let sit for 15 minutes. Blot with clean cloth, rinse with cold water and wash as recommended.

### 2. Get rid of grease

Windex works a treat as a degreaser, helping to soften up the build-up of grease. It's great for those hard-to-clean places like oven, rangehood, kitchen fans, or even pots and pans. Spray liberally and let stand for 10 minutes, then wipe. Make sure you thoroughly rinse with water to eliminate any residue.

### 3. Clean microfibre upholstery

Synthetic microfibre upholstery can be difficult to clean – even plain, old water can leave spots! To clean upholstery lightly spritz Windex and gently brush with soft-

bristled brush, working in the same direction.

### 4. Polish up jewellery

Get your jewellery sparkling with a little Windex. Spray, scrub lightly with an old toothbrush. And rinse with cold water. Make sure you don't use Windex on items that should not be cleaned with alcohol or ammonia as Windex contains both.

### 5. Freshen outdoor furniture

Windex cleans all types of outdoor patio furniture, including aluminium, resin, plastic and glass (of course).

### 6. Zap pesky insect

The window cleaner works as both an insect repellent and killer as most insects dislike the scent of ammonia. Keep some handy in summer to keep bugs at bay.

### 7. Wash your car

As it's non-greasy, Windex is good choice for cleaning the insides of your car from the windows, dashboards, steering wheel and upholstery.

### 8. Keep counters spotless

The solvent is great to clean countertop surfaces – including granite, marble, and laminate surfaces – and best of all, it won't erode or damage grout.

## 10 life lessons from Confucius

Georgia Dixon



For 2,500 years, Chinese teacher, philosopher and politician Confucius has been a source of inspiration for people around the world seeking guidance and meaning in their lives. His philosophical movement, Confucianism, emphasises

morality, honesty, the importance of social relationships and the belief that man is fundamentally good and capable of changing, evolving and improving. Here are 10 lessons we can all learn from one of China's most iconic historical figures.

- **Go beyond the surface.** "Everything has its beauty, but not everyone sees it."
- **Never give up.** "It does not matter how slowly you go as long as you do not stop."
- **Failure isn't the end.** "Our greatest glory is not in never falling, but in rising every time we fall."
- **Always challenge yourself.** "Never form a friendship with a man who is not better than you."
- **Follow your dreams, no matter what it takes.** "When it is obvious that goals cannot be reached, don't adjust the goals, but adjust the action steps."
- **Everyone has wisdom to share.** "If I am walking with two other men, each of them will serve as my teacher. I will pick out the good points of the one and imitate them and the bad points of the other and correct them in myself."
- **Always take the high road.** "If they spit at you behind your back, it means you're ahead of them."
- **Embrace getting older.** "Old age, believe me, is a good and pleasant thing. It is true you are gently shouldered off the stage, but then you are given such a comfortable front stall as spectator."
- **Never do anything half-heartedly.** "Wherever you go, go with all your heart."
- **If you have nothing nice to say, say nothing at all.** "Silence is a true friend who never betrays."

**OVER60SIXTY**

<http://www.oversixty.com.au/>

**TONY SMITH**  
**Corinella**  
**0487 457 163**



- Active Home and Commercial Cleaning
  - Specialising in Rental Property's
  - Steam Cleaning of Carpets
  - Car Interiors
  - All general needs
  - Prompt and reliable
- CALL TONY NOW**



**Contact**  
**Jamie**  
**the**  
**TV Guy**  
**8.00am**  
**To**  
**8.00pm**  
**On**

**0418 504 488**

**Cr Clare Le Serve**  
**Western Port Ward**



**M: 0448 083 286**  
**T: 03 5678 0669**

**clare.leserve@basscoast.vic.gov.au**  
**www.basscoast.vic.gov.au**

**Bass Coast Shire Council Office**  
**76 McBride Avenue, Wonthaggi 3995**  
**T: 1300 226 278**



# Advertisers Index

## JANUARY ADVERTISERS INDEX

Advertiser	Page
Access Consciousness - The Bars	5
Alex Scott Real Estate - Grantville	2
AP Progressive Plumbing	2
Bass Coast Health - Playgroup	5
Bass Coast Stockfeeds	30
Bass Concreting & Excavation	25
Bassine Specialty Cheeses (Farm Shop)	11
Bass Valley Handyman - Scott Longden	21
B.J's Mowing & Garden Maintenance	30
Burgess Motors - Grantville	25
Chase Computers	16
Cut n Edge Lawn & Garden	34
Evans Petroleum	24
Family Violence Support - Victorian Government	35
Fast Fit Car Care & Exhaust	25
Fire Ready - emergency.vic.gov.au	36
Flyaway Screens	22
Freedom Organics San Remo	13
Focus on Lifestyle - Mobility Aids	12
Grantville Medical Centre	12
Grantville Mitre 10 - Hardware	16
Happenin' Hair & Beauty - Grantville	13
Hunt, Greg - Federal MP for Flinders	30
Intimo Stylist, Michele Fulwell	5
James McConvill & Associates - Legal	35
Jim's Bait & Tackle San Remo	31
Kernot Food & Wine Store	11
Kirra Moon-Curry, Travel Managers	13
K9 Pawfection - Dog Grooming	30
Le Serve, Clare - Local Ward Councillor	33
Lang Lang Community Family Medicine	12
Lang Lang Funeral Services	1
Massage Therapist - Nici Marshall	12
Minuteman Press - Printers	5
New Era Management (YBS Coaching)	13
Nurse Practitioner - Deb Garvey	12
Over 60 Travel Insurance	11
Oz Cats Boarding Cattery - The Gurdies	21
Paint & Sip - Art Classes	27
Partylite & Candles Accessories - Vicki Thurgood	26
Paynter, Brian - State MP Bass	17
Reiki Practitioner - , Kathryn McKean	5
Right Choice Mortgage & Leasing	17
Rustic Cacao Factory & Café	24
Safflower Chinese Medicine	2
Sanders, Russell Contractor & Block Slashing	25 & 34
Scooterin About - Mobility Scooters	13
Simply Edited - Proof reader & Editor	34
Smith, Tony - Commercial & General Cleaning	33
Southern Cross Earthworks	32
Stockdale & Leggo (Judith Wright) Cows	15
Stockdale & Leggo -Grantville & Koo Wee Rup	36
Sunscape Electrical - Solar installations	2
TV Guy - Antenna Installation Specialists	33
Van Steensels Timber & Hardware	20
Veterinary Clinics - Inverloch, San Remo & Wonthaggi	22
Vinyl Layer - Ivan Meddings	1
Wings & Fins Restaurant	16



**Cut n Edge  
Lawn and Garden**

**Samantha White**  
0422 332 792

445 Korrine rd  
Glen Alvie 3979

ABN: 88 774 766 036

**Cut n Edge Lawn and Garden**

- Catcher mower and/or ride on mower
- Whipper snipping
- Maintaining gardens, weeding, trimming, planting, mulching ect
- Weed removal in lawns either by hand or chemical spray
- Great affordable rates and service with a smile
- Public liability insurance

**Make your business easy to find - Advertise in the next issue  
of The Waterline News.**

[editor@waterlinenews.com.au](mailto:editor@waterlinenews.com.au)

**RUSSELL SANDERS**  
**Contractor - 0418 549 499**

**4WD Backhoe & Tipper  
Slasher Hire  
Blocks Slashed or cleared  
Driveways built or repaired  
Site cuts and excavations  
Hydraulic grader blade**

**643 Densley Road Woolamai 3995**  
**Phone: 5678 2373**  
**Email: russellsandersbackhoehire@gmail.com**




**Simply Edited**

**Elizabeth Gilmore**  
Professional Proofreader and Editor  
[www.simplyedited.com.au](http://www.simplyedited.com.au)

0448 804 285 [www.facebook.com/SimplyEdited](https://www.facebook.com/SimplyEdited)  
[simplyedited@outlook.com.au](mailto:simplyedited@outlook.com.au) ABN: 71 921 016 929

Have your words stand out for all the right reasons. Whether it's a business document or a resume, a blog or a short story, Simply Edited will provide the right service for you. Let's get rid of those grammatical errors and spelling mistakes together. Call or email for a free quote.





**THERE'S NOTHING GOOD ABOUT  
DADS WHO ABUSE WOMEN.**

You might think you're a good dad, that you spend quality time with your kids and are a good role model. But if you are abusive in your relationship, in any form, you're not a good role model. You're harming your partner, and you're harming your children.

**For help, or someone to talk to, go to**  
[vic.gov.au/familyviolencesupport](http://vic.gov.au/familyviolencesupport)

**RESPECT  
WOMEN**

**FOR OUR  
CHILDREN'S  
FUTURE**

**VICTORIA**  
State  
Government



**JAMES McCONVILL & ASSOCIATES**  
BARRISTERS & SOLICITORS

Personal legal service  
covering **Bass Coast** and **Phillip Island**

For an initial free consultation contact

**Maka Atanasov**

lawyer

**Ph: 0423 323 659**

We can visit your home, or another convenient location.

[www.basscoastlawyers.com.au](http://www.basscoastlawyers.com.au)

# Prepare for grassfire

**THE REASONS ARE BLACK AND WHITE**



If you live in a suburb near grasslands, you're at risk of fire. If you live directly next to parks or paddocks and a grassfire starts, walk at least two streets back. If you live two or more streets away, stay where you are, grassfires are unlikely to spread into built up areas. Stay alert and monitor conditions. Don't drive, visibility may be poor, accidents are likely, and you could block emergency services.

**[emergency.vic.gov.au](http://emergency.vic.gov.au)**

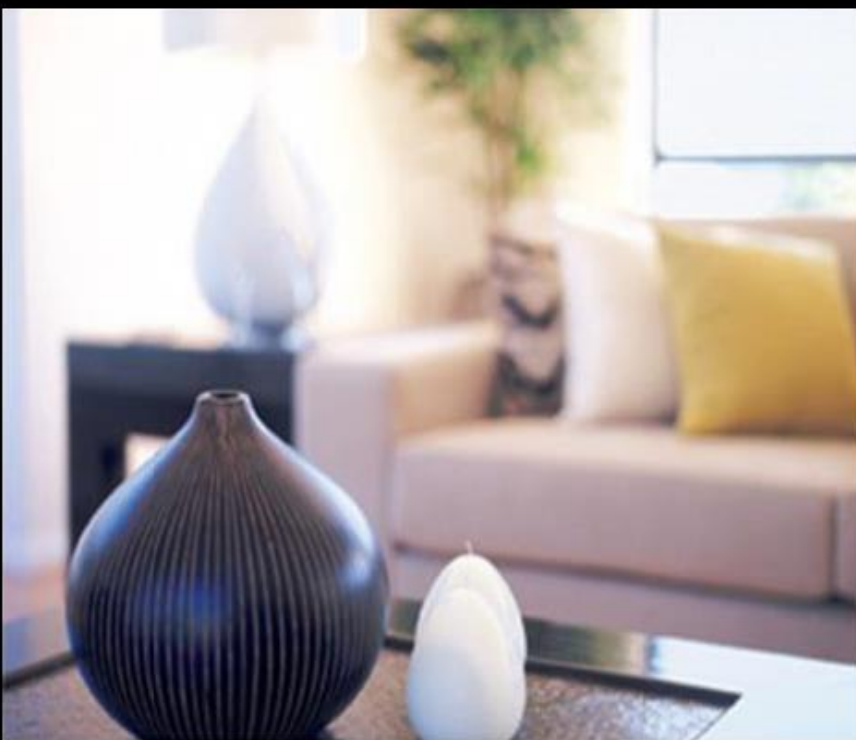
Download the VicEmergency app



Authorised by the Victorian Government,  
1 Treasury Place, Melbourne



**Get thousands more for your home  
- without spending thousands**



**Stockdale  
& Leggo**

**real  
estate**

**Talk to one of our  
Agents today and  
see what we can do  
for you.**

**Stockdale & Leggo  
Koo Wee Rup  
5997 1899**

**Stockdale & Leggo  
Grantville  
5678 8700**